

EMPIRE EAST HIGHLAND CITY

ARCADIA SITE DEVELOPMENT PLAN

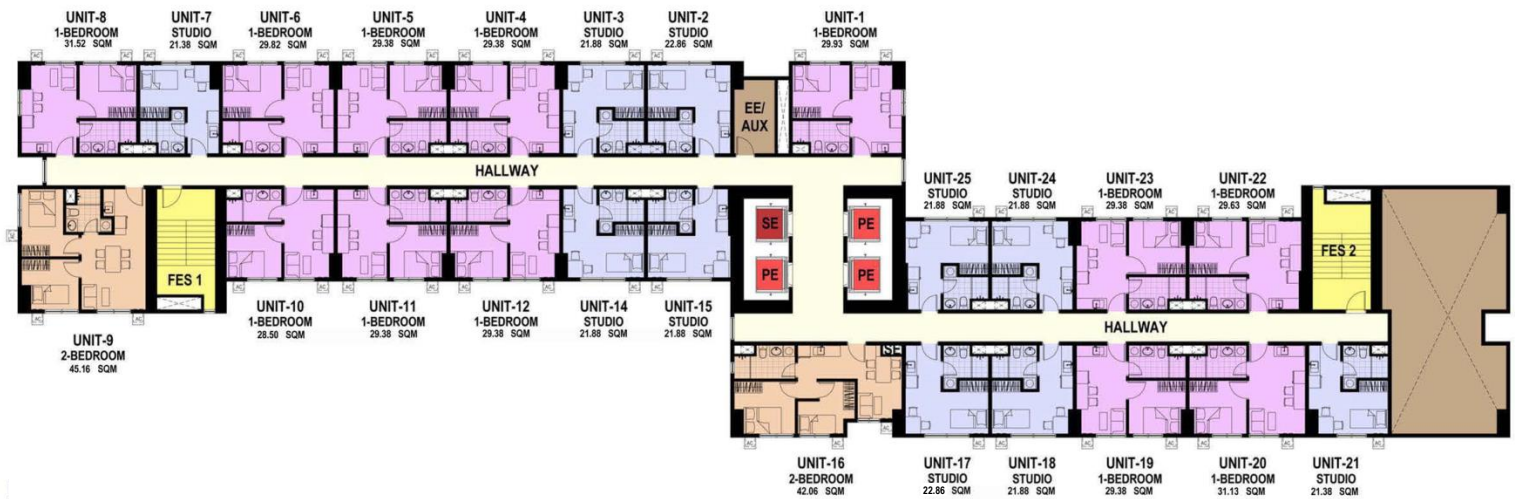


These renderings are based on the architect's perspective and do not form part of an offer or contract. Selling price is established principally on a per unit basis and not on the unit measurement or dimension. Empire East reserves the right to modify these illustrations without prior notice. Clients are invited to verify subsequent changes. As of January 2022. For reference and presentation purposes only.

EMPIRE EAST HIGHLAND CITY

ARCADIA : TOWER 3 FLOOR PLAN

FACING TOWER 2



FACING TOWER 4



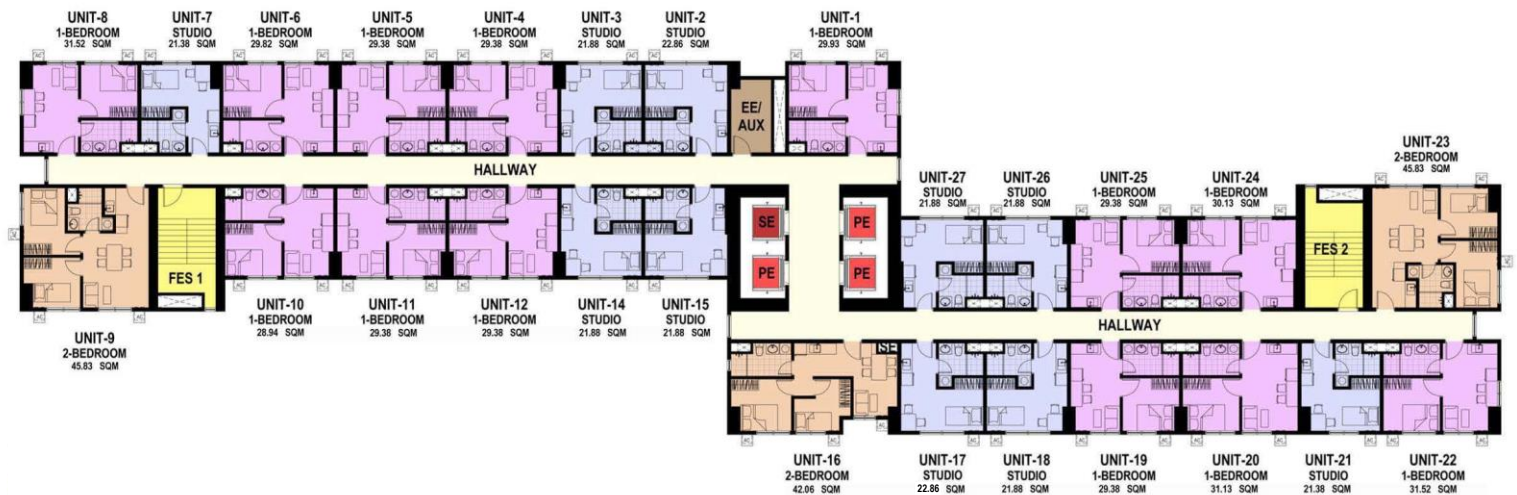
2nd Level

These renderings are based on the architect's perspective and do not form part of an offer or contract. Selling price is established principally on a per unit basis and not on the unit measurement or dimension. Empire East reserves the right to modify these illustrations without prior notice. Clients are invited to verify subsequent changes. As of January 2022. For reference and presentation purposes only.

EMPIRE EAST HIGHLAND CITY

ARCADIA : TOWER 3 FLOOR PLAN

FACING TOWER 2



FACING TOWER 4



3rd to 6th Level

These renderings are based on the architect's perspective and do not form part of an offer or contract. Selling price is established principally on a per unit basis and not on the unit measurement or dimension. Empire East reserves the right to modify these illustrations without prior notice. Clients are invited to verify subsequent changes. As of January 2022. For reference and presentation purposes only.

These renderings are based on the architect's perspective and do not form part of an offer or contract. Selling price is established principally on a per unit basis and not on the unit measurement or dimension. Empire East reserves the right to modify these illustrations without prior notice. Clients are invited to verify subsequent changes. As of January 2022. For reference and presentation purposes only.

EMPIRE EAST HIGHLAND CITY

ARCADIA : TOWER 3 FLOOR PLAN

FACING TOWER 2



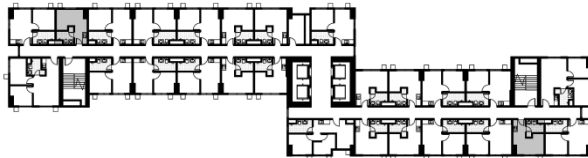
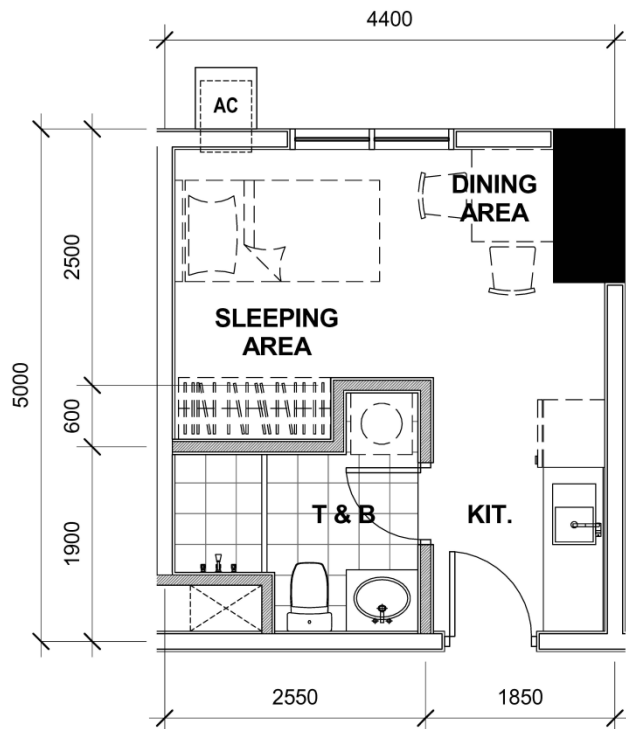
FACING TOWER 4



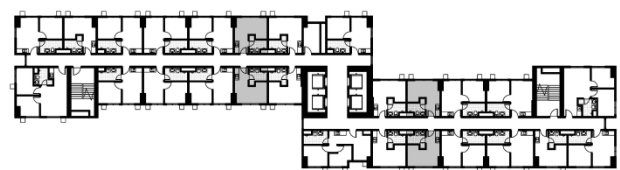
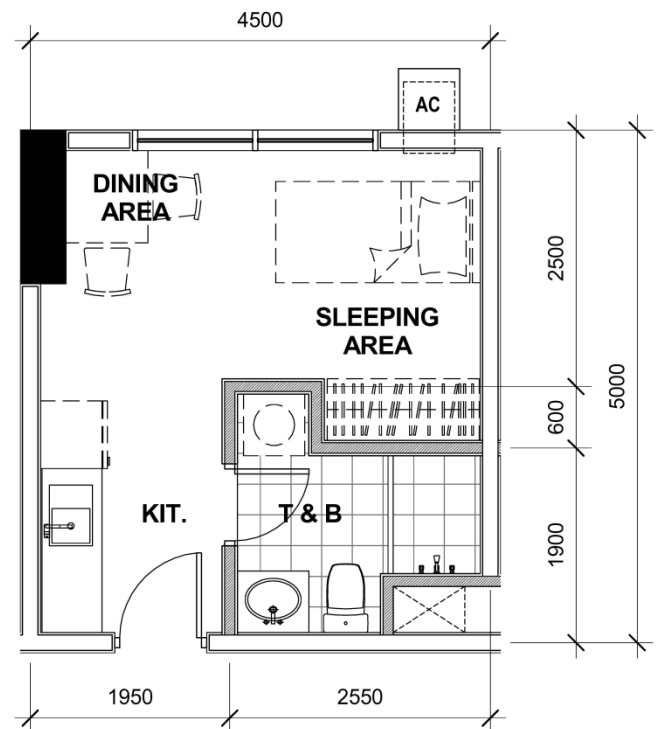
10th and 21st Level

EMPIRE EAST HIGHLAND CITY

ARCADIA : TOWER 3 - UNIT LAYOUT TYPICAL STUDIO UNITS



21.38 SQM
2nd to 37th Level
Unit 7, 21



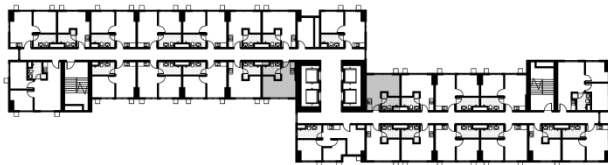
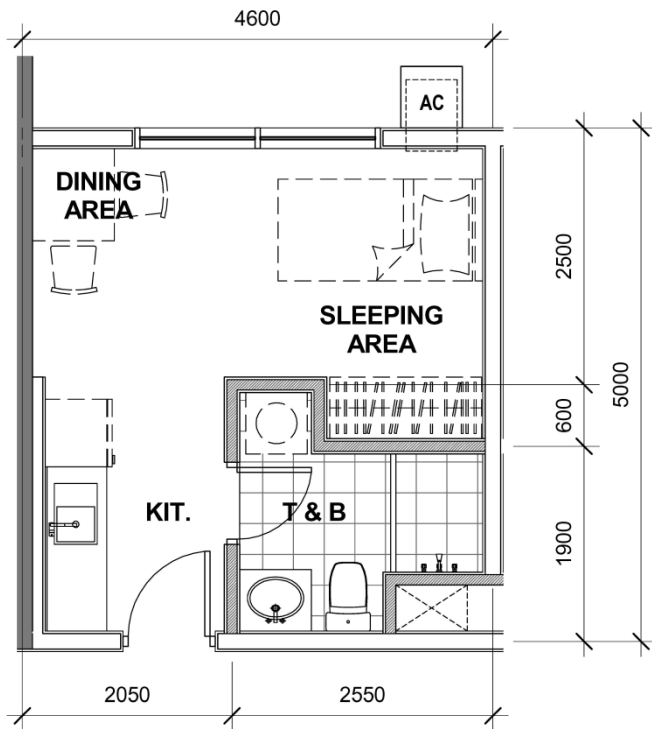
21.88 SQM
2nd to 37th Level
Unit 3, 14, 18

2nd Level
Unit 24

3rd to 37th Level
Unit 26

EMPIRE EAST HIGHLAND CITY

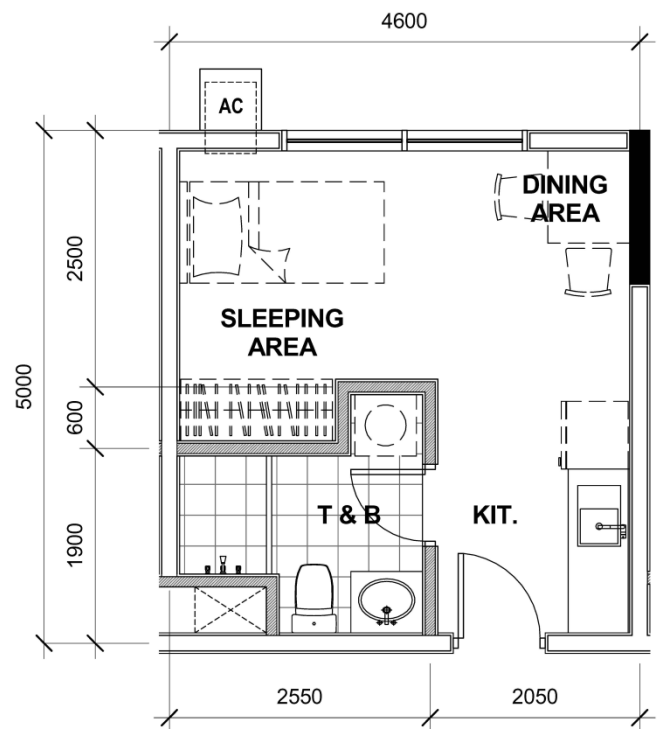
ARCADIA : TOWER 3 - UNIT LAYOUT TYPICAL STUDIO UNITS



21.88 SQM
2nd to 37th Level
Unit 15

2nd Level
Unit 25

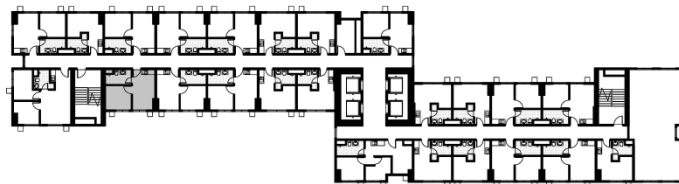
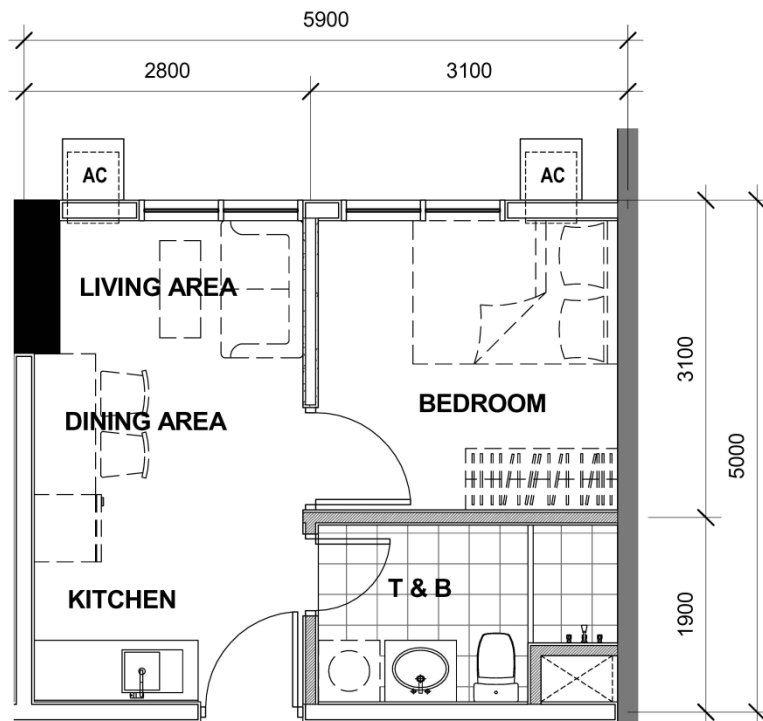
3rd to 37th Level
Unit 27



22.86 SQM
2nd to 37th Level
Unit 2, 17

EMPIRE EAST HIGHLAND CITY

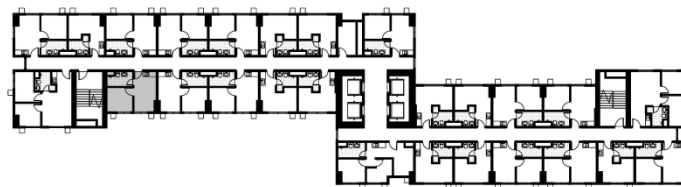
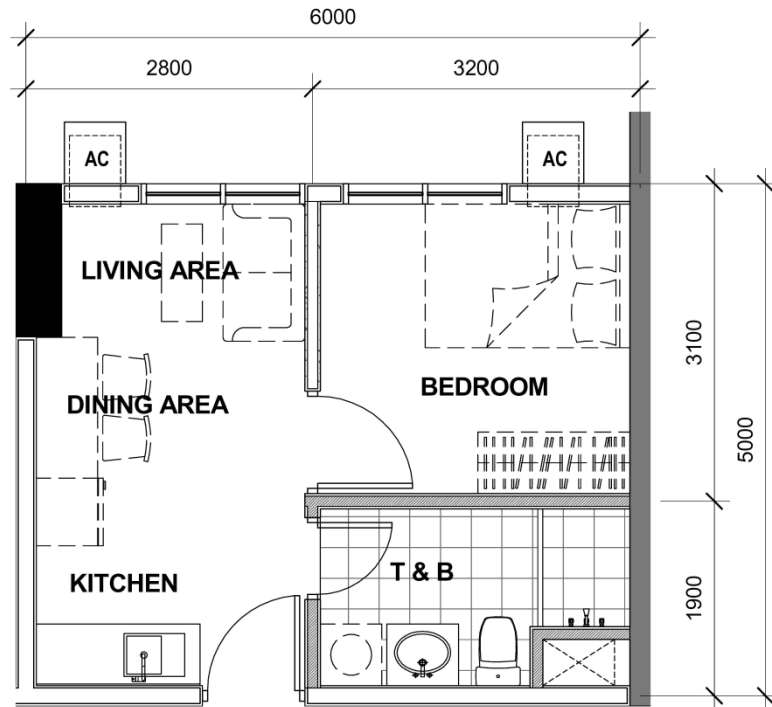
ARCADIA : TOWER 3 - UNIT LAYOUT TYPICAL ONE BEDROOM UNIT



28.50 SQM
2nd Level
Unit 10

EMPIRE EAST HIGHLAND CITY

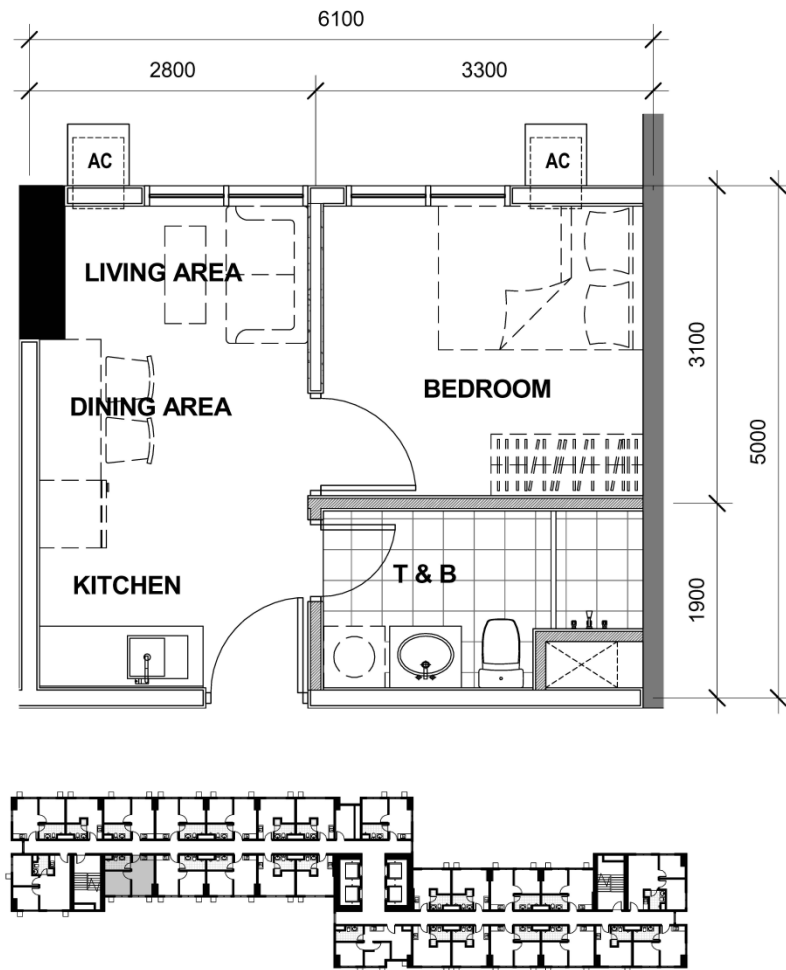
ARCADIA : TOWER 3 - UNIT LAYOUT TYPICAL ONE BEDROOM UNIT



28.94 SQM
3rd to 6th Level
Unit 10

EMPIRE EAST HIGHLAND CITY

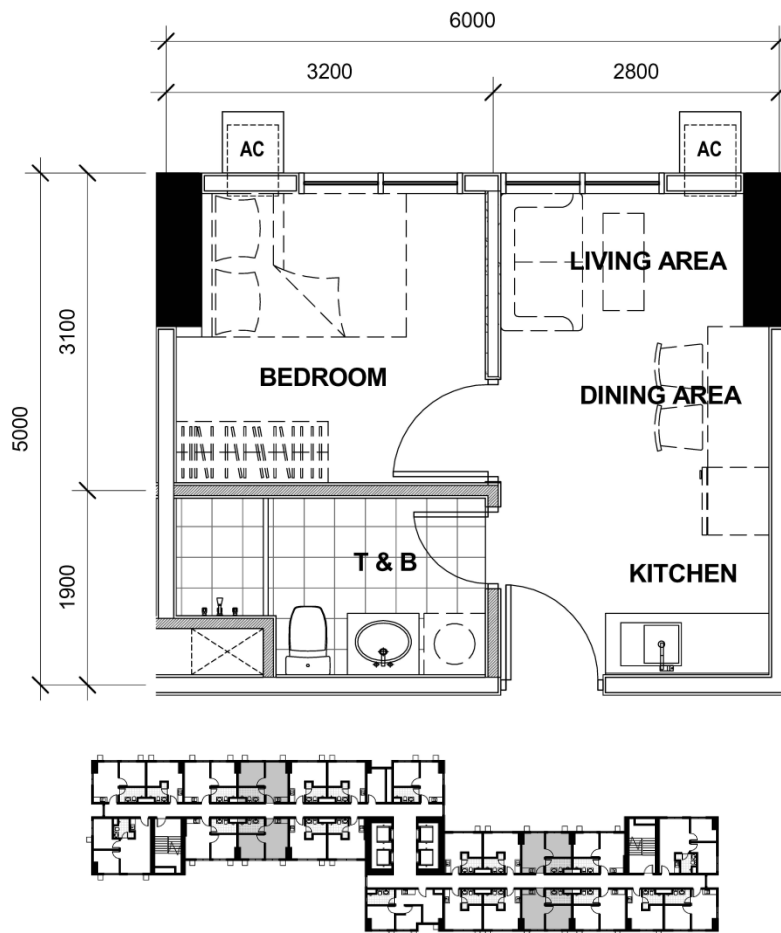
ARCADIA : TOWER 3 - UNIT LAYOUT TYPICAL ONE BEDROOM UNIT



29.38 SQM
7th to 37th Level
Unit 10

EMPIRE EAST HIGHLAND CITY

ARCADIA : TOWER 3 - UNIT LAYOUT TYPICAL ONE BEDROOM UNIT



29.38 SQM

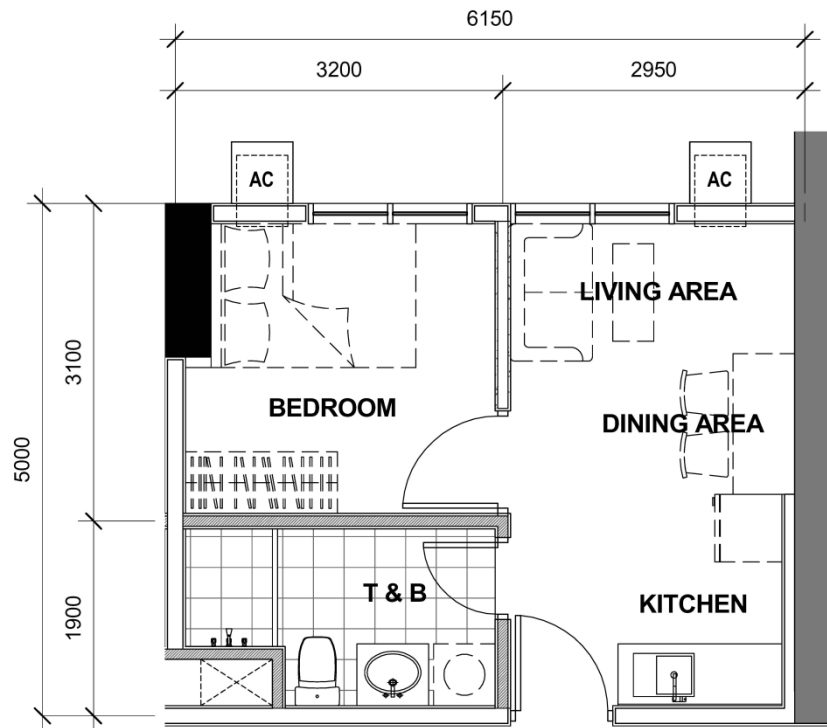
2nd Level
Unit 23

3rd to 37th Level
Unit 25

2nd to 37th Level
Unit 4, 5, 11, 12, 19

EMPIRE EAST HIGHLAND CITY

ARCADIA : TOWER 3 - UNIT LAYOUT TYPICAL ONE BEDROOM UNIT



29.63 SQM
2nd Level
Unit 22

EMPIRE EAST HIGHLAND CITY

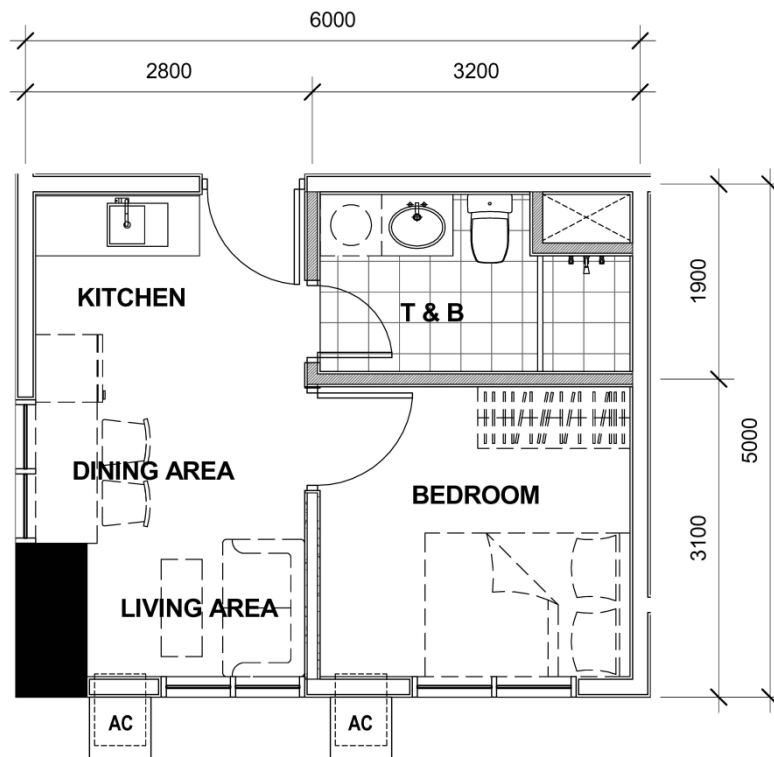
ARCADIA : TOWER 3 - UNIT LAYOUT TYPICAL ONE BEDROOM UNIT



29.82 SQM
2nd to 37th Level
Unit 6

EMPIRE EAST HIGHLAND CITY

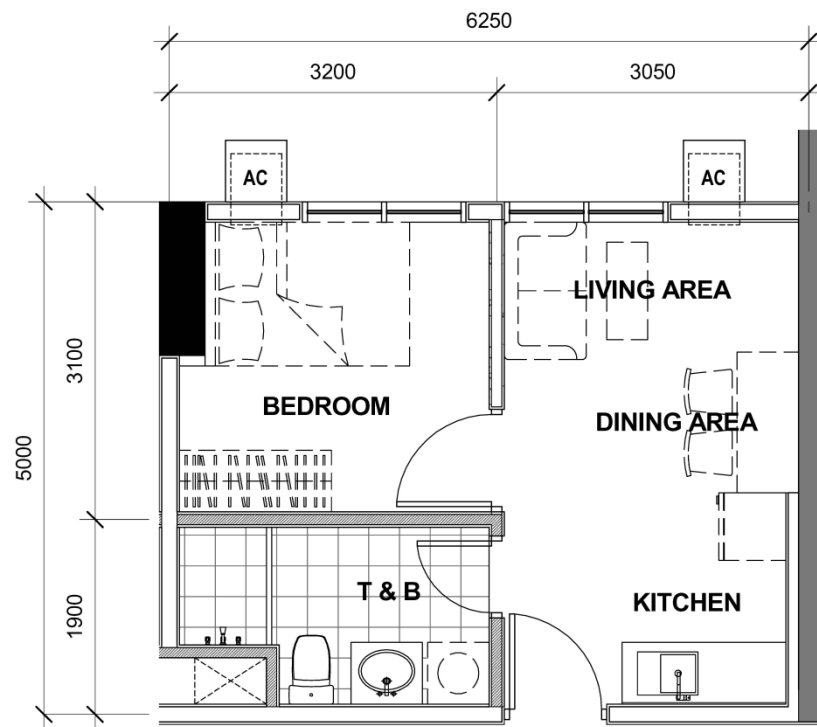
ARCADIA : TOWER 3 - UNIT LAYOUT TYPICAL ONE BEDROOM UNIT



29.93 SQM
2nd to 37th Level
Unit 1

EMPIRE EAST HIGHLAND CITY

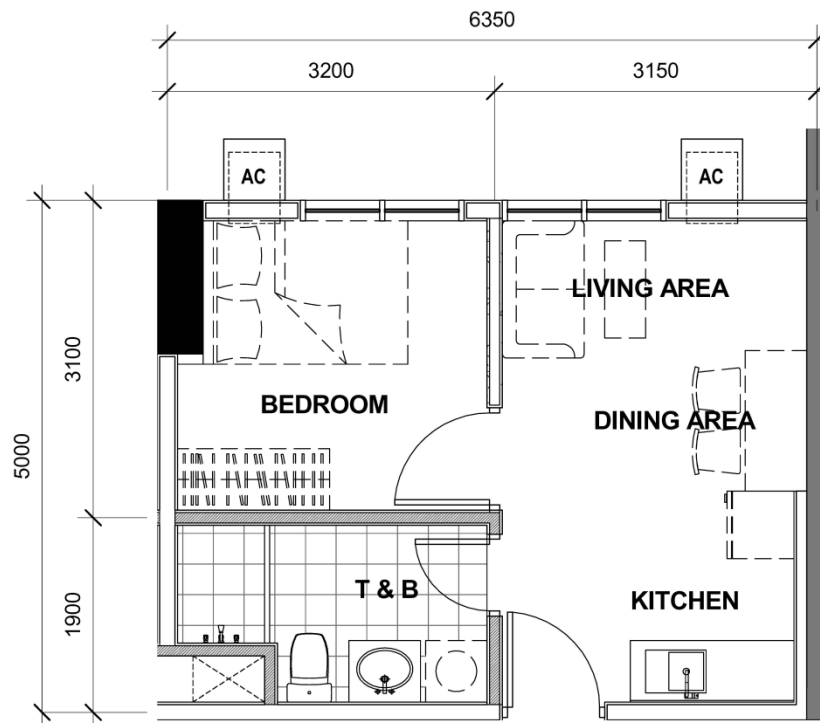
ARCADIA : TOWER 3 - UNIT LAYOUT TYPICAL ONE BEDROOM UNIT



30.13 SQM
3rd to 6th Level
Unit 24

EMPIRE EAST HIGHLAND CITY

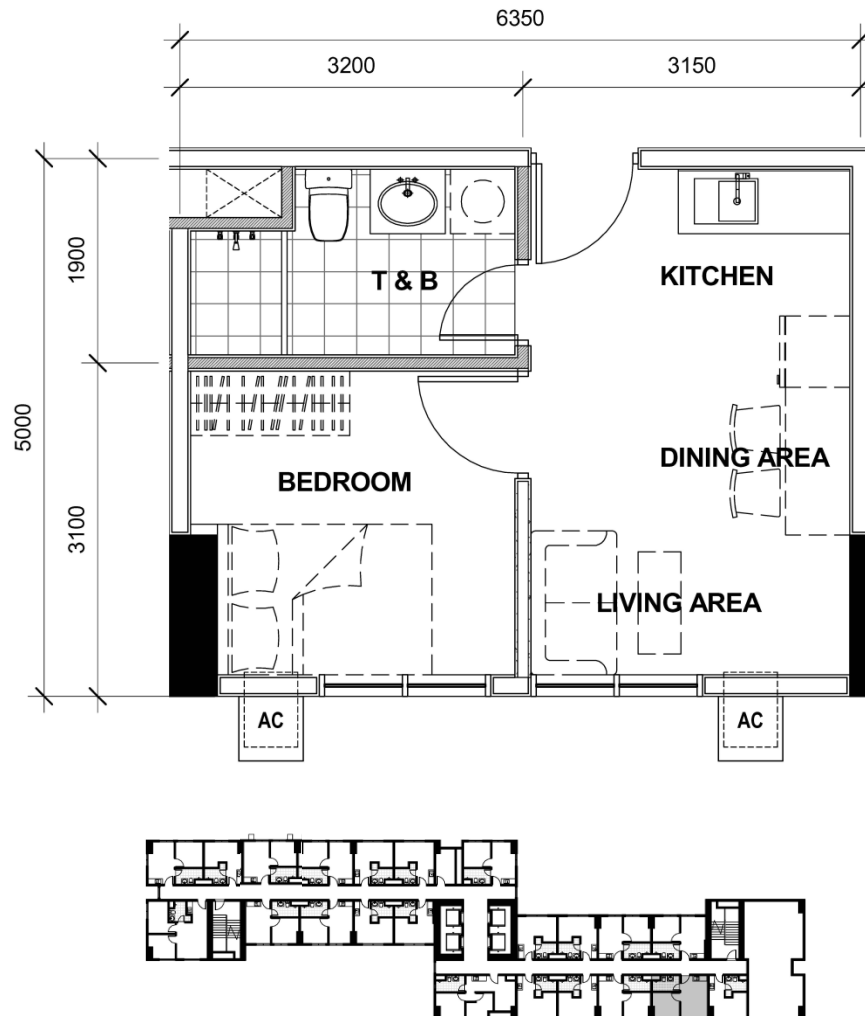
ARCADIA : TOWER 3 - UNIT LAYOUT TYPICAL ONE BEDROOM UNIT



30.63 SQM
7th to 37th Level
Unit 24

EMPIRE EAST HIGHLAND CITY

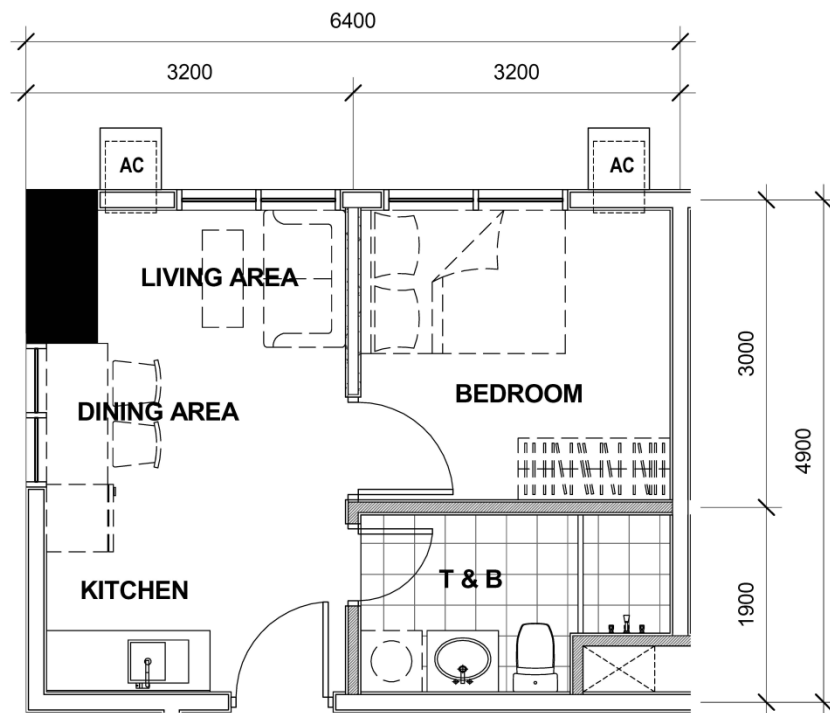
ARCADIA : TOWER 3 - UNIT LAYOUT TYPICAL ONE BEDROOM UNIT



31.13 SQM
2nd to 37th Level
Unit 20

EMPIRE EAST HIGHLAND CITY

ARCADIA : TOWER 3 - UNIT LAYOUT TYPICAL ONE BEDROOM UNIT

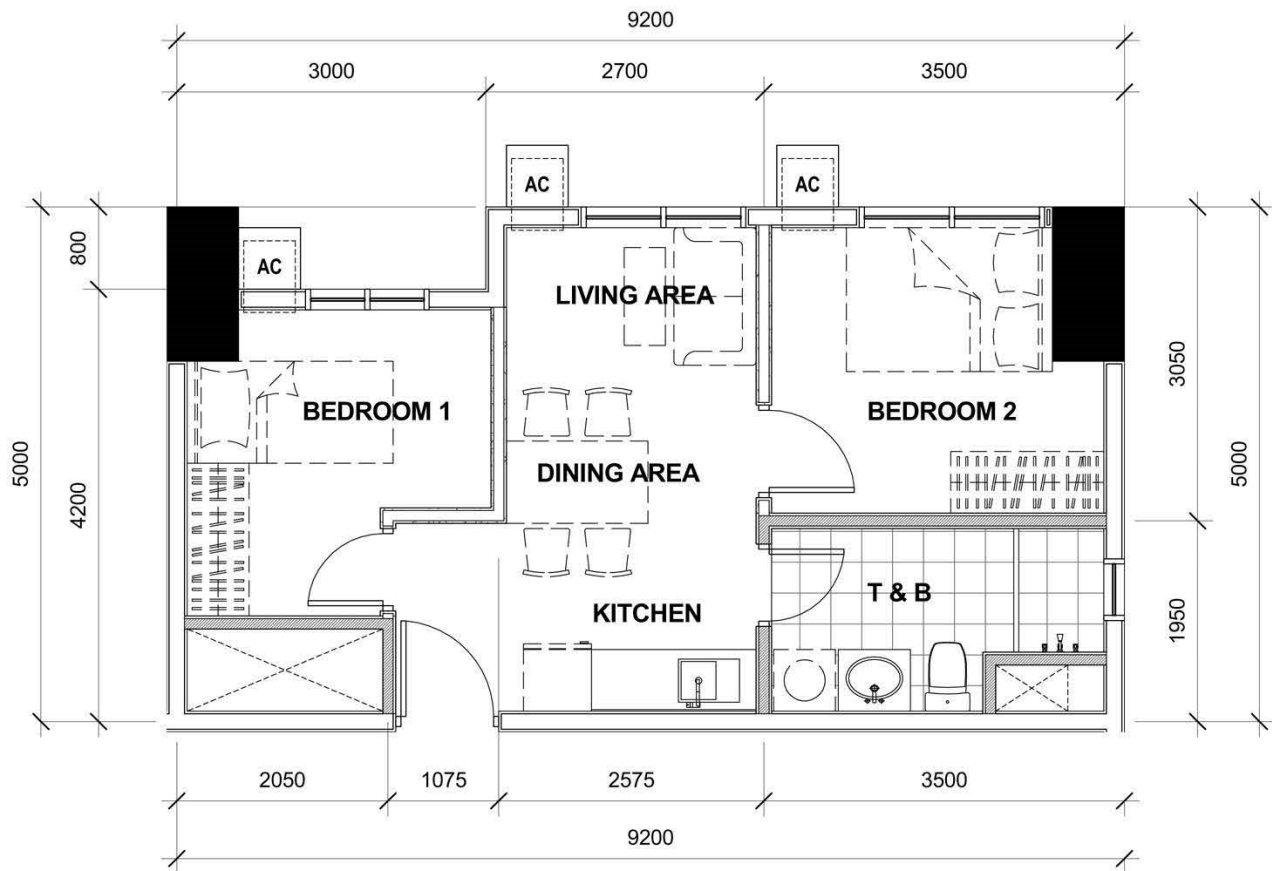


31.52 SQM
2nd to 37th Level
Unit 8

3rd to 37th Level
Unit 22

EMPIRE EAST HIGHLAND CITY

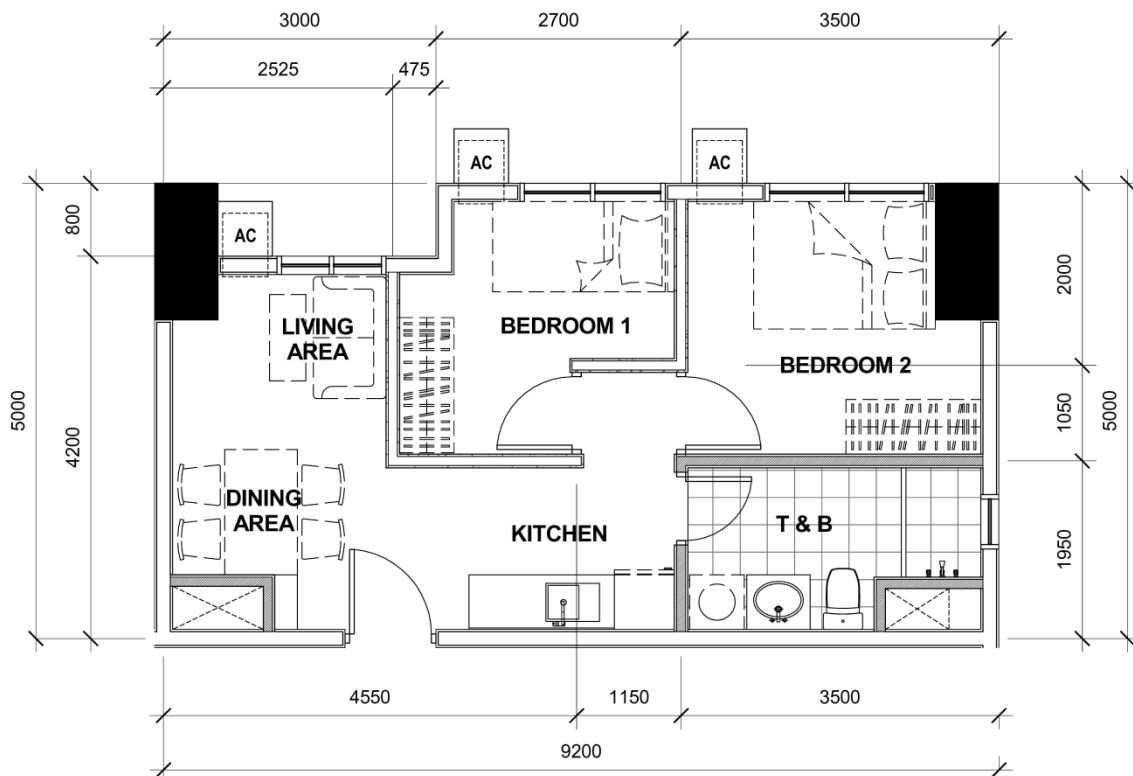
ARCADIA : TOWER 3 - UNIT LAYOUT TYPICAL TWO BEDROOM UNIT



40.81 SQM
10th and 21st Level
Unit 16

EMPIRE EAST HIGHLAND CITY

ARCADIA : TOWER 3 - UNIT LAYOUT TYPICAL TWO BEDROOM UNIT

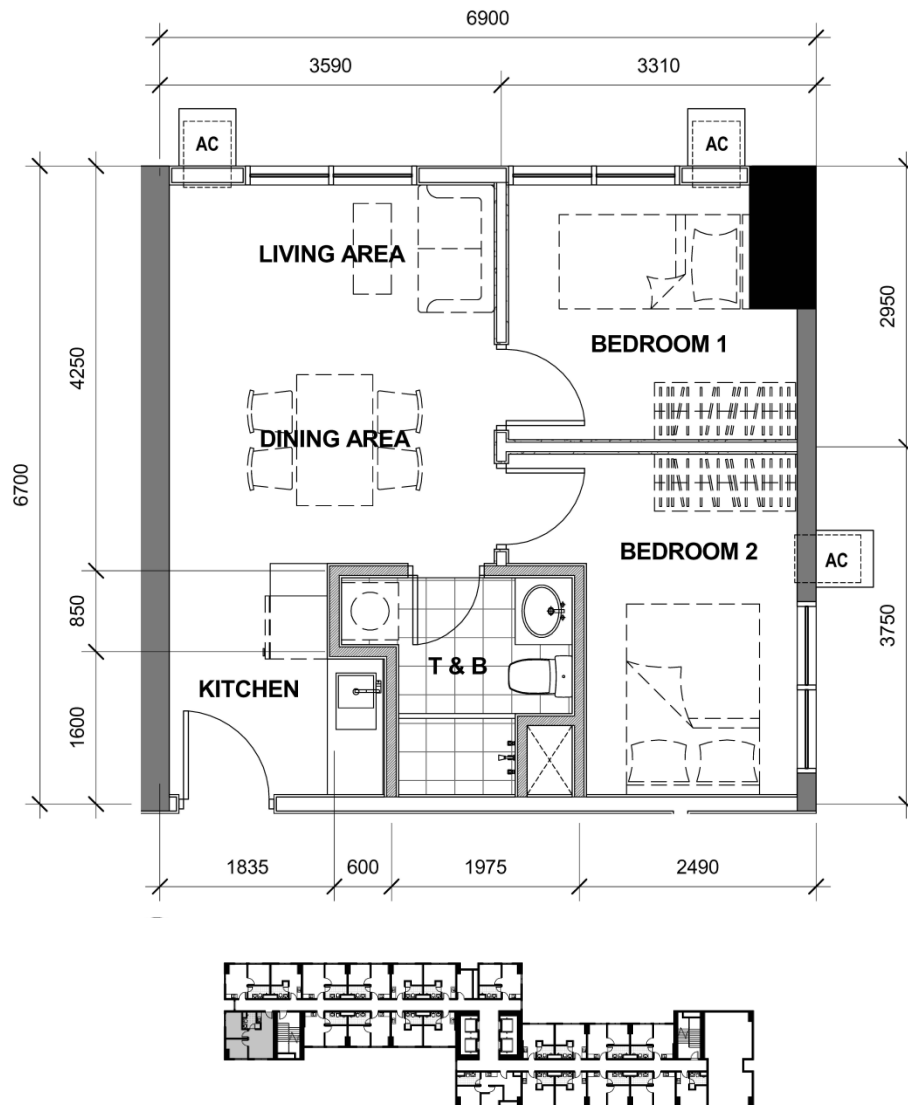


42.06 SQM
2nd to 37th Level
(except 10th and 21st level)
Unit 16

These renderings are based on the architect's perspective and do not form part of an offer or contract. Selling price is established principally on a per unit basis and not on the unit measurement or dimension. Empire East reserves the right to modify these illustrations without prior notice. Clients are invited to verify subsequent changes. As of January 2022. For reference and presentation purposes only.

EMPIRE EAST HIGHLAND CITY

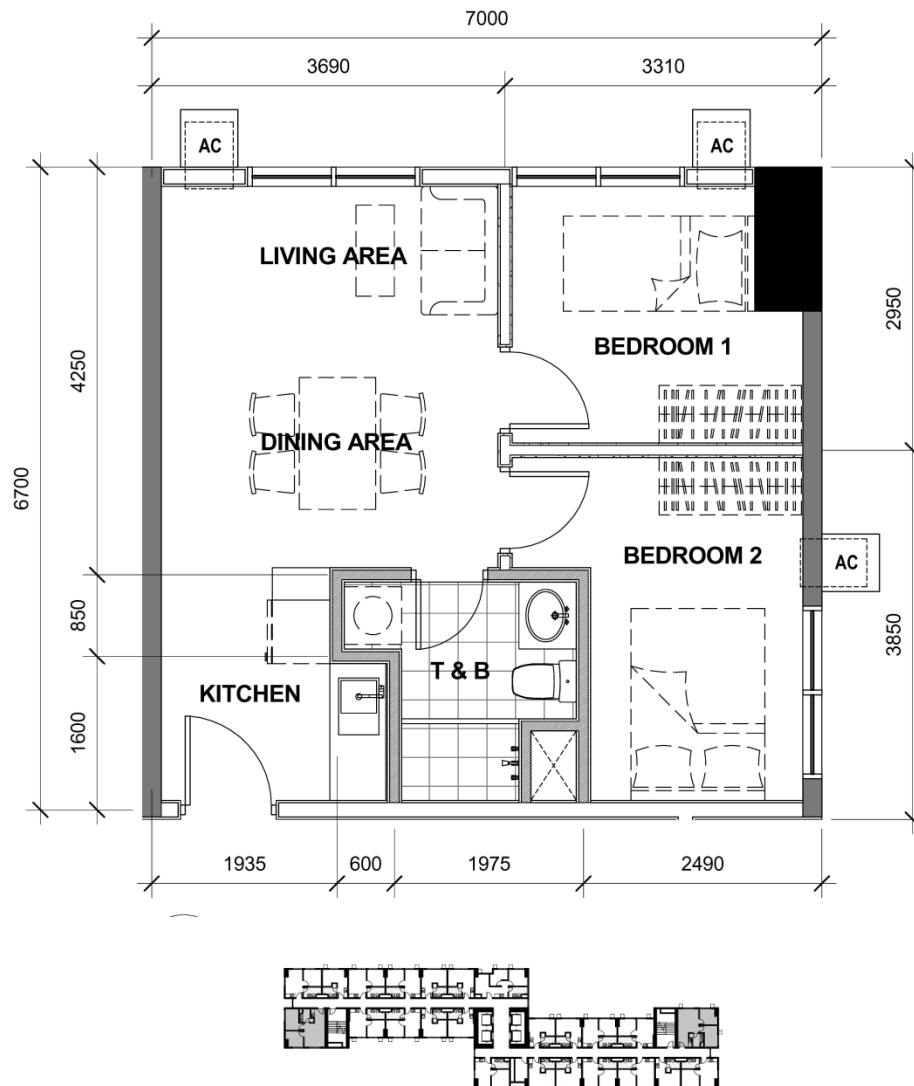
ARCADIA : TOWER 3 - UNIT LAYOUT TYPICAL TWO BEDROOM UNIT



45.16 SQM
2nd Level
Unit 9

EMPIRE EAST HIGHLAND CITY

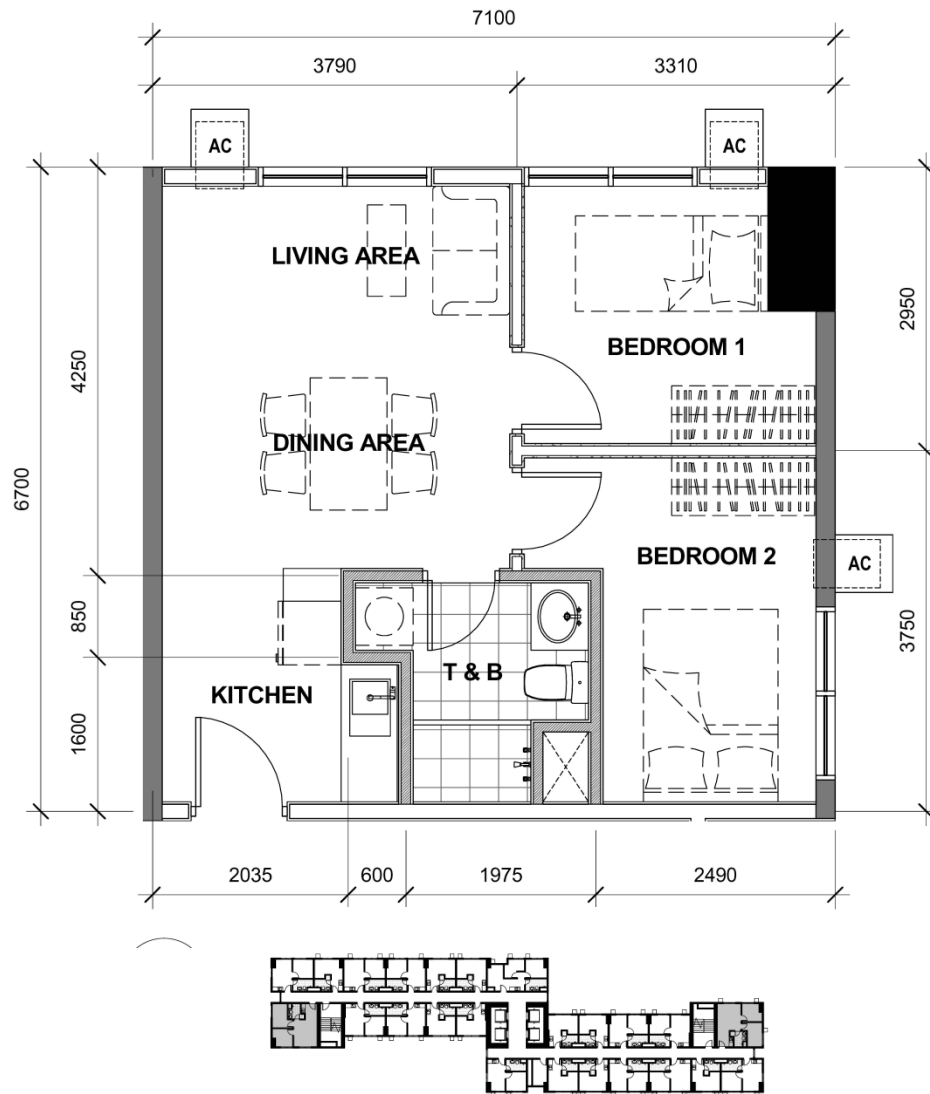
ARCADIA : TOWER 3 - UNIT LAYOUT TYPICAL TWO BEDROOM UNIT



45.83 SQM
3rd to 6th Level
Unit 9, 23

EMPIRE EAST HIGHLAND CITY

ARCADIA : TOWER 3 - UNIT LAYOUT TYPICAL TWO BEDROOM UNIT



46.50 SQM
7th to 37th Level
Unit 9, 23

These renderings are based on the architect's perspective and do not form part of an offer or contract. Selling price is established principally on a per unit basis and not on the unit measurement or dimension. Empire East reserves the right to modify these illustrations without prior notice. Clients are invited to verify subsequent changes. As of January 2022. For reference and presentation purposes only.