

# EMPIRE EAST HIGHLAND CITY

## ARCADIA SITE DEVELOPMENT PLAN



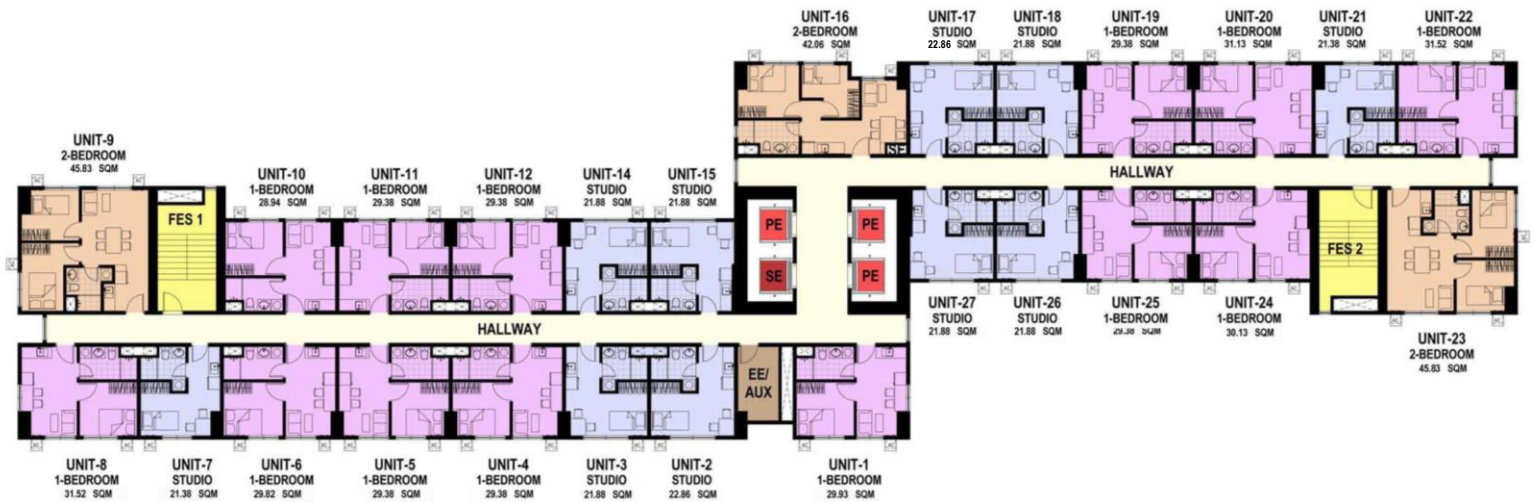
These renderings are based on the architect's perspective and do not form part of an offer or contract. Selling price is established principally on a per unit basis and not on the unit measurement or dimension. Empire East reserves the right to modify these illustrations without prior notice. Clients are invited to verify subsequent changes. As of August 2022. For reference and presentation purposes only.

These renderings are based on the architect's perspective and do not form part of an offer or contract. Selling price is established principally on a per unit basis and not on the unit measurement or dimension. Empire East reserves the right to modify these illustrations without prior notice. Clients are invited to verify subsequent changes. As of August 2022. For reference and presentation purposes only.

# EMPIRE EAST HIGHLAND CITY

## ARCADIA : TOWER 4 FLOOR PLAN

FACING TOWER 3



FACING CLUSTER 2



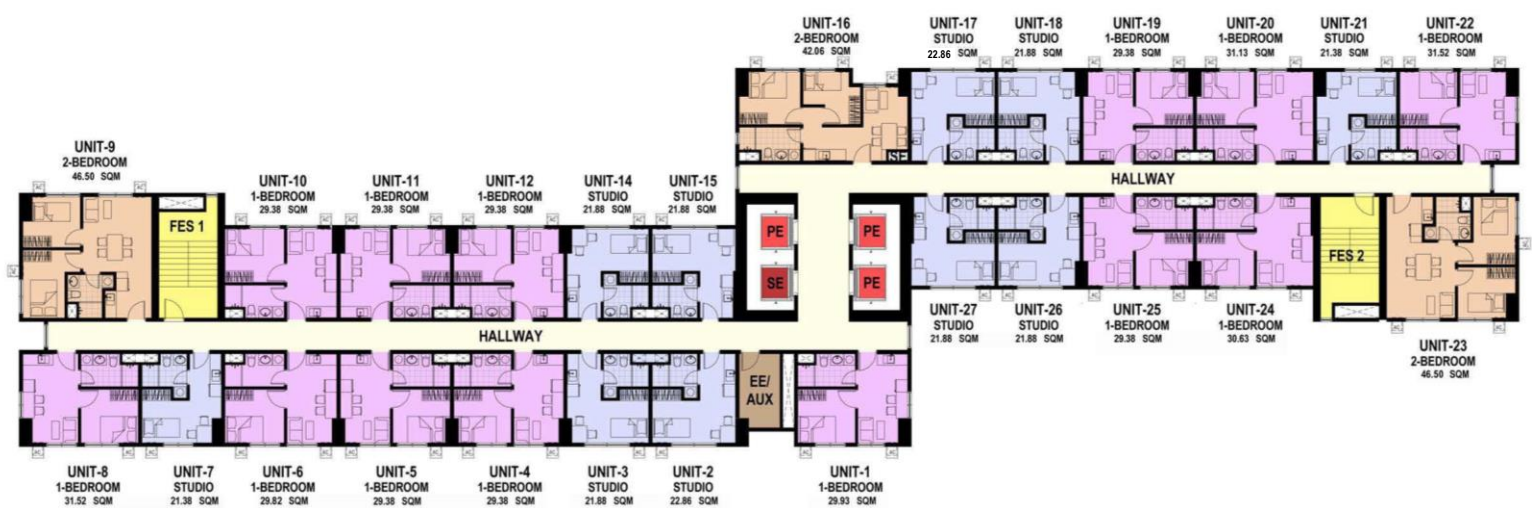
3<sup>rd</sup> to 6<sup>th</sup> Level



# EMPIRE EAST HIGHLAND CITY

## ARCADIA : TOWER 4 FLOOR PLAN

FACING TOWER 3



FACING CLUSTER 2



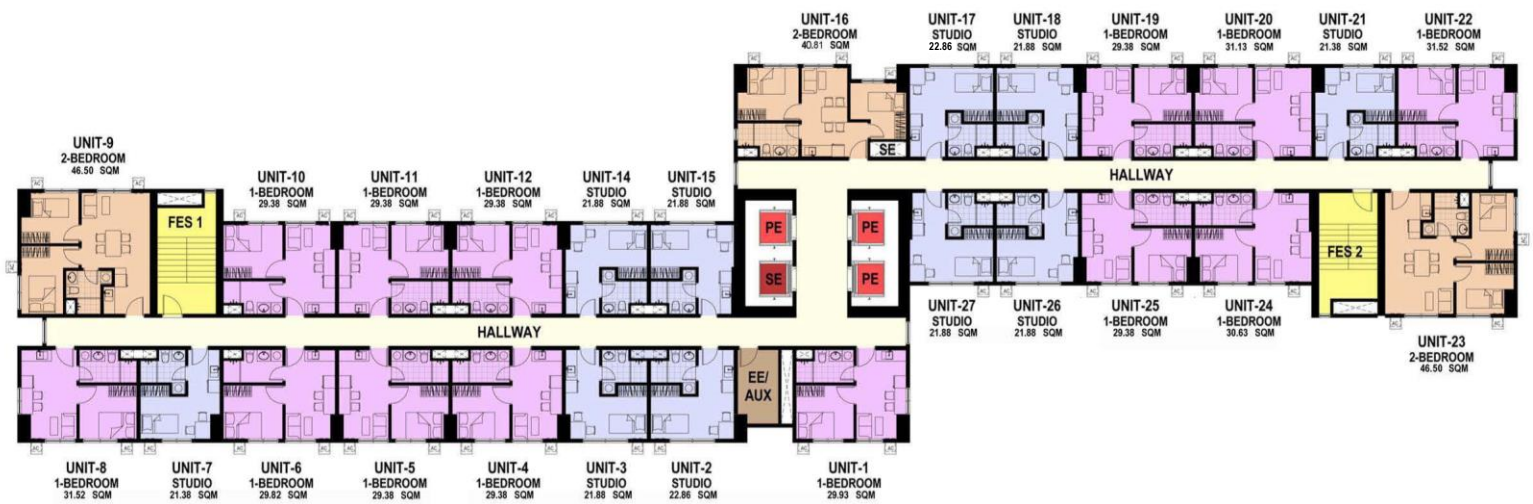
**7<sup>th</sup> to 9<sup>th</sup> Level**  
**11<sup>th</sup> to 20<sup>th</sup> Level**  
**22<sup>nd</sup> to 37<sup>th</sup> Level**

These renderings are based on the architect's perspective and do not form part of an offer or contract. Selling price is established principally on a per unit basis and not on the unit measurement or dimension. Empire East reserves the right to modify these illustrations without prior notice. Clients are invited to verify subsequent changes. As of August 2022. For reference and presentation purposes only.

# EMPIRE EAST HIGHLAND CITY

## ARCADIA : TOWER 4 FLOOR PLAN

FACING TOWER 3



FACING CLUSTER 2

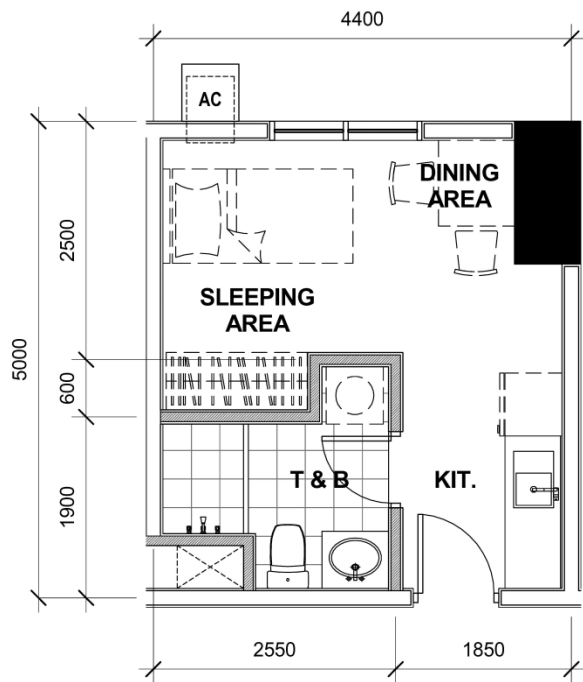


10<sup>th</sup> Level  
21<sup>st</sup> Level

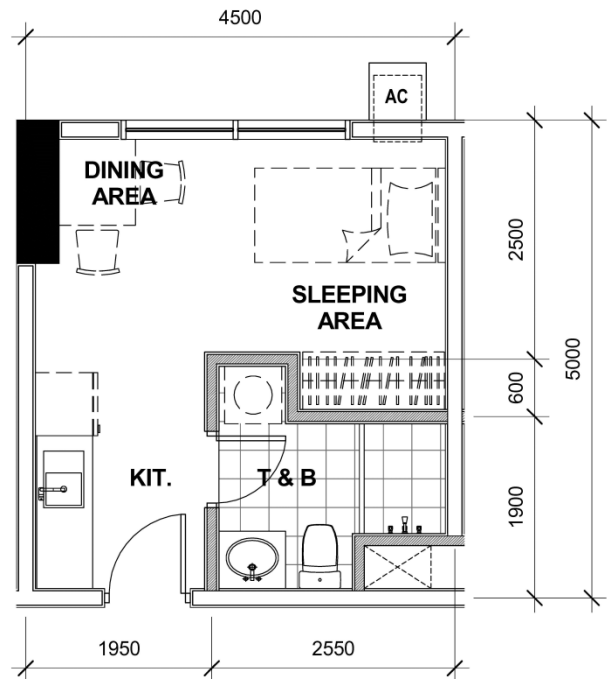
These renderings are based on the architect's perspective and do not form part of an offer or contract. Selling price is established principally on a per unit basis and not on the unit measurement or dimension. Empire East reserves the right to modify these illustrations without prior notice. Clients are invited to verify subsequent changes. As of August 2022. For reference and presentation purposes only.

# EMPIRE EAST HIGHLAND CITY

## ARCADIA : TOWER 4 - UNIT LAYOUT TYPICAL STUDIO UNITS



**21.38 SQM**  
2<sup>nd</sup> to 37<sup>th</sup> Level  
Unit 7, 21



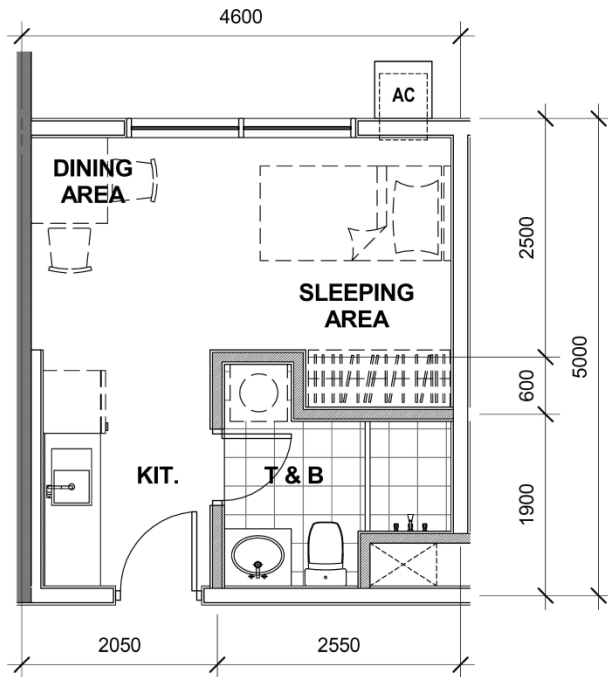
**21.88 SQM**  
2<sup>nd</sup> to 37<sup>th</sup> Level  
Unit 3, 14, 18

2<sup>nd</sup> Level  
Unit 24

3<sup>rd</sup> to 37<sup>th</sup> Level  
Unit 26

# EMPIRE EAST HIGHLAND CITY

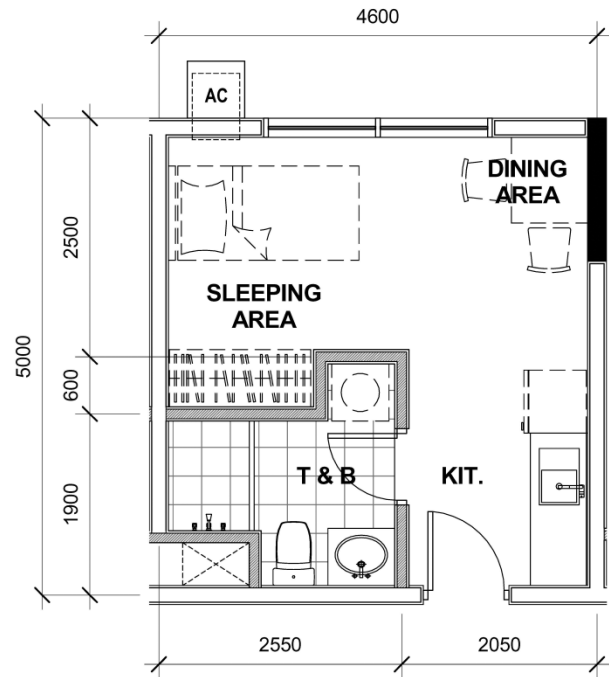
## ARCADIA : TOWER 4 - UNIT LAYOUT TYPICAL STUDIO UNITS



**21.88 SQM**  
2<sup>nd</sup> to 37<sup>th</sup> Level  
Unit 15

2<sup>nd</sup> Level  
Unit 25

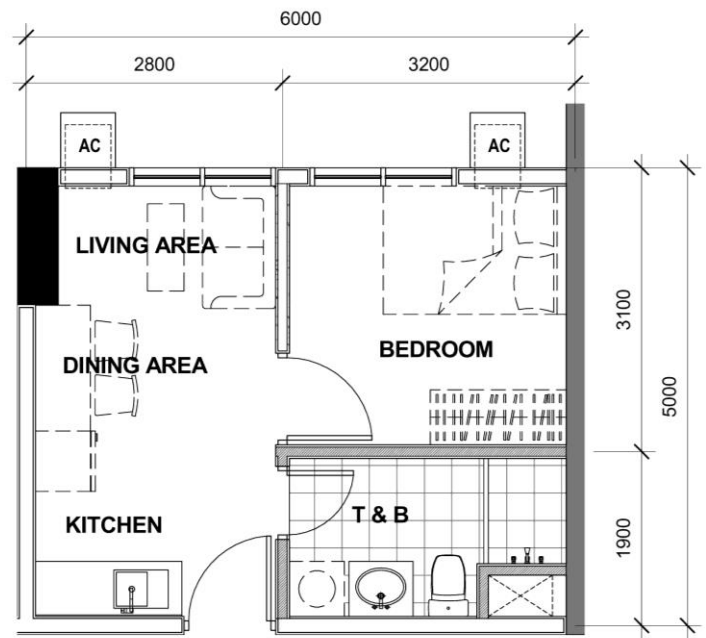
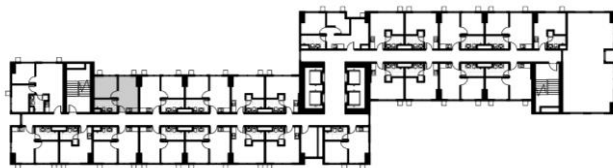
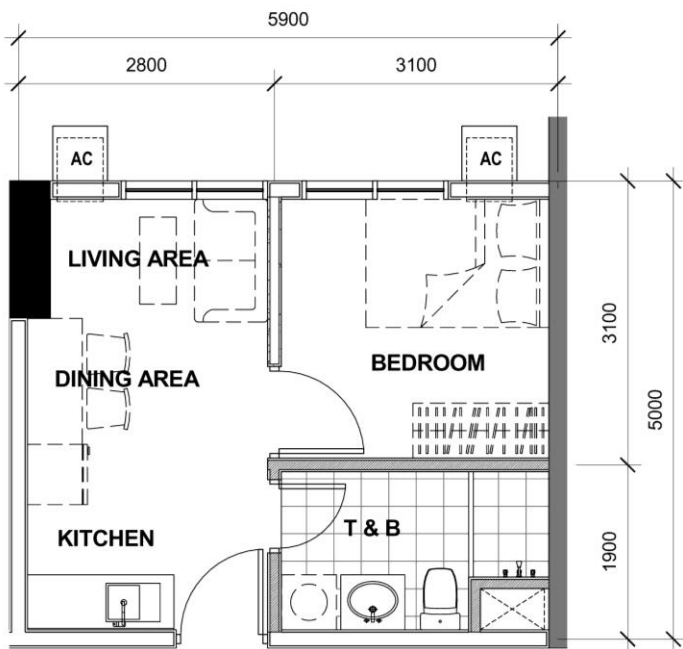
3<sup>rd</sup> to 37<sup>th</sup> Level  
Unit 27



**22.86 SQM**  
2<sup>nd</sup> to 37<sup>th</sup> Level  
Unit 2, 17

# EMPIRE EAST HIGHLAND CITY

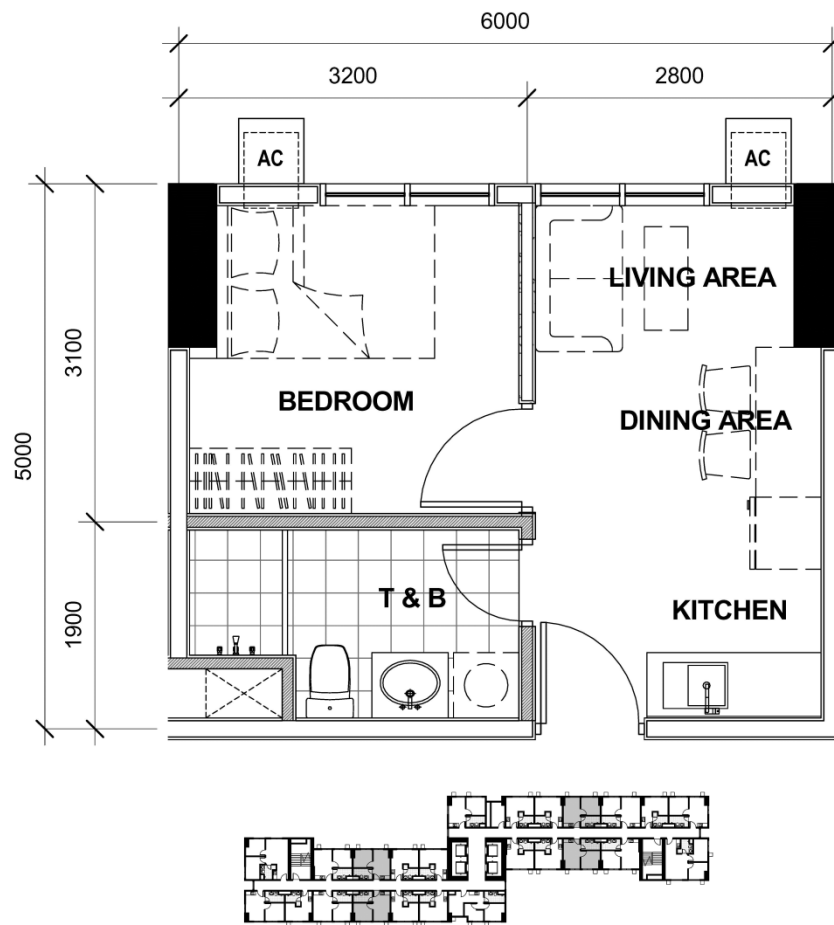
## CLUSTER 1 : TOWER 4 - UNIT LAYOUT TYPICAL ONE BEDROOM UNIT





# EMPIRE EAST HIGHLAND CITY

## ARCADIA : TOWER 4 - UNIT LAYOUT TYPICAL ONE BEDROOM UNIT



**29.38 SQM**

2<sup>nd</sup> Level

Unit 23

2<sup>nd</sup> to 37<sup>th</sup> Level

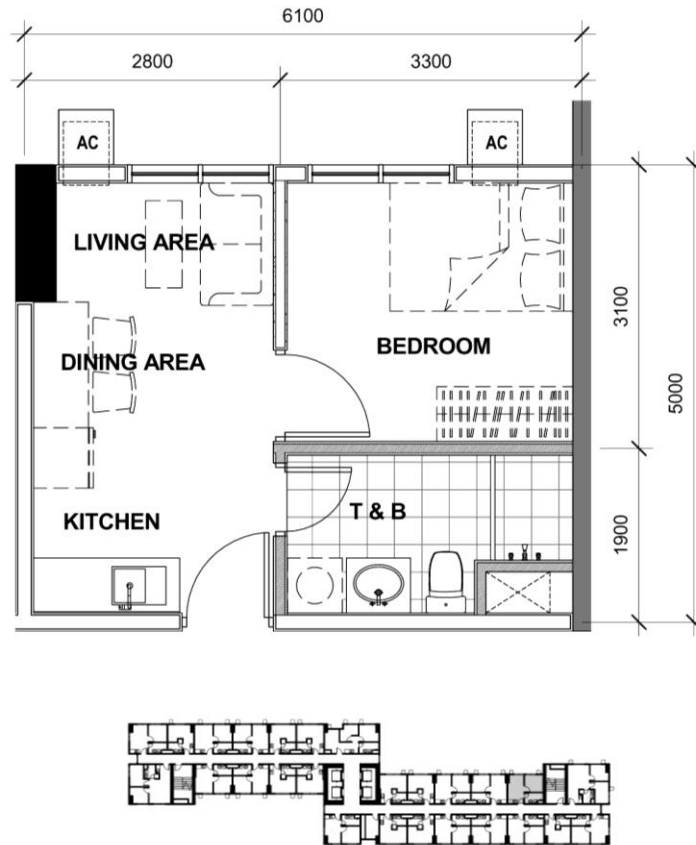
Unit 4, 5, 11, 12, 19

3<sup>rd</sup> to 37<sup>th</sup> Level

Unit 25

# EMPIRE EAST HIGHLAND CITY

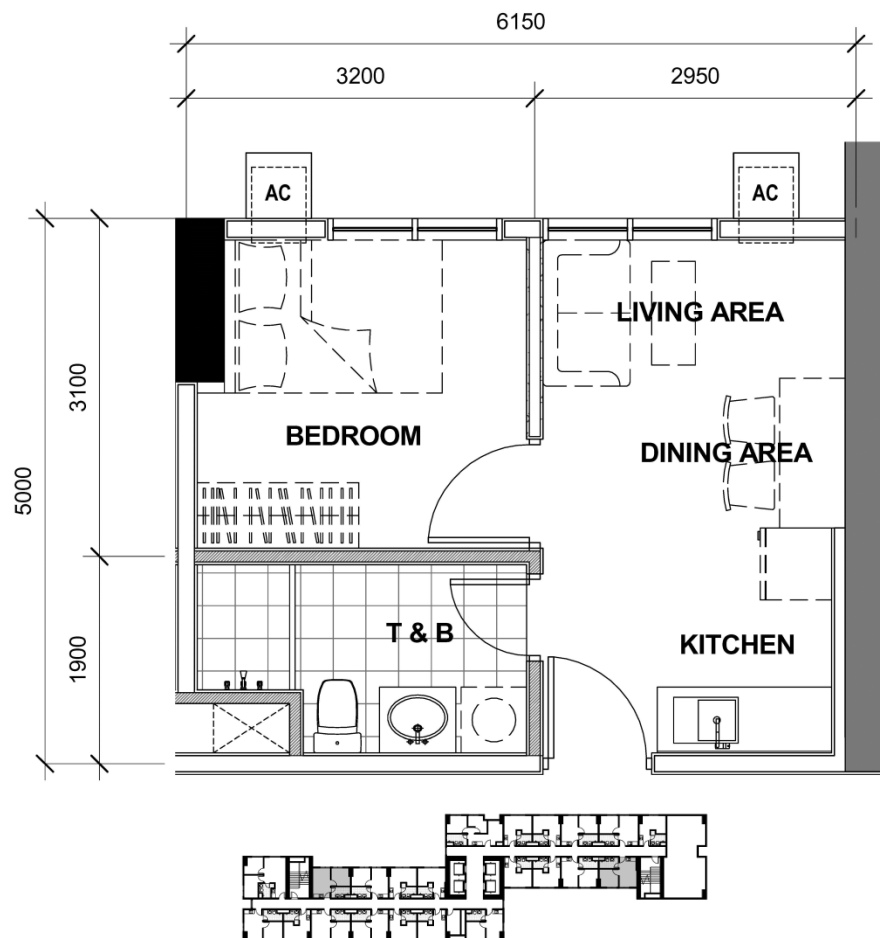
## ARCADIA : TOWER 4 - UNIT LAYOUT TYPICAL ONE BEDROOM UNIT



**29.38 SQM**  
7<sup>th</sup> to 37<sup>th</sup> Level  
Unit 10

# EMPIRE EAST HIGHLAND CITY

## ARCADIA : TOWER 4 - UNIT LAYOUT TYPICAL ONE BEDROOM UNIT



**29.63 SQM**  
2<sup>nd</sup> Level  
Unit 22

# EMPIRE EAST HIGHLAND CITY

## CLUSTER 1 : TOWER 4 - UNIT LAYOUT TYPICAL ONE BEDROOM UNIT

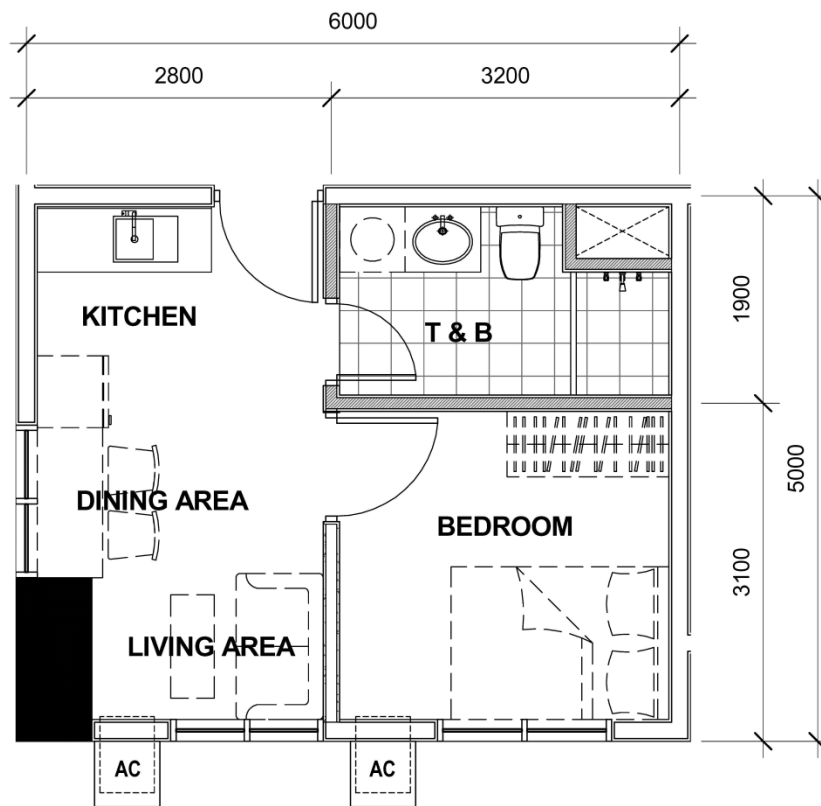


**29.82 SQM**  
2<sup>nd</sup> to 37<sup>th</sup> Level  
Unit 6



# EMPIRE EAST HIGHLAND CITY

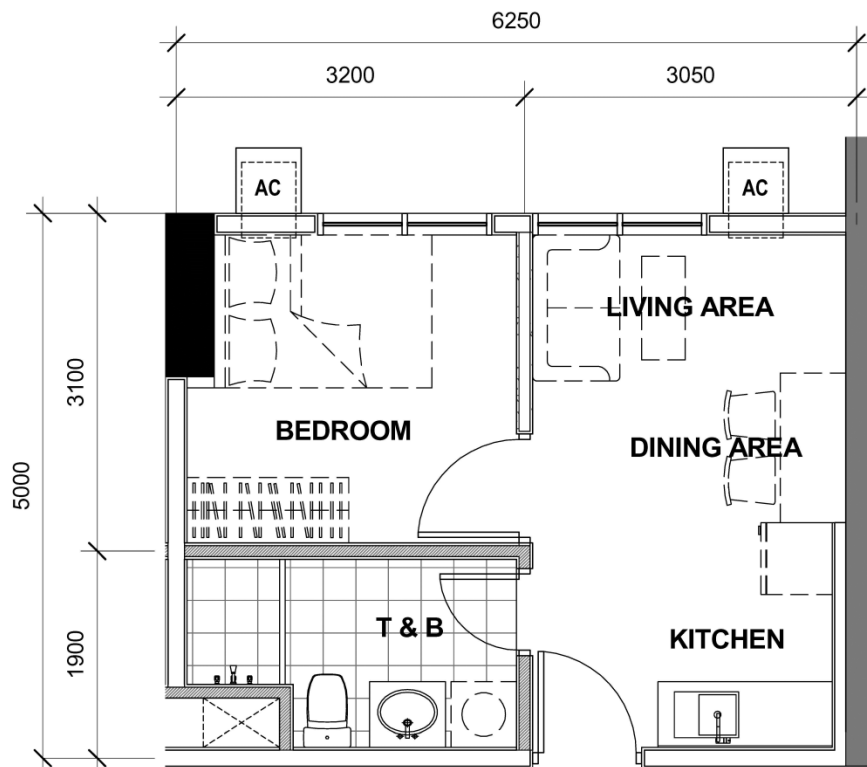
## ARCADIA : TOWER 4 - UNIT LAYOUT TYPICAL ONE BEDROOM UNIT



**29.93 SQM**  
2<sup>nd</sup> to 37<sup>th</sup> Level  
Unit 1

# EMPIRE EAST HIGHLAND CITY

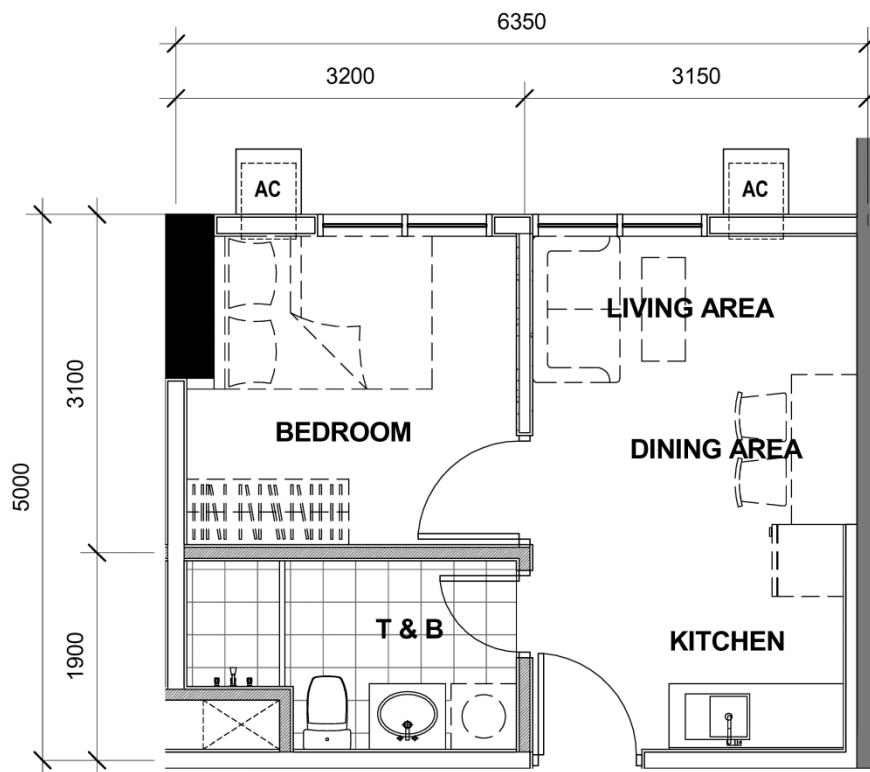
## ARCADIA : TOWER 4 - UNIT LAYOUT TYPICAL ONE BEDROOM UNIT



**30.13 SQM**  
3<sup>rd</sup> to 6<sup>th</sup> Level  
Unit 24

# EMPIRE EAST HIGHLAND CITY

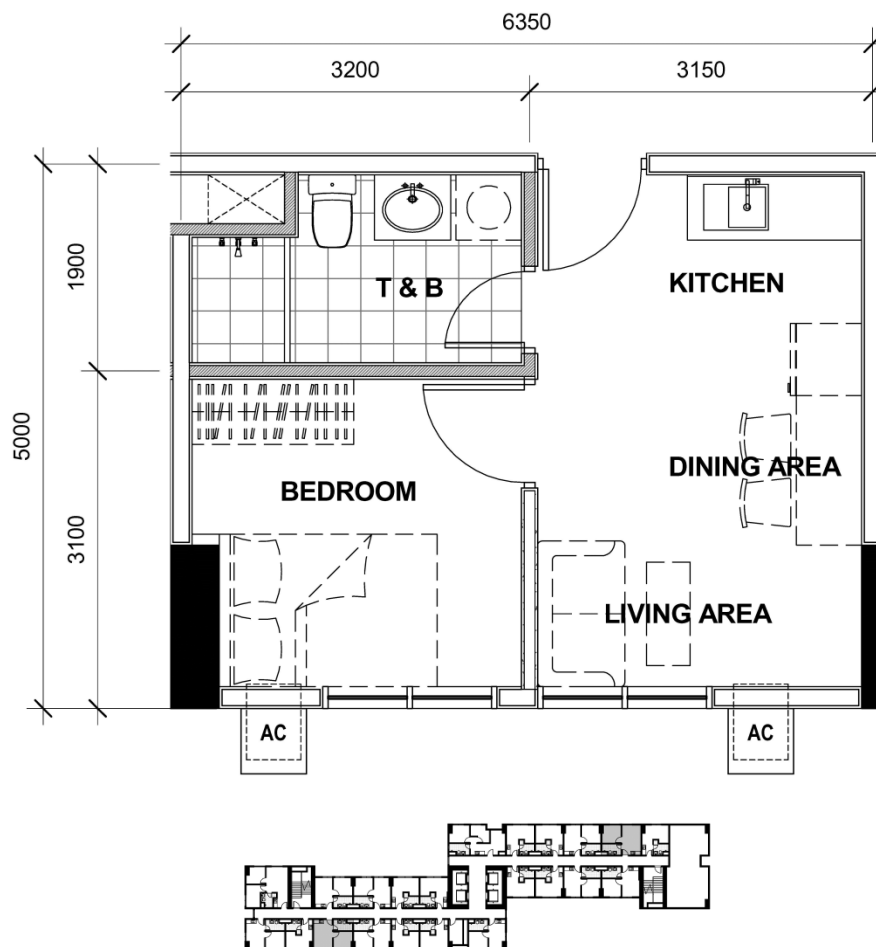
## ARCADIA : TOWER 4 - UNIT LAYOUT TYPICAL ONE BEDROOM UNIT



**30.63 SQM**  
7<sup>th</sup> to 37<sup>th</sup> Level  
Unit 24

# EMPIRE EAST HIGHLAND CITY

## ARCADIA : TOWER 4 - UNIT LAYOUT TYPICAL ONE BEDROOM UNIT

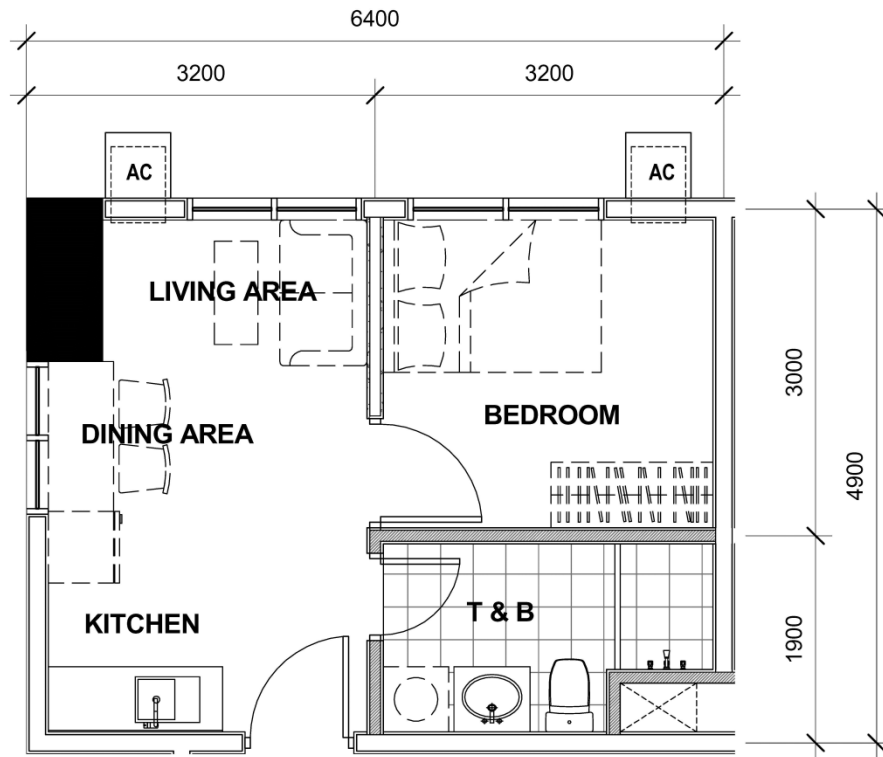


**31.13 SQM**  
2<sup>nd</sup> to 37<sup>th</sup> Level  
Unit 20



# EMPIRE EAST HIGHLAND CITY

## ARCADIA : TOWER 4 - UNIT LAYOUT TYPICAL ONE BEDROOM UNIT

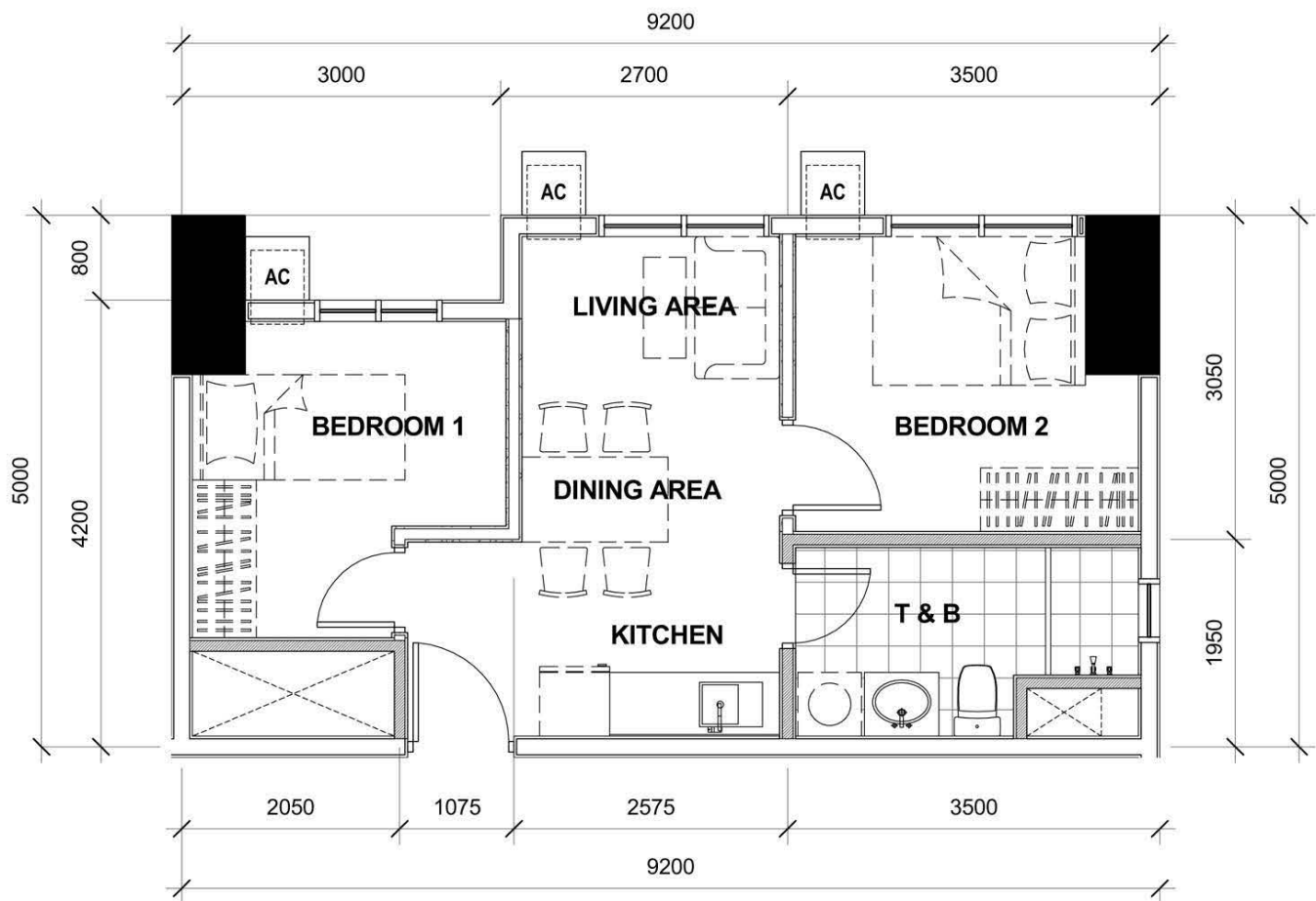


**31.52 SQM**  
2<sup>nd</sup> to 37<sup>th</sup> Level  
Unit 8

3<sup>rd</sup> to 37<sup>th</sup> Level  
Unit 22

# EMPIRE EAST HIGHLAND CITY

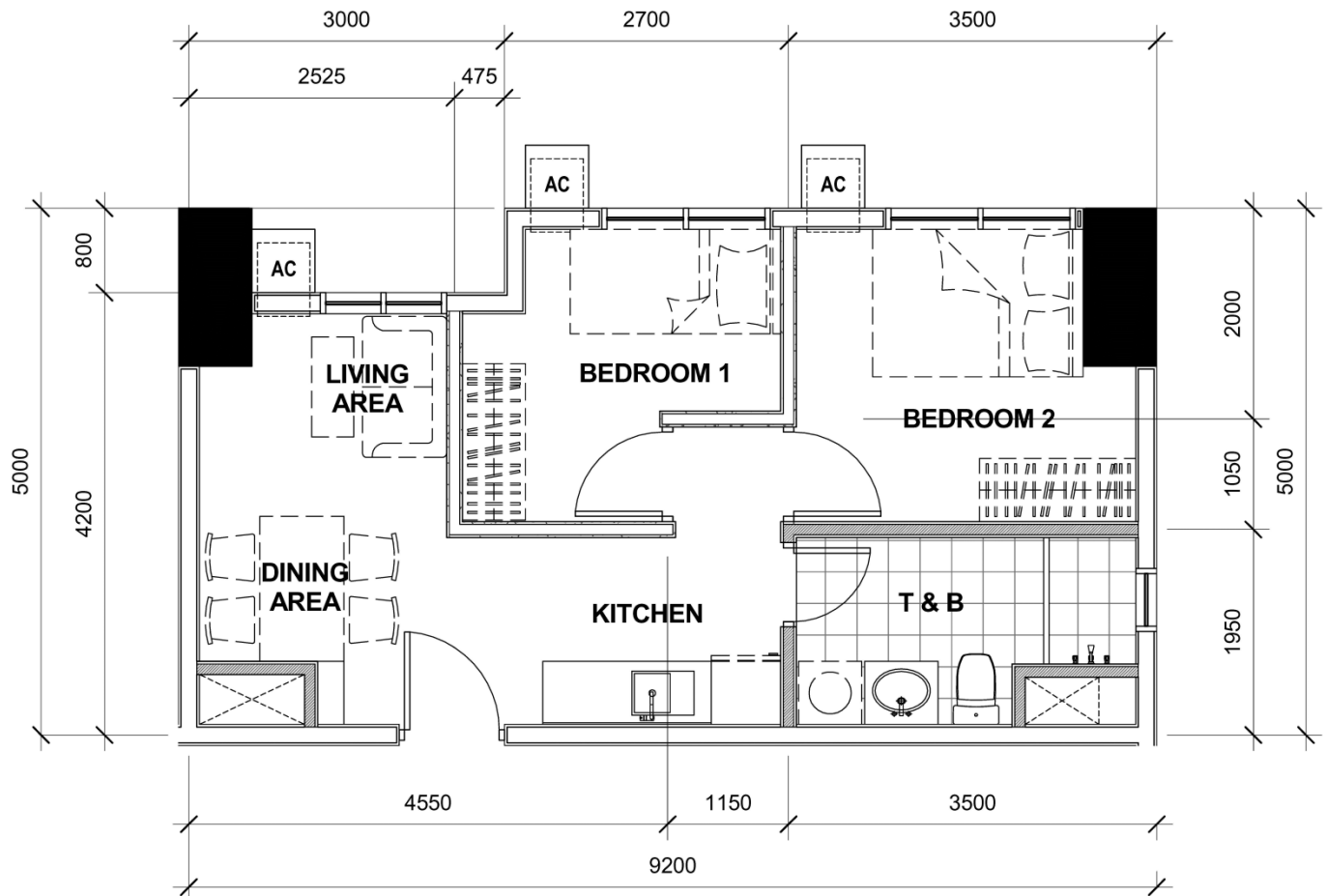
## ARCADIA : TOWER 4 - UNIT LAYOUT TYPICAL TWO BEDROOM UNIT



**40.81 SQM**  
10<sup>th</sup> and 21<sup>st</sup> Level  
Unit 16

# EMPIRE EAST HIGHLAND CITY

## ARCADIA : TOWER 4 - UNIT LAYOUT TYPICAL TWO BEDROOM UNIT



**42.06 SQM**  
 2<sup>nd</sup> to 9<sup>th</sup> Level  
 11<sup>th</sup> to 20<sup>th</sup> Level  
 22<sup>nd</sup> to 37<sup>th</sup> Level  
 Unit 16

These renderings are based on the architect's perspective and do not form part of an offer or contract. Selling price is established principally on a per unit basis and not on the unit measurement or dimension. Empire East reserves the right to modify these illustrations without prior notice. Clients are invited to verify subsequent changes. As of August 2022. For reference and presentation purposes only.

# EMPIRE EAST HIGHLAND CITY

## ARCADIA : TOWER 4 - UNIT LAYOUT TYPICAL TWO BEDROOM UNIT

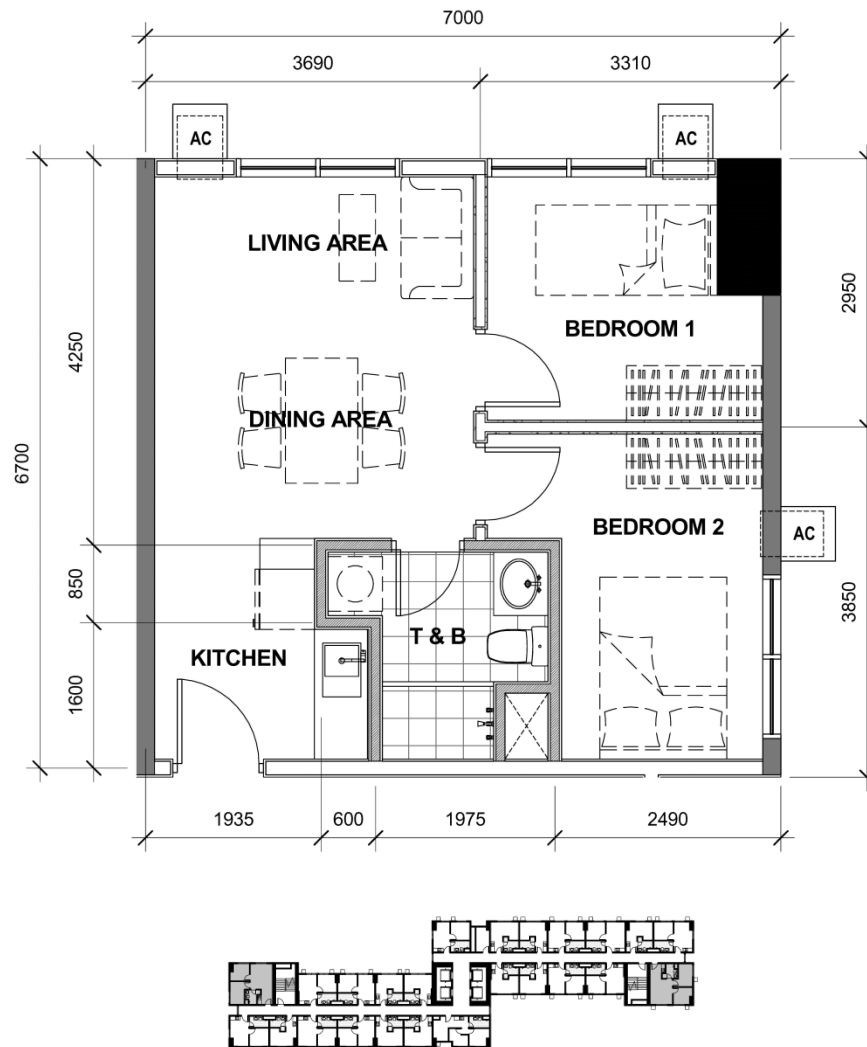


**45.16 SQM**  
2<sup>nd</sup> Level  
Unit 9



# EMPIRE EAST HIGHLAND CITY

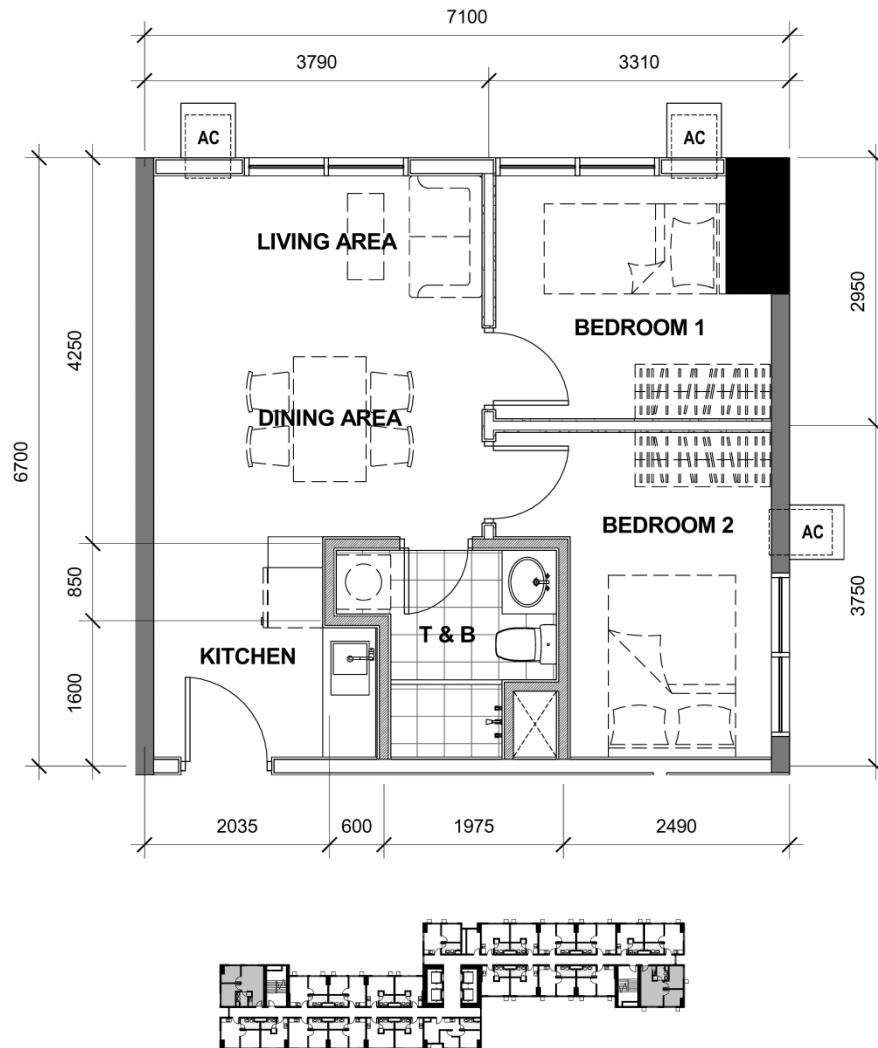
## ARCADIA : TOWER 4 - UNIT LAYOUT TYPICAL TWO BEDROOM UNIT



**45.83 SQM**  
3<sup>rd</sup> to 6<sup>th</sup> Level  
Unit 9, 23

# EMPIRE EAST HIGHLAND CITY

## ARCADIA : TOWER 4 - UNIT LAYOUT TYPICAL TWO BEDROOM UNIT



**46.50 SQM**  
7<sup>th</sup> to 37<sup>th</sup> Level  
Unit 9, 23