



MANGO TREE RESIDENCES

PROJECT DETAILS :

Address: along Paterno Street
corner Ledesma Street San
Juan City

No. of Towers : 2

No. of Floors : 38

Unit Types Offered:

1-Bedroom Suite

2-Bedroom Suite

1-Bedroom and 2-Bedroom

Suite Penthouse Unit



MEGAWORLD
INTERNATIONAL



Little Baguio Residences



Mango Tree Residences

Location Map

FLOOR PLANS



MEGAWORLD
INTERNATIONAL



GROUND LEVEL



WEST RESIDENCES

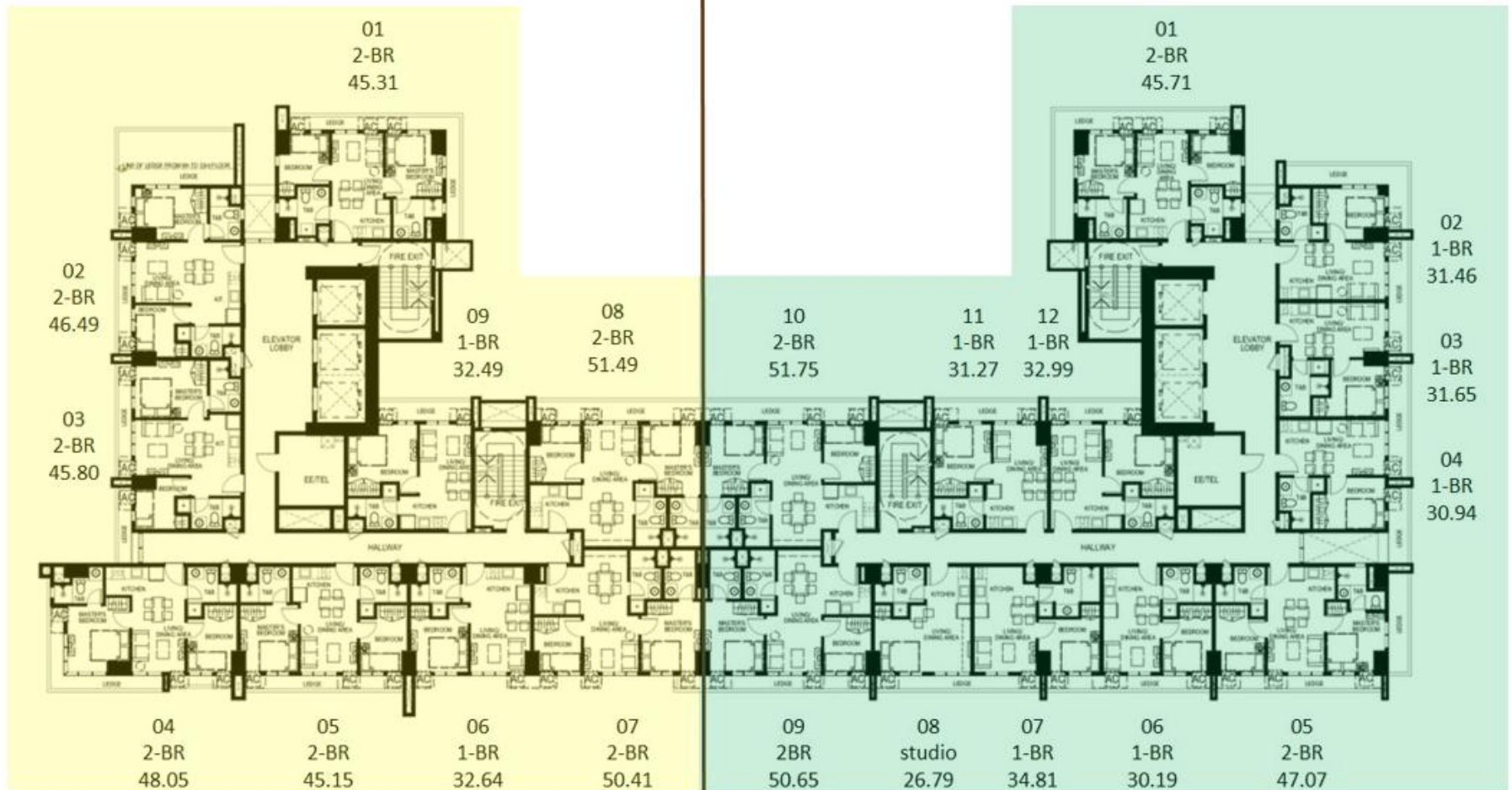
EAST RESIDENCES



GARDEN DECK 7th LEVEL

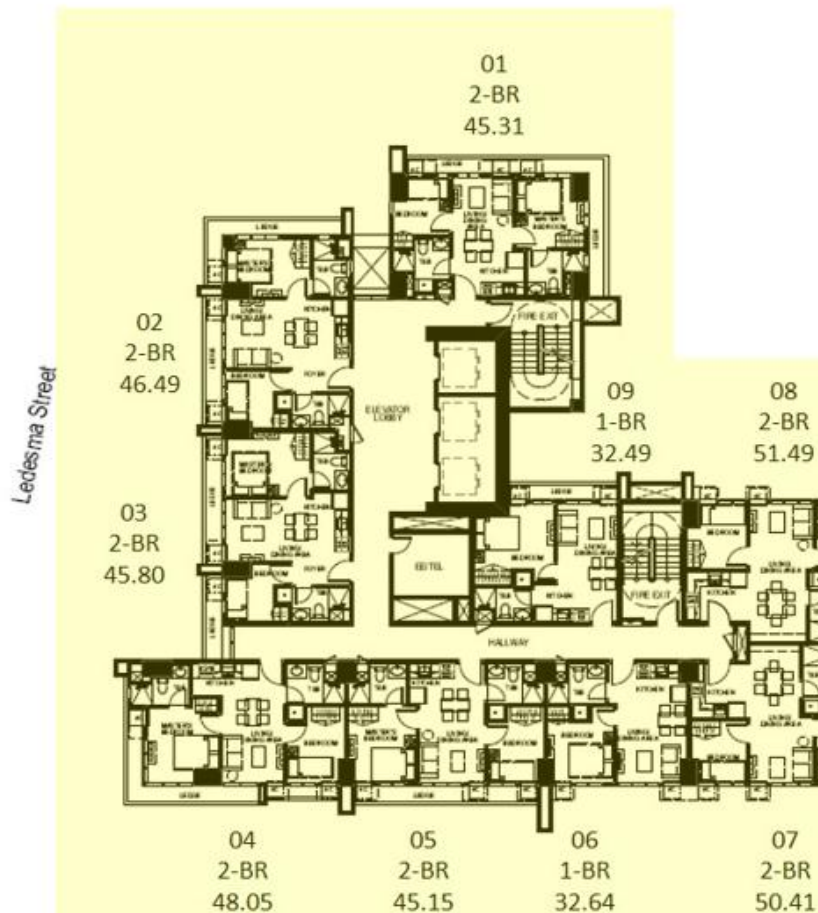
WEST RESIDENCES

EAST RESIDENCES



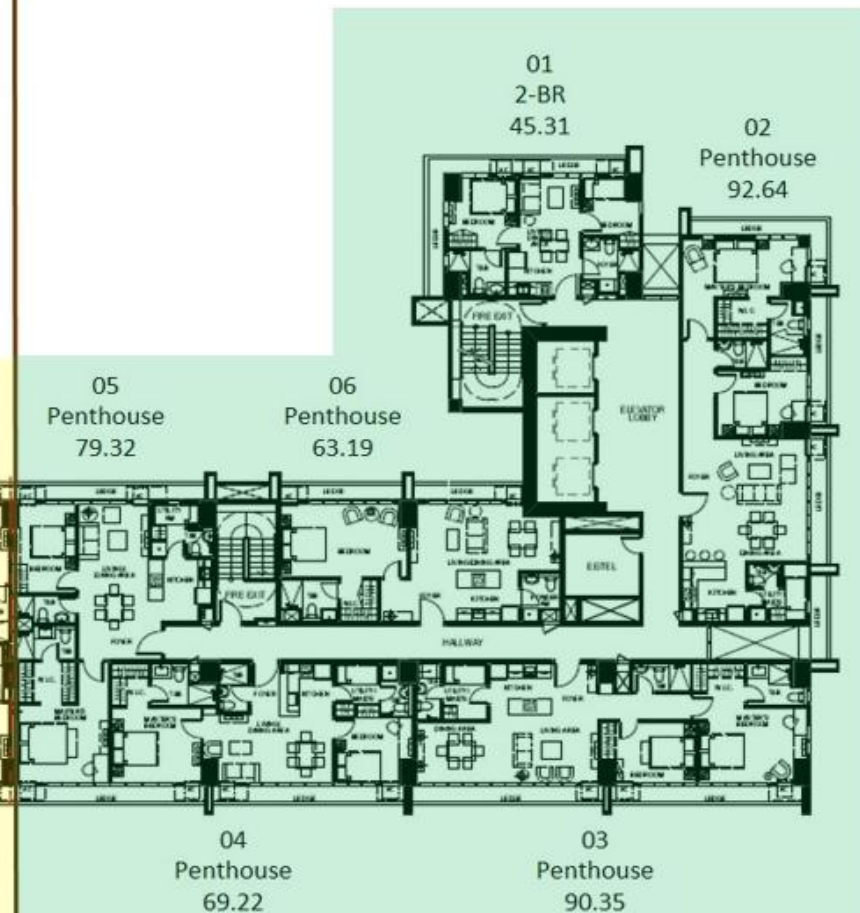
TYPICAL FLOOR PLAN
8TH TO 33RD LEVEL

WEST RESIDENCES



TYPICAL 34th LEVEL

EAST RESIDENCES



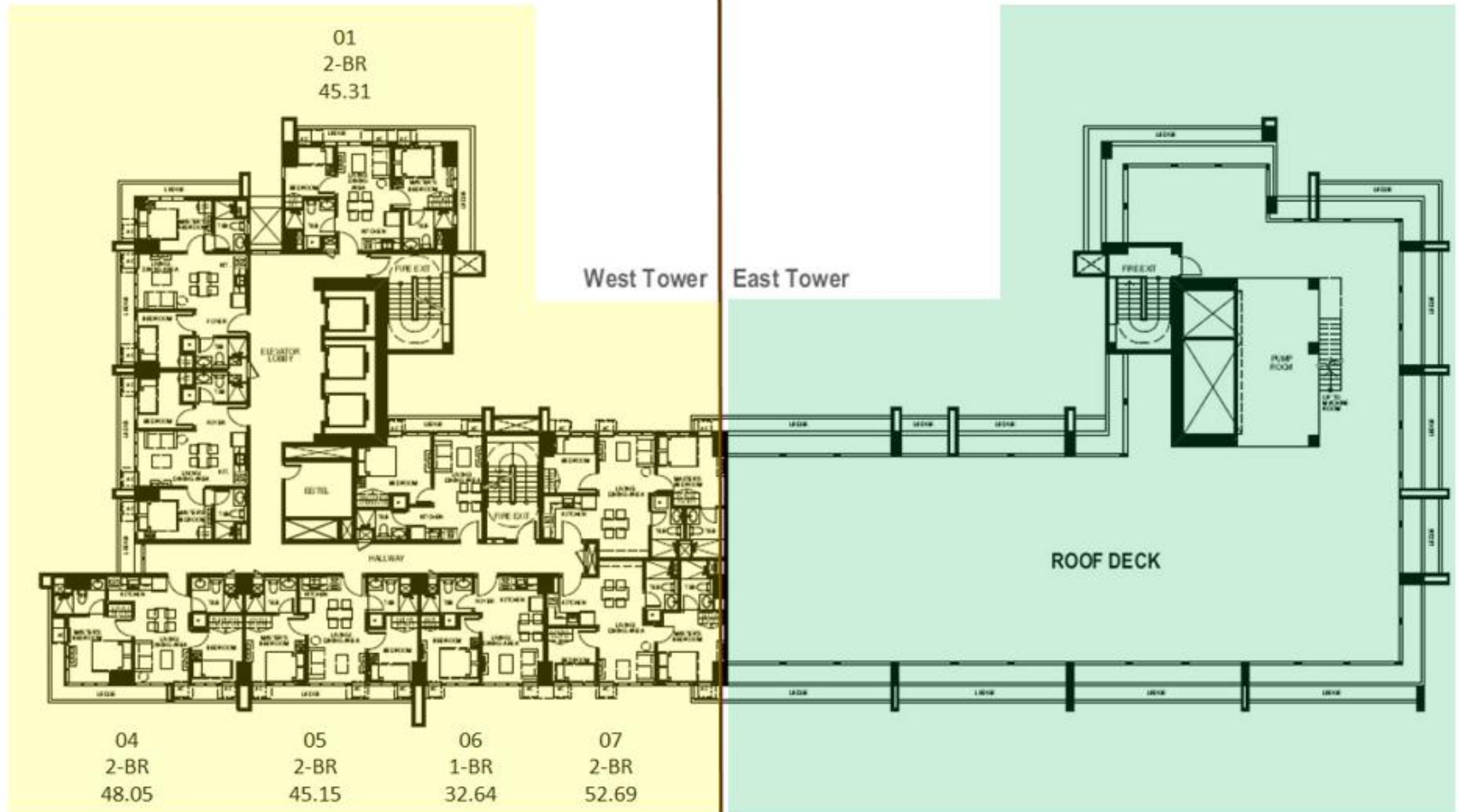
PENTHOUSE 34th LEVEL



WEST RESIDENCES

EAST RESIDENCES

Ledesma Street



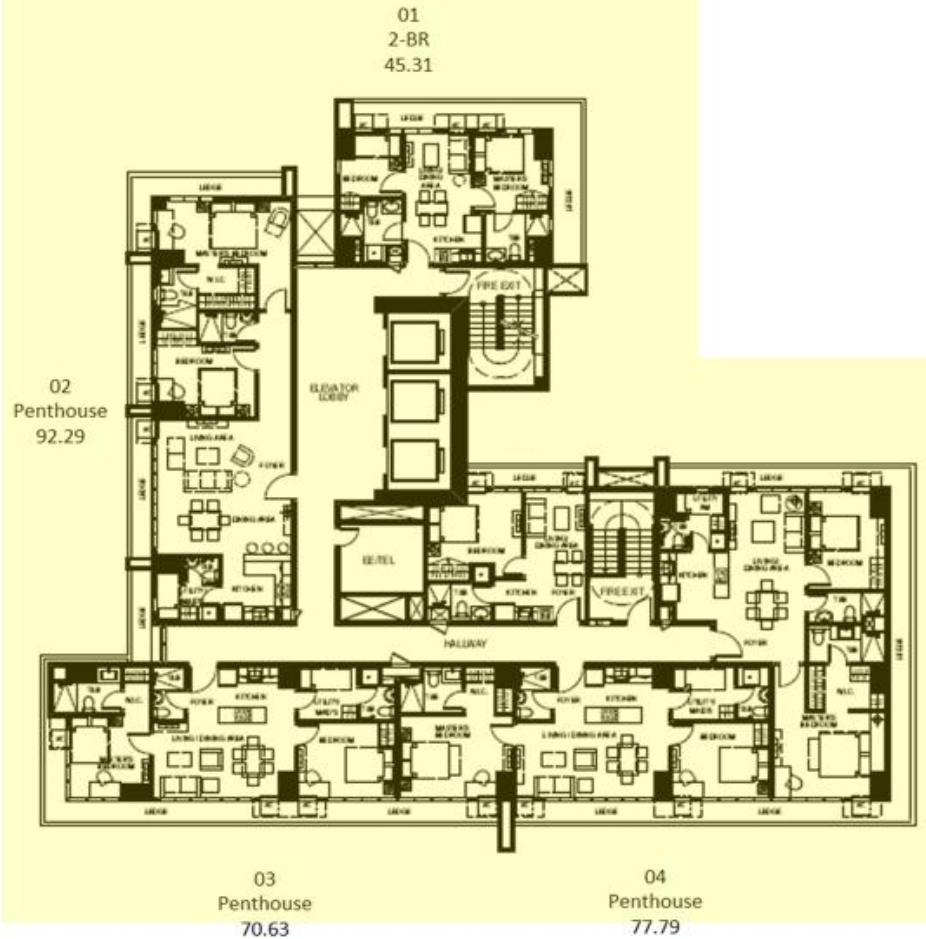
TYPICAL
34th to 37th LEVEL

ROOF DECK
35th LEVEL

WEST RESIDENCES

EAST RESIDENCES

Ledesma Street



05
Penthouse
83.89



PENTHOUSE
38th LEVEL

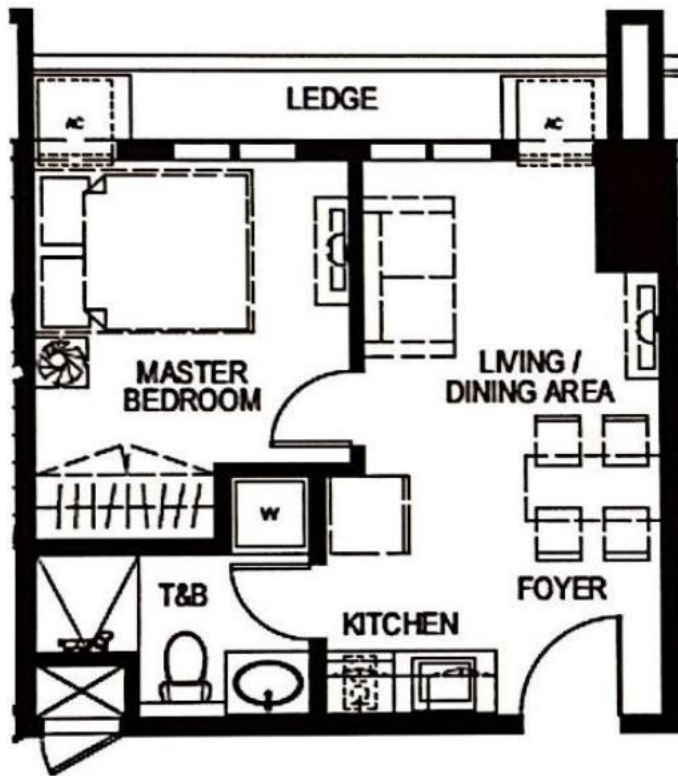
UNIT LAYOUTS



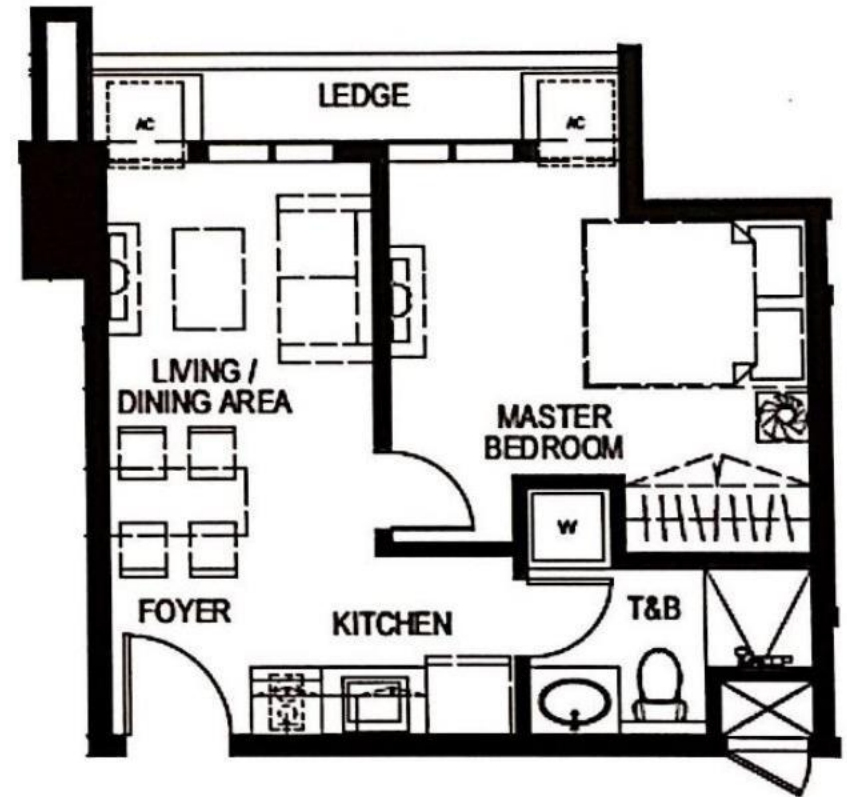
MEGAWORLD
INTERNATIONAL

TYPICAL LEVEL- UNIT LAYOUT

ONE BEDROOM SUITES



30.76 SQM
EAST RESIDENCES
Unit 09



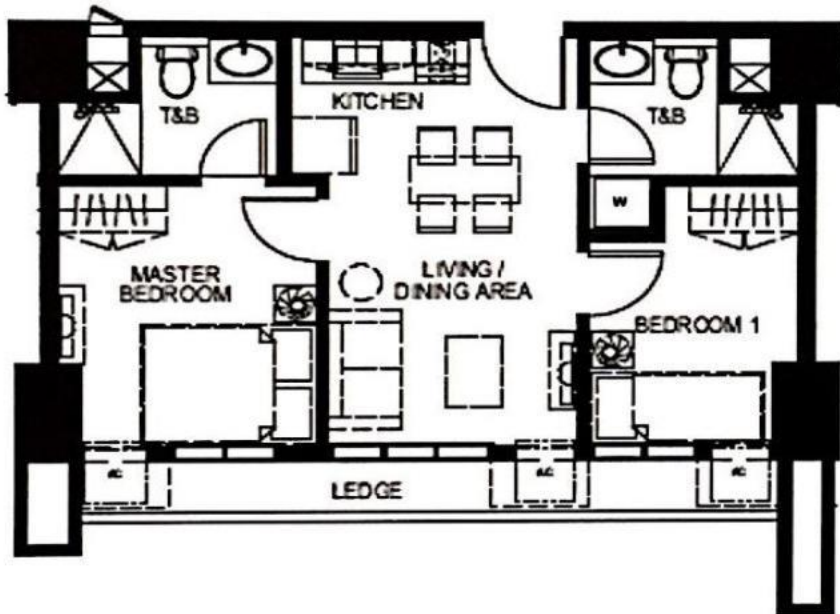
32.43 SQM
EAST RESIDENCES
Unit 10

These renderings are based on the architect's perspective and do not form part of an offer or contract. Selling price is established principally on a per unit basis and not on the unit measurement or dimension. Empire East reserves the right to modify these illustrations without prior notice. Clients are invited to verify subsequent changes.

As of January 2014. For reference and presentation purposes only.

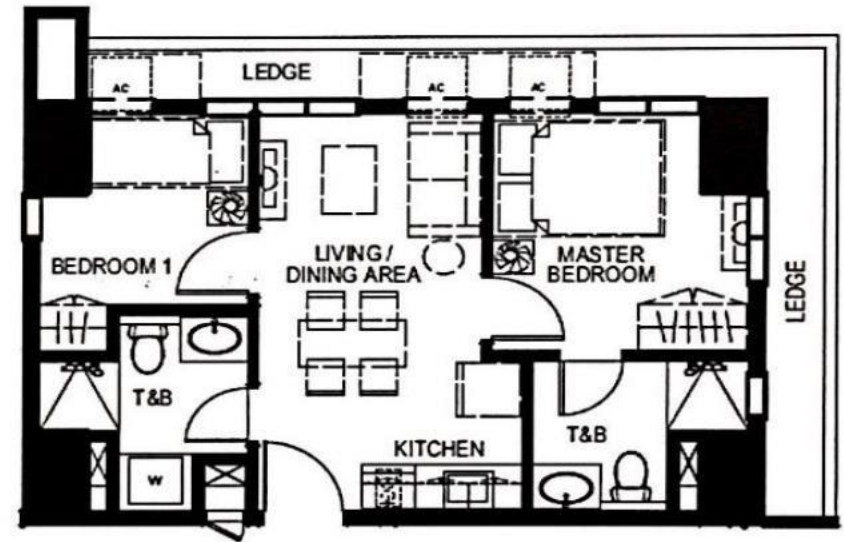
TYPICAL LEVEL- UNIT LAYOUT

TWO BEDROOM SUITES



45.15 SQM
WEST RESIDENCES
Unit 05

EAST RESIDENCES
Unit 05 & 06



45.31 SQM
WEST RESIDENCES
Unit 01

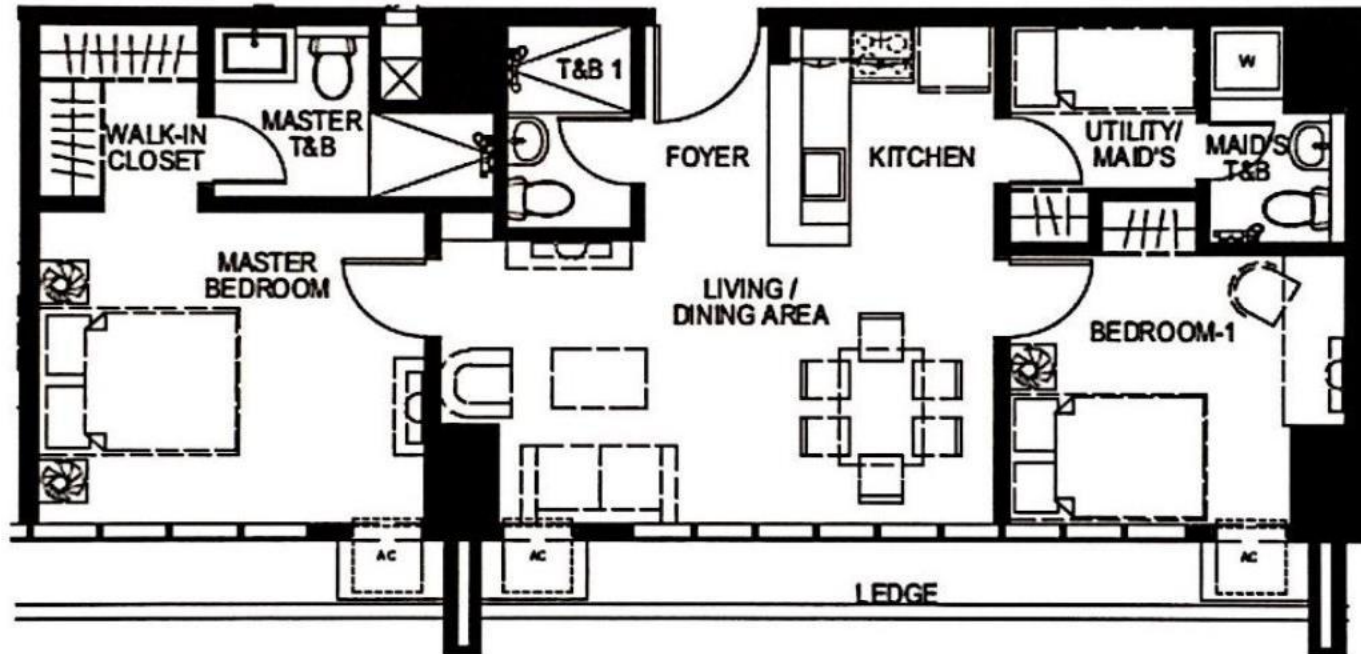
EAST RESIDENCES
Unit 01

These renderings are based on the architect's perspective and do not form part of an offer or contract. Selling price is established principally on a per unit basis and not on the unit measurement or dimension. Empire East reserves the right to modify these illustrations without prior notice. Clients are invited to verify subsequent changes.

As of January 2014. For reference and presentation purposes only.

PENTHOUSE LEVEL- UNIT LAYOUT

TWO BEDROOM SUITES



69.22 SQM
EAST RESIDENCES
Penthouse Unit 04

These renderings are based on the architect's perspective and do not form part of an offer or contract. Selling price is established principally on a per unit basis and not on the unit measurement or dimension. Empire East reserves the right to modify these illustrations without prior notice. Clients are invited to verify subsequent changes.

As of January 2014. For reference and presentation purposes only.

Living, Dining and Bedroom Areas

- Painted finished walls and slab soffit ceiling
- Smoke detector and automatic fire sprinkler
- Swing-type aluminum casement windows
- Ceramic tiles flooring
- Solid wood flush doors

Kitchen Area

- Custom-built overhead and under counter cabinets
- Stainless sink on granite countertop
- Provision for range hood exhaust system

Toilet and Bath

- Vessel-type wash basin on granite countertop
- Ceramic tiles for flooring and wall
- Rain shower head
- Soap and paper holder
- Mechanical Ventilation



**MEGAWORLD
INTERNATIONAL**

Typical Residence Features



Drop-off Area along M. Paterno St.



Pool Area

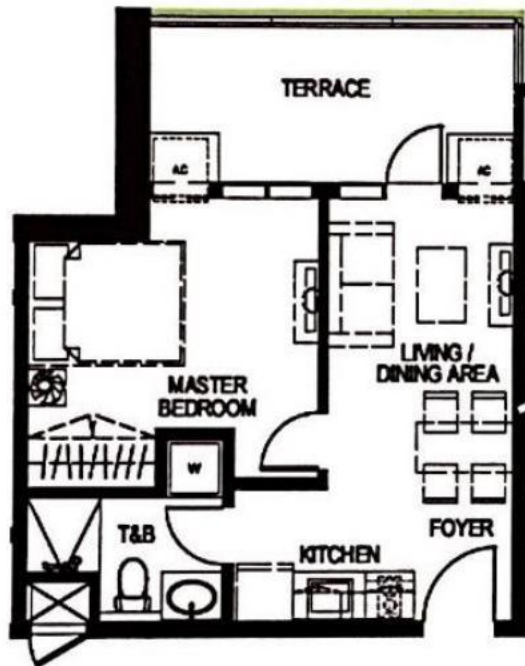
OTHER UNIT LAYOUTS



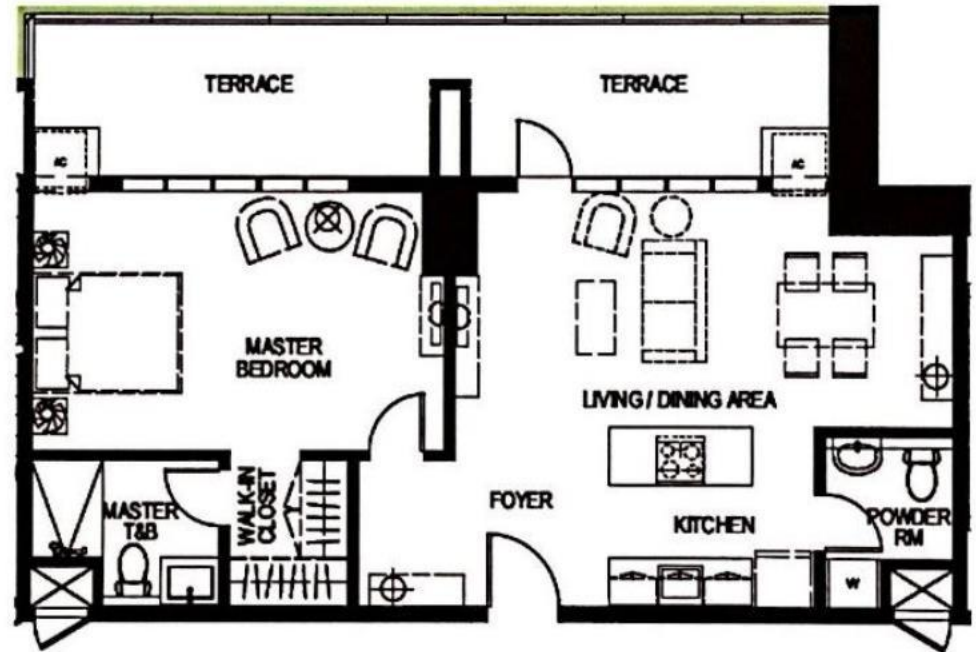
MEGAWORLD
INTERNATIONAL

GARDEN DECK (7th level) - UNIT LAYOUT

ONE BEDROOM SUITES WITH PATIO



41.72 SQM
WEST RESIDENCES
Unit 09



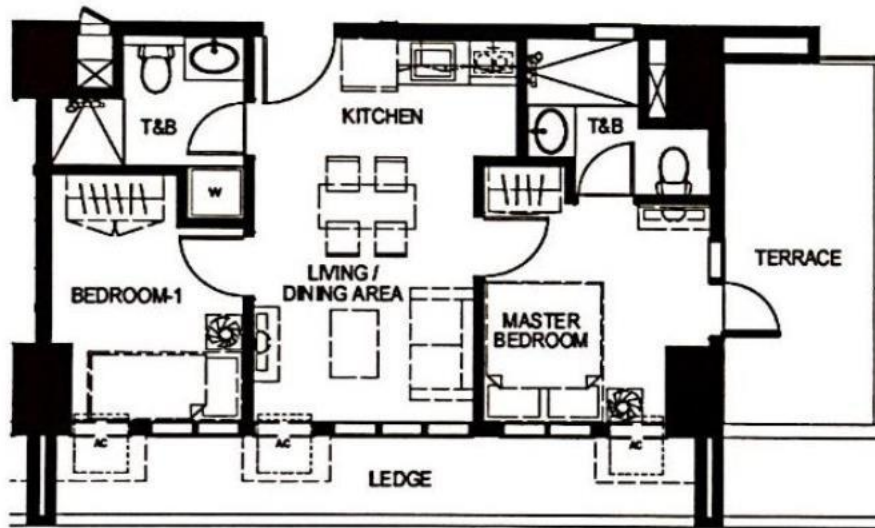
83.63 SQM
EAST RESIDENCES
Unit 09

These renderings are based on the architect's perspective and do not form part of an offer or contract. Selling price is established principally on a per unit basis and not on the unit measurement or dimension. Empire East reserves the right to modify these illustrations without prior notice. Clients are invited to verify subsequent changes.

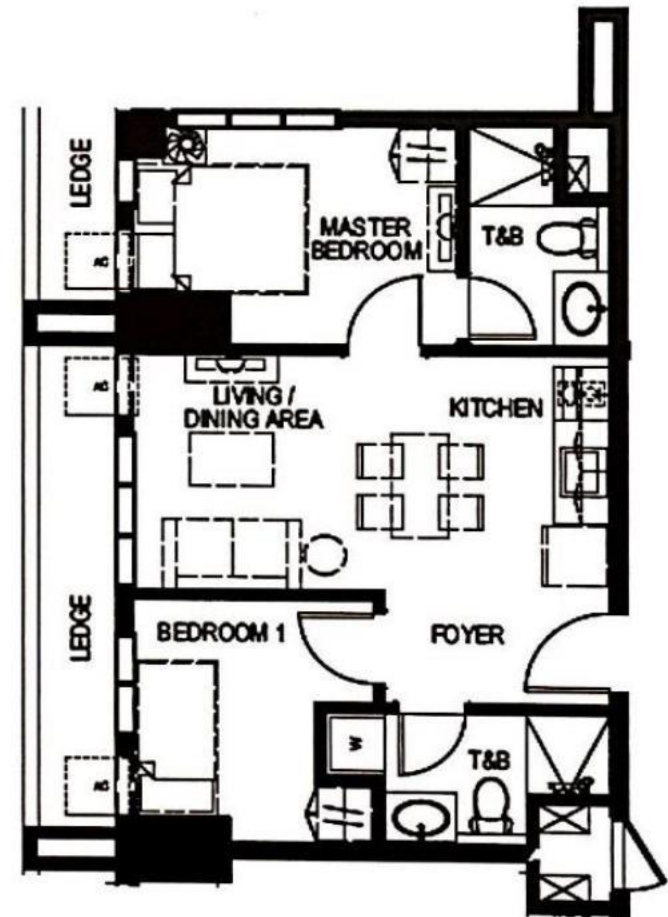
As of January 2014. For reference and presentation purposes only.

GARDEN DECK (7th level) - UNIT LAYOUT

TWO BEDROOM SUITES WITH PATIO



56.95 SQM
EAST RESIDENCES
Unit 04



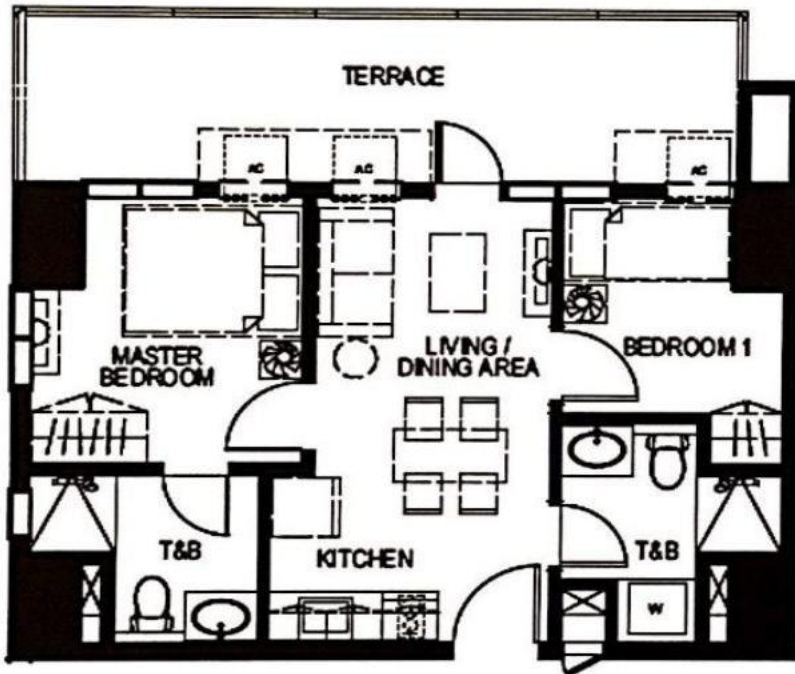
57.49 SQM
WEST RESIDENCES
Unit 02

These renderings are based on the architect's perspective and do not form part of an offer or contract. Selling price is established principally on a per unit basis and not on the unit measurement or dimension. Empire East reserves the right to modify these illustrations without prior notice. Clients are invited to verify subsequent changes.

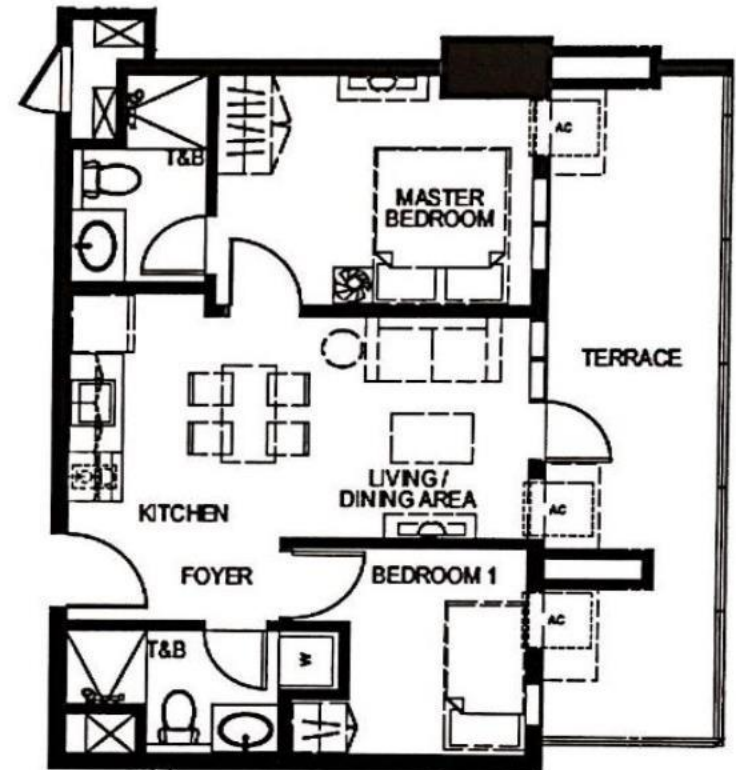
As of January 2014. For reference and presentation purposes only.

GARDEN DECK (7th level) - UNIT LAYOUT

TWO BEDROOM SUITES WITH PATIO



60.77 SQM
EAST RESIDENCES
Unit 01



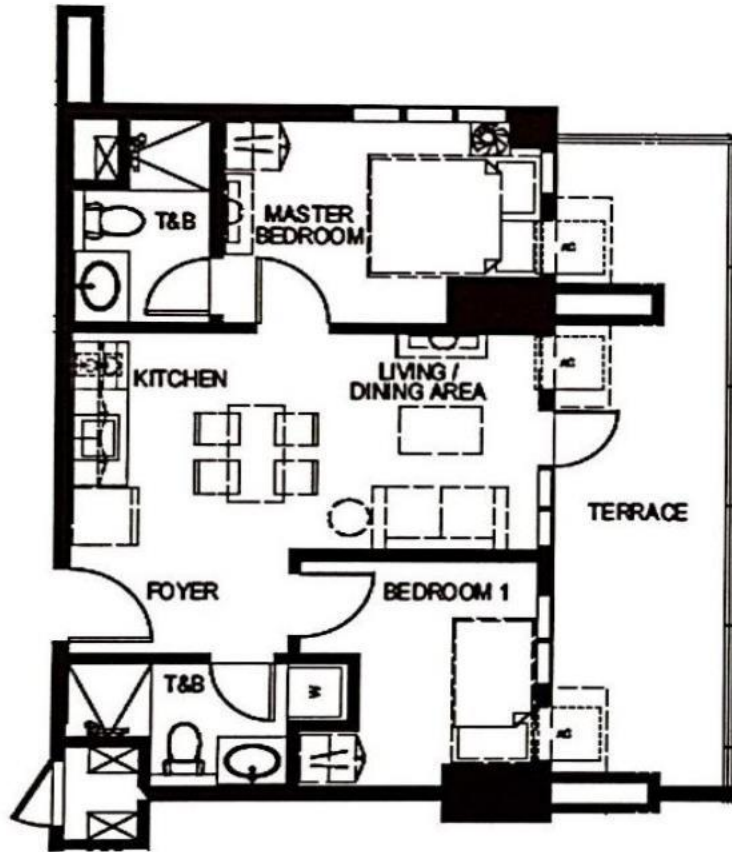
62.59 SQM
EAST RESIDENCES
Unit 03

These renderings are based on the architect's perspective and do not form part of an offer or contract. Selling price is established principally on a per unit basis and not on the unit measurement or dimension. Empire East reserves the right to modify these illustrations without prior notice. Clients are invited to verify subsequent changes.

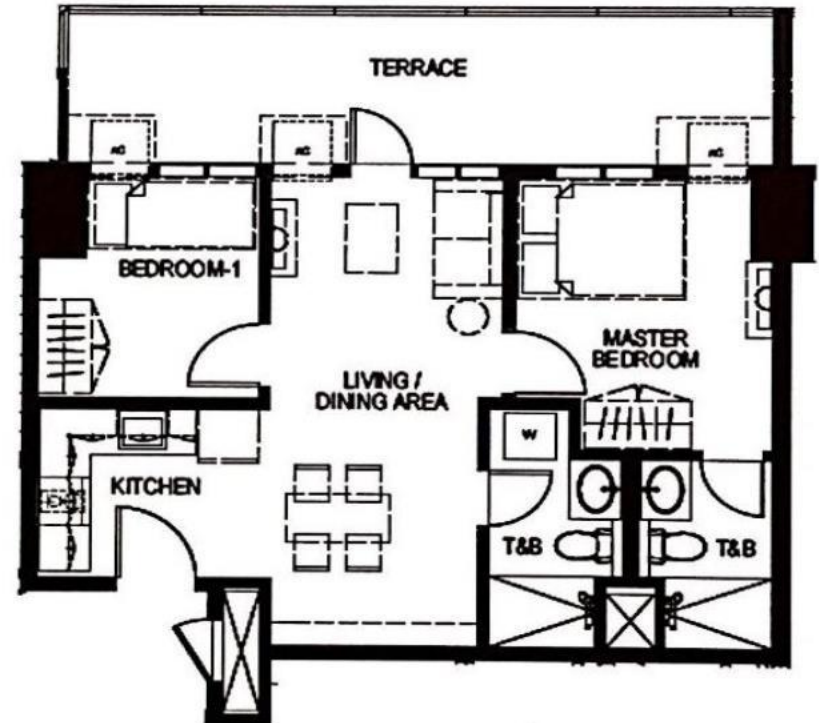
As of January 2014. For reference and presentation purposes only.

GARDEN DECK (7th level) - UNIT LAYOUT

TWO BEDROOM SUITES WITH PATIO



62.94 SQM
EAST RESIDENCES
Unit 02



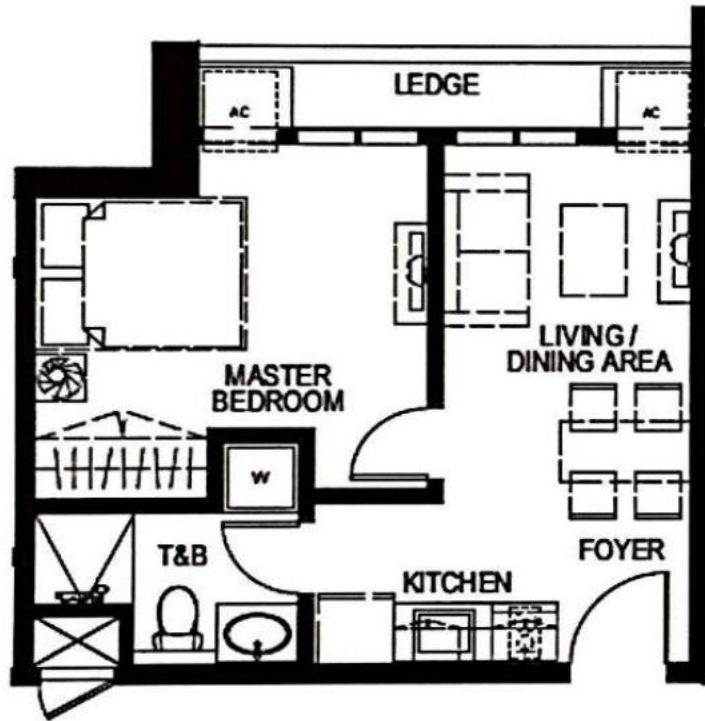
67.89 SQM
EAST & WEST RESIDENCES
Unit 08

These renderings are based on the architect's perspective and do not form part of an offer or contract. Selling price is established principally on a per unit basis and not on the unit measurement or dimension. Empire East reserves the right to modify these illustrations without prior notice. Clients are invited to verify subsequent changes.

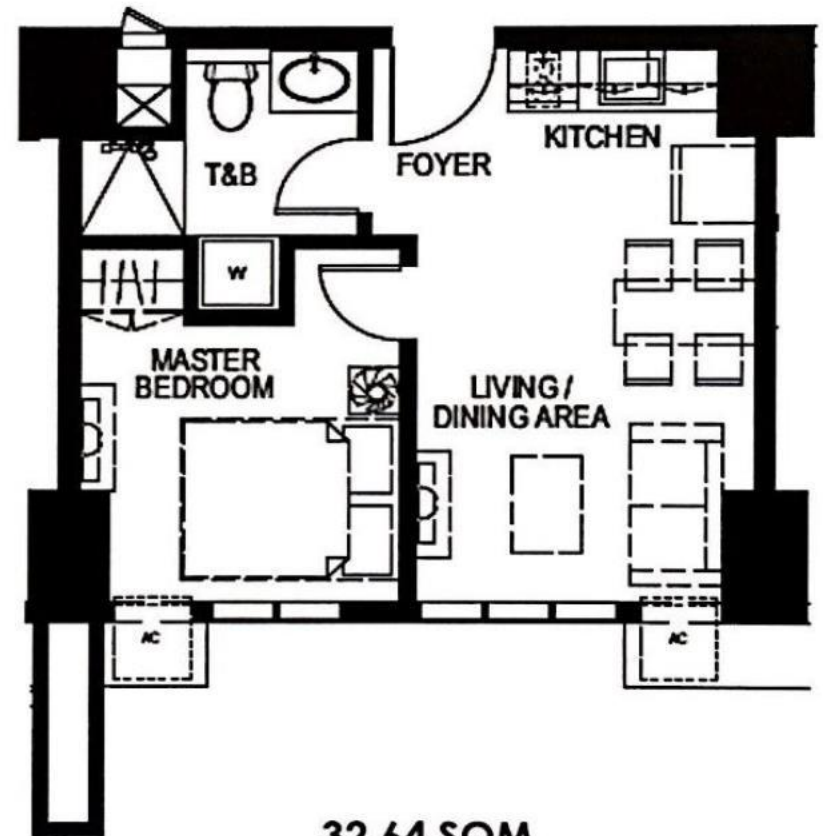
As of January 2014. For reference and presentation purposes only.

TYPICAL LEVEL- UNIT LAYOUT

ONE BEDROOM SUITES



32.49 SQM
WEST RESIDENCES
Unit 09



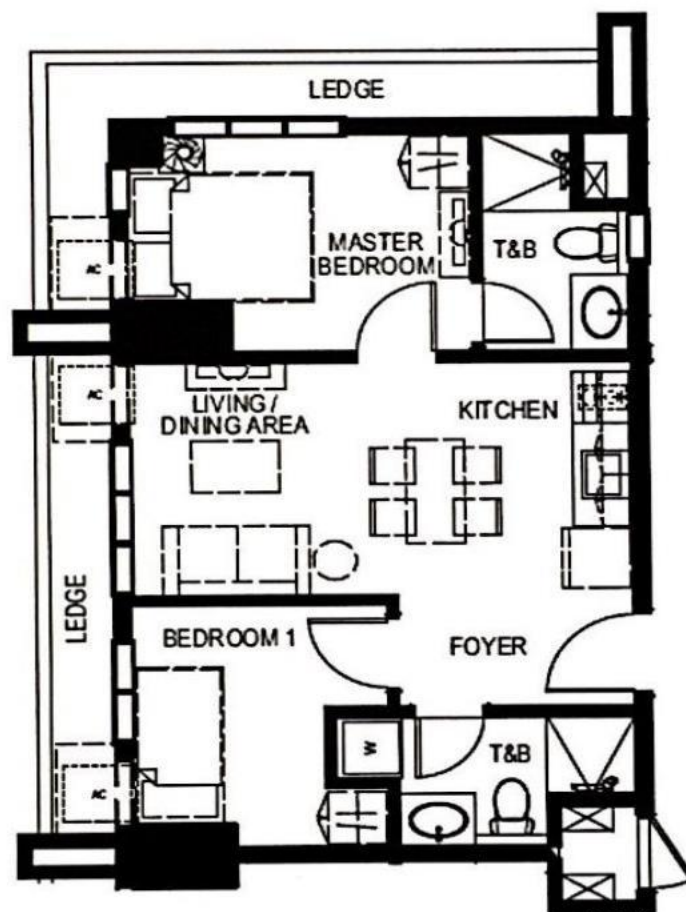
32.64 SQM
WEST RESIDENCES
Unit 06

These renderings are based on the architect's perspective and do not form part of an offer or contract. Selling price is established principally on a per unit basis and not on the unit measurement or dimension. Empire East reserves the right to modify these illustrations without prior notice. Clients are invited to verify subsequent changes.

As of January 2014. For reference and presentation purposes only.

TYPICAL LEVEL- UNIT LAYOUT

TWO BEDROOM SUITES



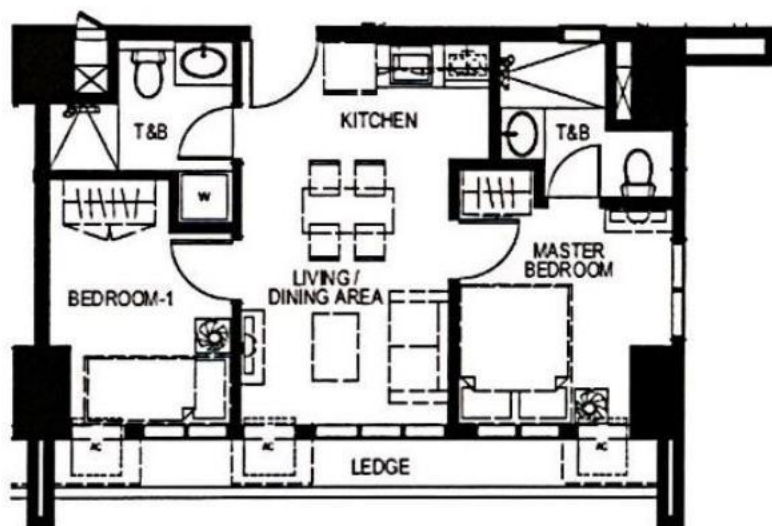
46.49 SQM

WEST RESIDENCES
Unit 02

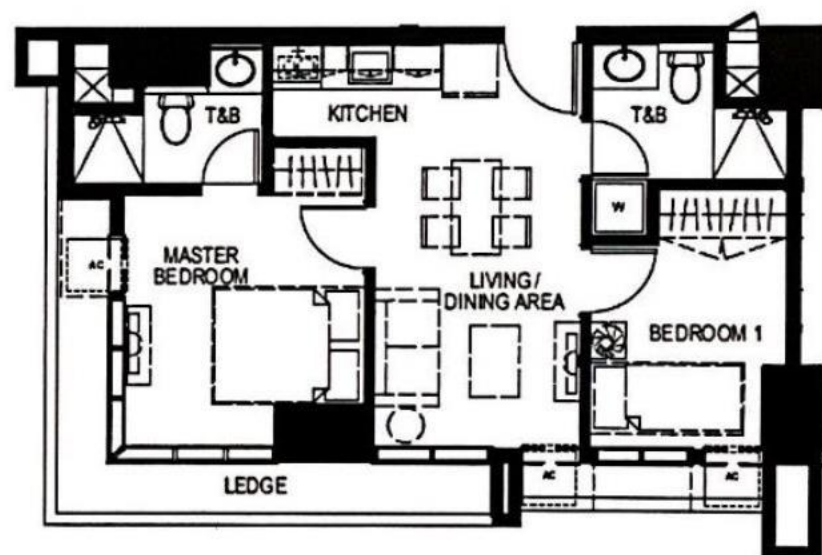
EAST RESIDENCES
Unit 02

TYPICAL LEVEL- UNIT LAYOUT

TWO BEDROOM SUITES



46.69 SQM
EAST RESIDENCES
Unit 04



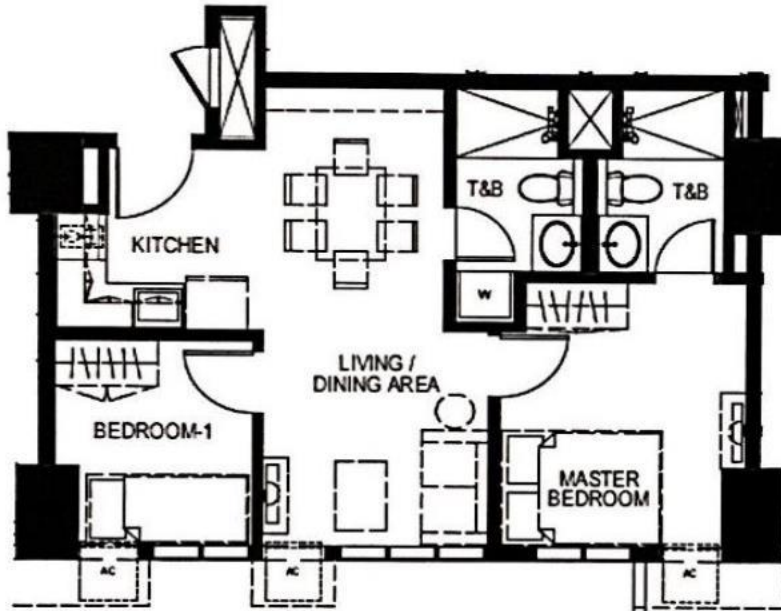
48.05 SQM
WEST RESIDENCES
Unit 04

These renderings are based on the architect's perspective and do not form part of an offer or contract. Selling price is established principally on a per unit basis and not on the unit measurement or dimension. Empire East reserves the right to modify these illustrations without prior notice. Clients are invited to verify subsequent changes.

As of January 2014. For reference and presentation purposes only.

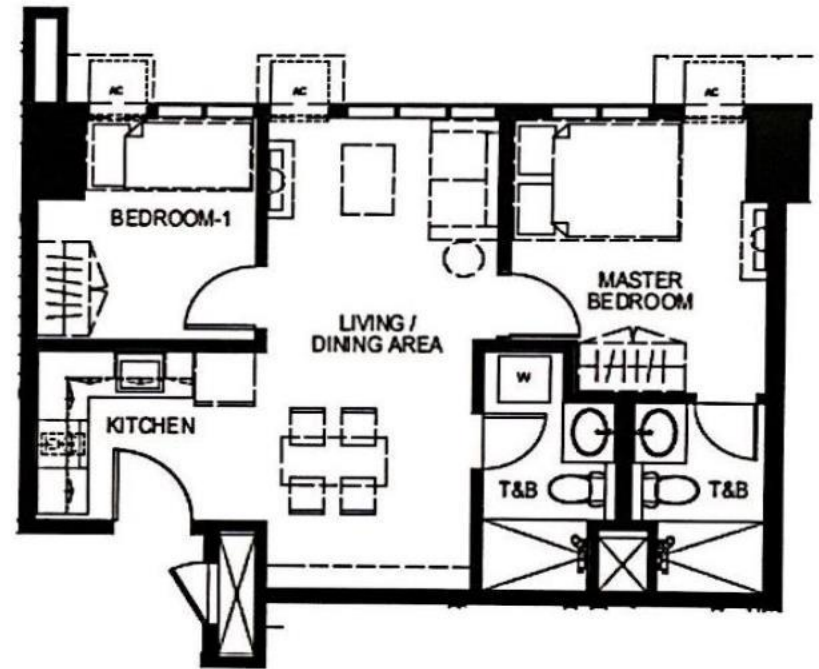
TYPICAL LEVEL- UNIT LAYOUT

TWO BEDROOM SUITES



50.41 SQM
WEST RESIDENCES
Unit 07

EAST RESIDENCES
Unit 07



51.49 SQM
WEST RESIDENCES
Unit 08

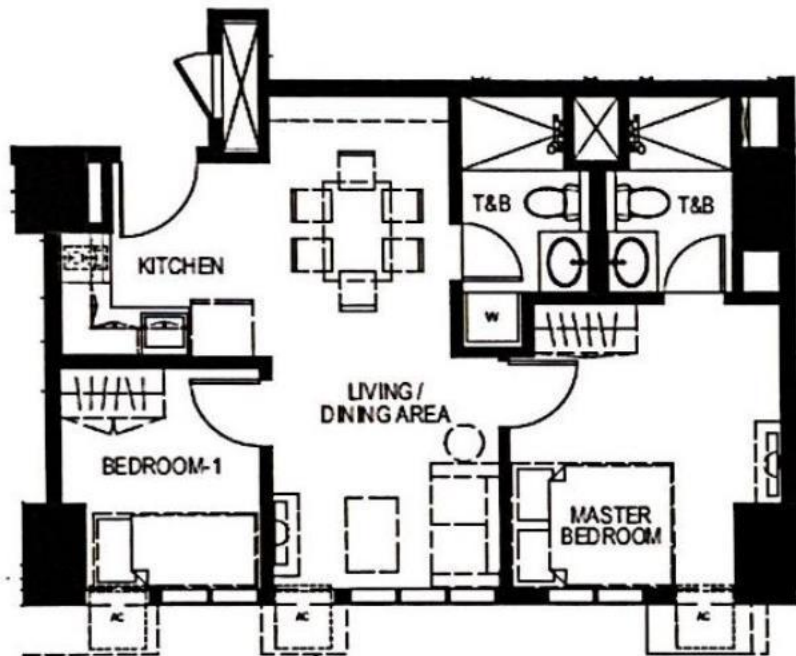
EAST RESIDENCES
Unit 08

These renderings are based on the architect's perspective and do not form part of an offer or contract. Selling price is established principally on a per unit basis and not on the unit measurement or dimension. Empire East reserves the right to modify these illustrations without prior notice. Clients are invited to verify subsequent changes.

As of January 2014. For reference and presentation purposes only.

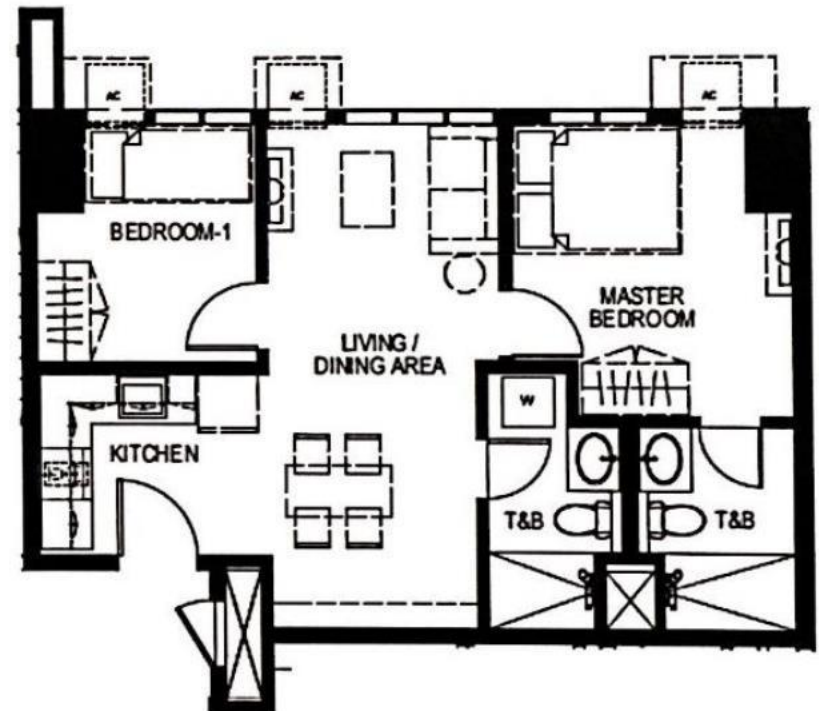
TYPICAL LEVEL- UNIT LAYOUT

TWO BEDROOM SUITES



52.69 SQM

WEST RESIDENCES (35th to 37th)
Unit 07



53.77 SQM

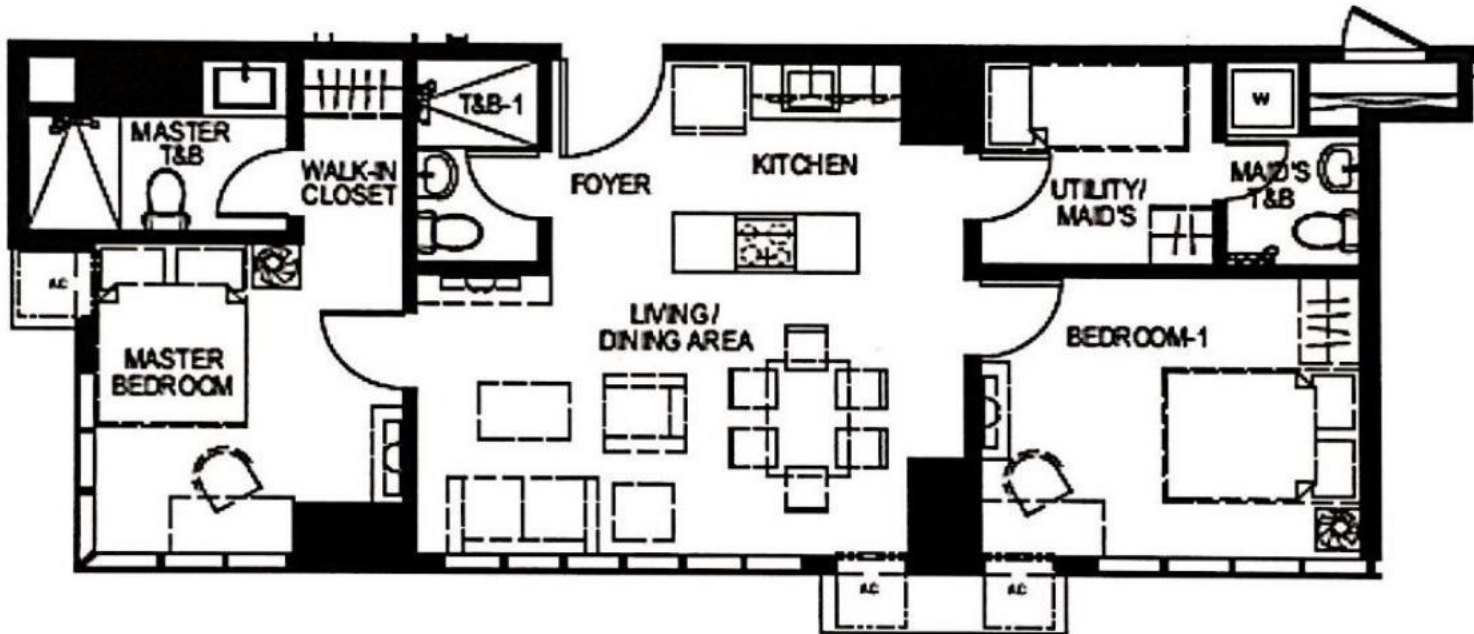
WEST RESIDENCES (35th to 37th)
Unit 08

These renderings are based on the architect's perspective and do not form part of an offer or contract. Selling price is established principally on a per unit basis and not on the unit measurement or dimension. Empire East reserves the right to modify these illustrations without prior notice. Clients are invited to verify subsequent changes.

As of January 2014. For reference and presentation purposes only.

PENTHOUSE LEVEL- UNIT LAYOUT

TWO BEDROOM SUITES



70.63 SQM

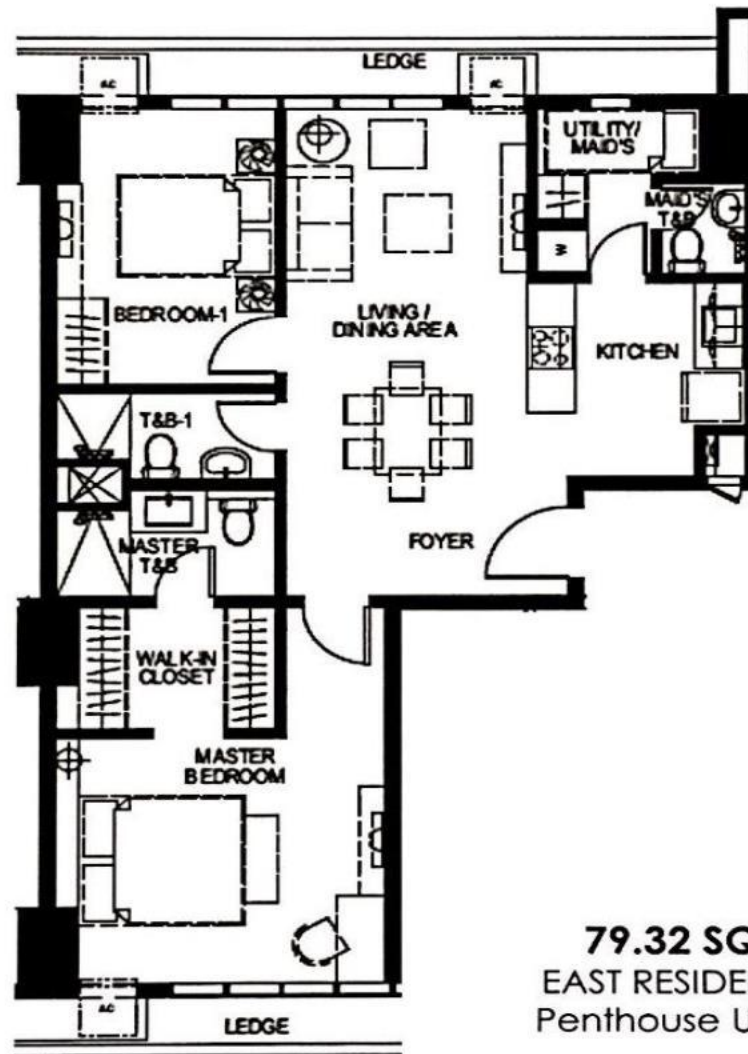
WEST RESIDENCES
Penthouse Unit 03

These renderings are based on the architect's perspective and do not form part of an offer or contract. Selling price is established principally on a per unit basis and not on the unit measurement or dimension. Empire East reserves the right to modify these illustrations without prior notice. Clients are invited to verify subsequent changes.

As of January 2014. For reference and presentation purposes only.

PENTHOUSE LEVEL- UNIT LAYOUT

TWO BEDROOM SUITES



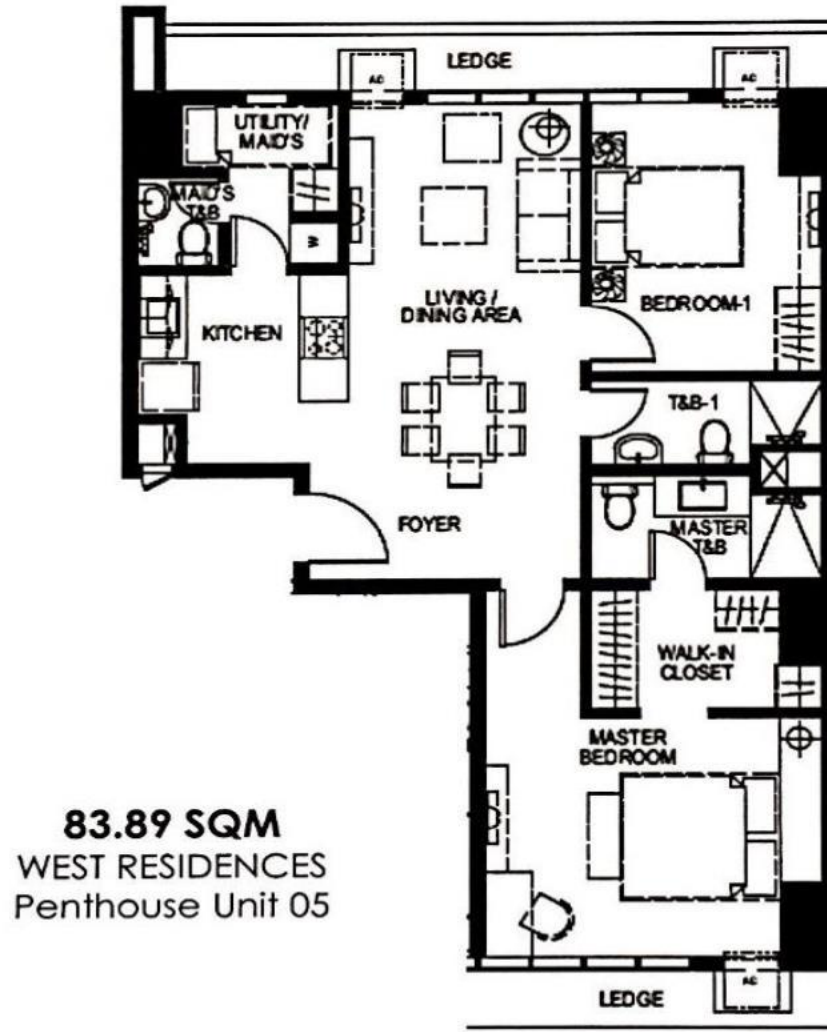
79.32 SQM
EAST RESIDENCES
Penthouse Unit 05

These renderings are based on the architect's perspective and do not form part of an offer or contract. Selling price is established principally on a per unit basis and not on the unit measurement or dimension. Empire East reserves the right to modify these illustrations without prior notice. Clients are invited to verify subsequent changes.

As of January 2014. For reference and presentation purposes only.

PENTHOUSE LEVEL- UNIT LAYOUT

TWO BEDROOM SUITES

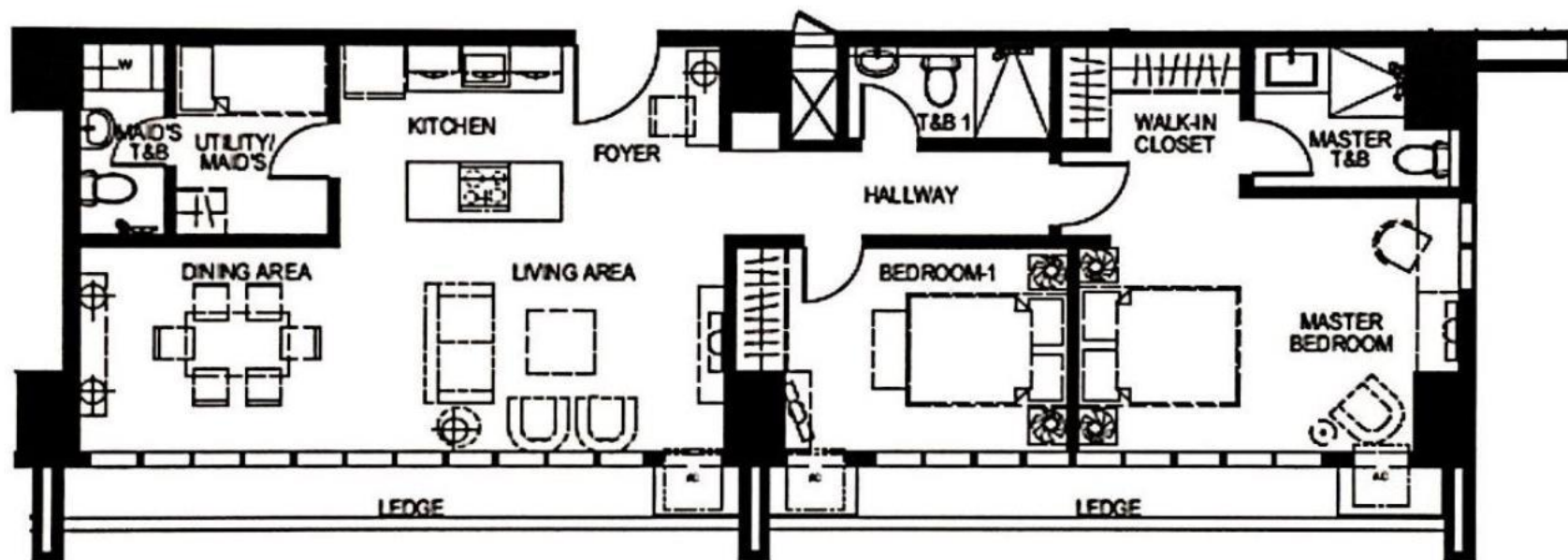


These renderings are based on the architect's perspective and do not form part of an offer or contract. Selling price is established principally on a per unit basis and not on the unit measurement or dimension. Empire East reserves the right to modify these illustrations without prior notice. Clients are invited to verify subsequent changes.

As of January 2014. For reference and presentation purposes only.

PENTHOUSE LEVEL- UNIT LAYOUT

TWO BEDROOM SUITES



90.35 SQM
EAST RESIDENCES
Penthouse Unit 03

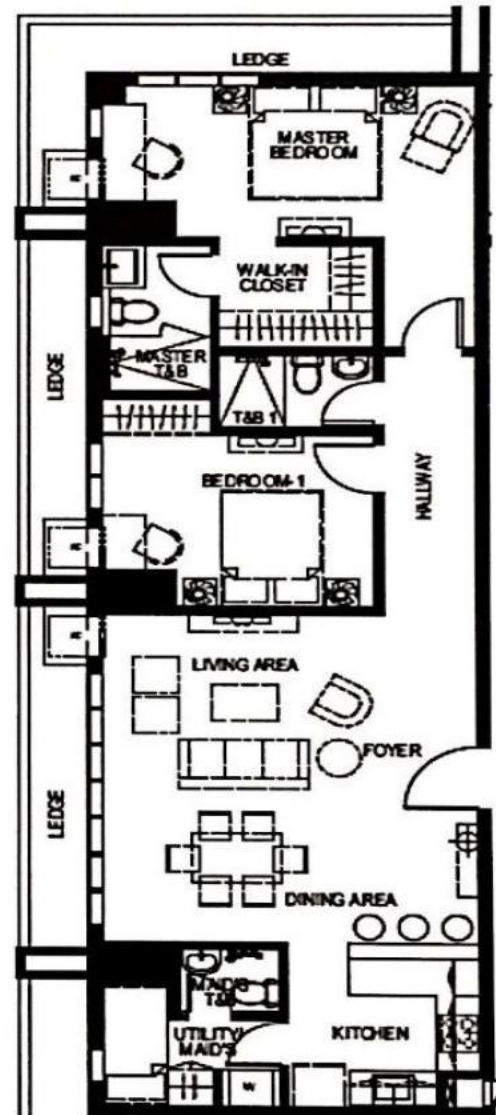
These renderings are based on the architect's perspective and do not form part of an offer or contract. Selling price is established principally on a per unit basis and not on the unit measurement or dimension. Empire East reserves the right to modify these illustrations without prior notice. Clients are invited to verify subsequent changes.

As of January 2014. For reference and presentation purposes only.

PENTHOUSE LEVEL- UNIT LAYOUT

TWO BEDROOM SUITES

92.29 SQM
WEST RESIDENCES
Penthouse Unit 02



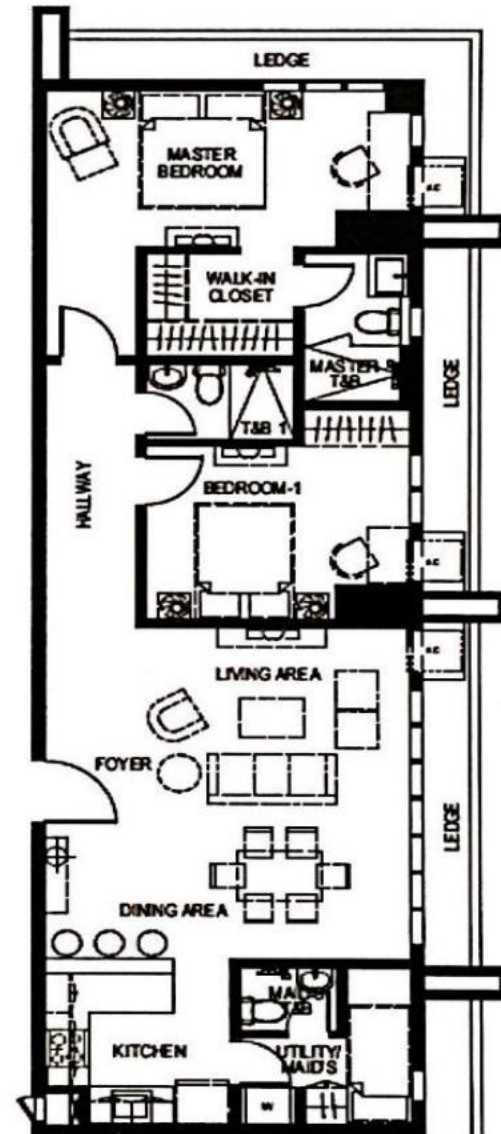
These renderings are based on the architect's perspective and do not form part of an offer or contract. Selling price is established principally on a per unit basis and not on the unit measurement or dimension. Empire East reserves the right to modify these illustrations without prior notice. Clients are invited to verify subsequent changes.

As of January 2014. For reference and presentation purposes only.

PENTHOUSE LEVEL- UNIT LAYOUT

TWO BEDROOM SUITES

92.64 SQM
EAST RESIDENCES
Penthouse Unit 02



These renderings are based on the architect's perspective and do not form part of an offer or contract. Selling price is established principally on a per unit basis and not on the unit measurement or dimension. Empire East reserves the right to modify these illustrations without prior notice. Clients are invited to verify subsequent changes.

As of January 2014. For reference and presentation purposes only.



another prestigious project of

