



EMPIRE EAST
HIGHLAND CITY

EMPIRE EAST HIGHLAND CITY

Luxurious Uphill Community in the East

Reinvent the way you live in this 24-hectare mixed-use development that is set to heighten the standards of eastern living. Empire East Highland City offers an elevated city concept that will soon redefine the skyline of Pasig-Cainta.

Its main entrance to the property is located along Felix Avenue in Cainta, which also serves as a gateway to the Green City of Pasig's business districts and the flourishing City of Cainta's tourist destinations - captivating both the fabulous city luxuries and relaxing highland ambiance.

This expansive property is divided into three phases. First, the Highland Park - an 8,000-square meter open space with sprawling greens dedicated to providing enough bonding and excitement for families. Next is the Highland Mall, a centerpiece lifestyle mall that is sure to bring a sophisticated shopping experience to everyone. And, lastly, the Highland Residences, composed of 38 high-rise residential towers that will offer panoramic views of its surrounding areas, as well as a secured home in the city.



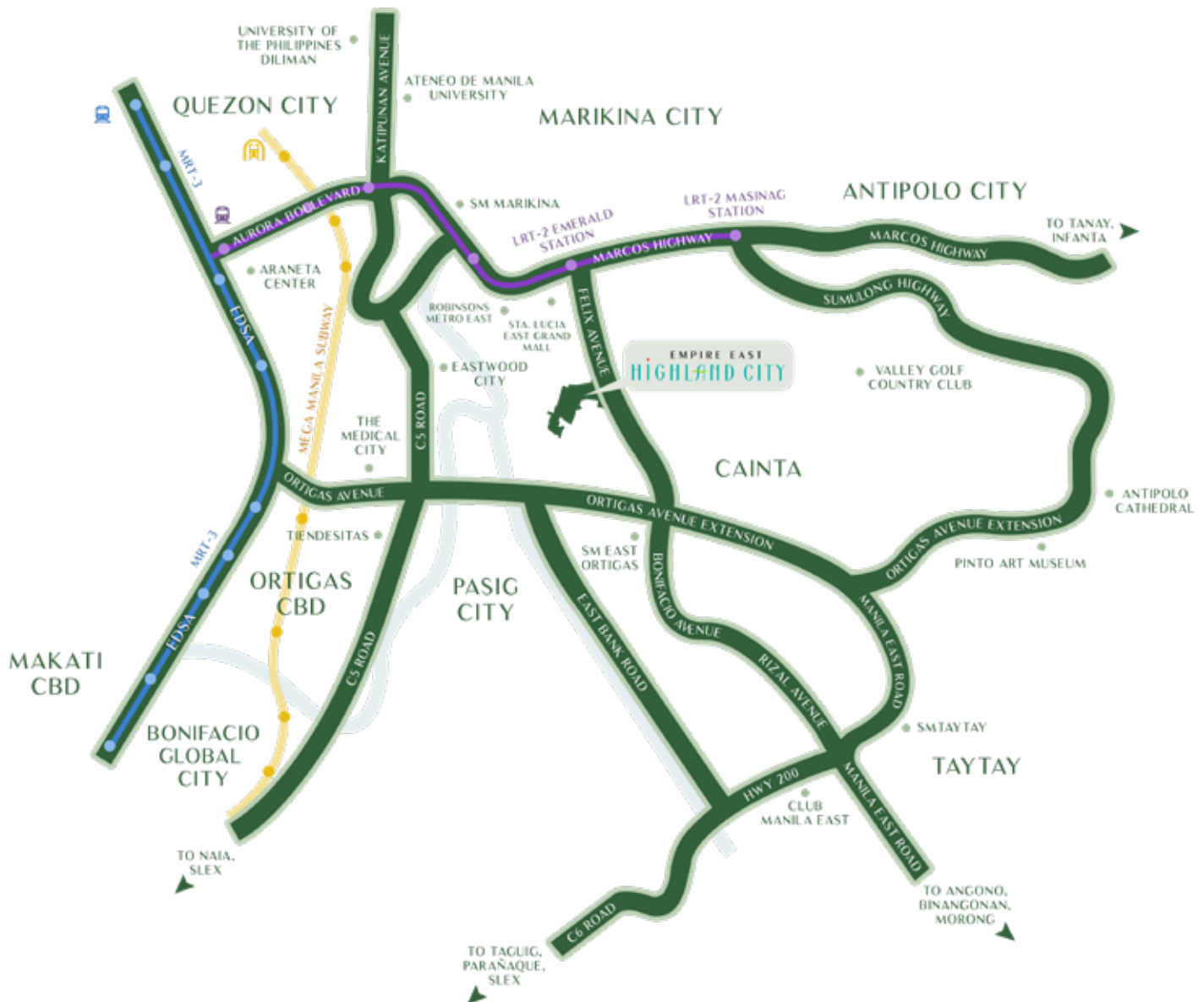
EMPIRE EAST
HIGHLAND CITY



As of April 2019.
Details are subject to change without prior notice.
For reference and presentation purposes only.

EMPIRE EAST HIGHLAND CITY

LOCATION MAP AND LANDMARKS



These renderings are based on the architect's perspective and do not form part of an offer or contract. Selling price is established principally on a per unit basis and not on the unit measurement or dimension. Empire East reserves the right to modify these illustrations without prior notice. Clients are invited to verify subsequent changes. As of April 2019. For reference and presentation purposes only.

PROJECT MASTER PLAN



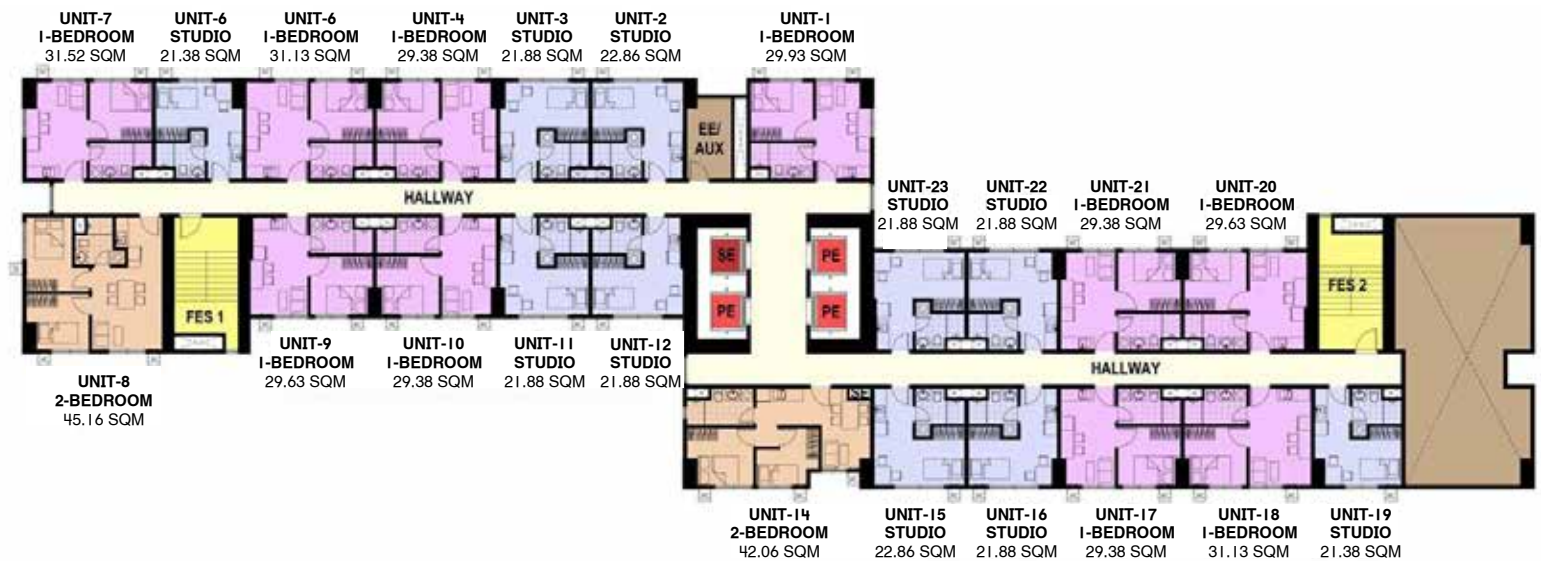
These renderings are based on the architect's perspective and do not form part of an offer or contract. Selling price is established principally on a per unit basis and not on the unit measurement or dimension. Empire East reserves the right to modify these illustrations without prior notice. Clients are invited to verify subsequent changes. As of April 2019. For reference and presentation purposes only.

ARCADIA SITE DEVELOPMENT PLAN



These renderings are based on the architect's perspective and do not form part of an offer or contract. Selling price is established principally on a per unit basis and not on the unit measurement or dimension. Empire East reserves the right to modify these illustrations without prior notice. Clients are invited to verify subsequent changes. As of April 2019. For reference and presentation purposes only.

ARCADIA: TOWER 1 FLOOR PLAN

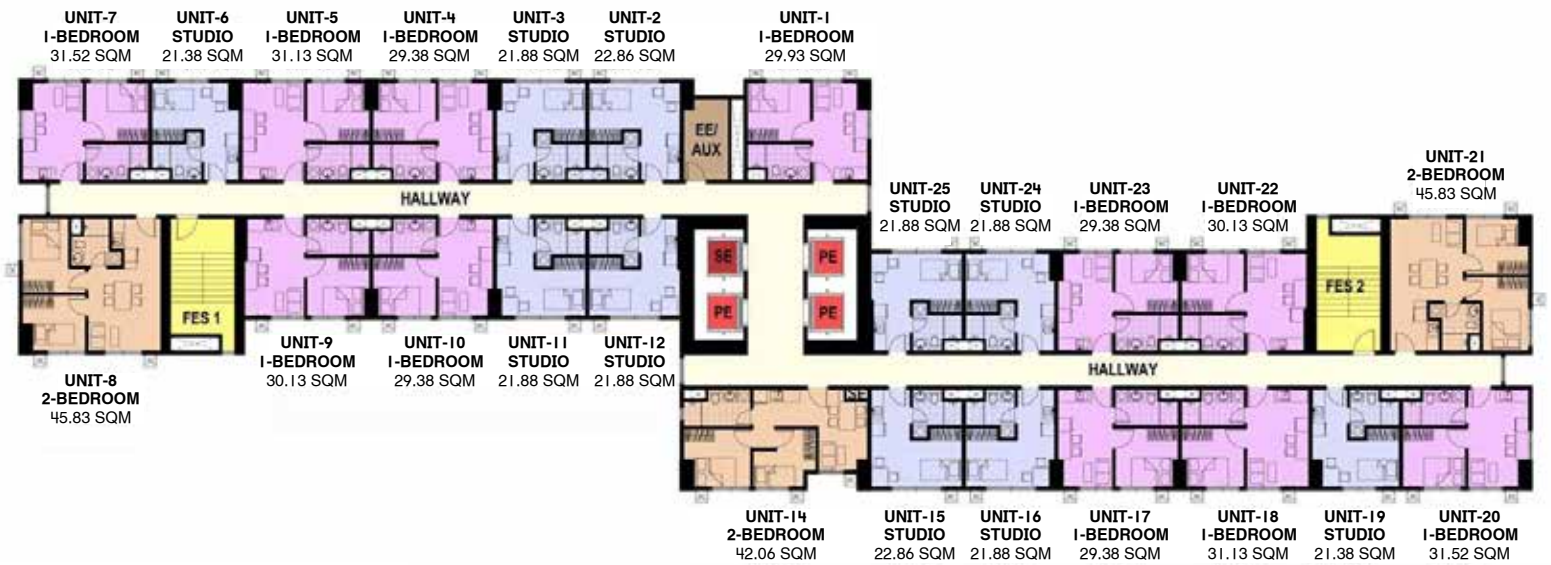


2nd Level



These renderings are based on the architect's perspective and do not form part of an offer or contract. Selling price is established principally on a per unit basis and not on the unit measurement or dimension. Empire East reserves the right to modify these illustrations without prior notice. Clients are invited to verify subsequent changes. As of April 2019. For reference and presentation purposes only.

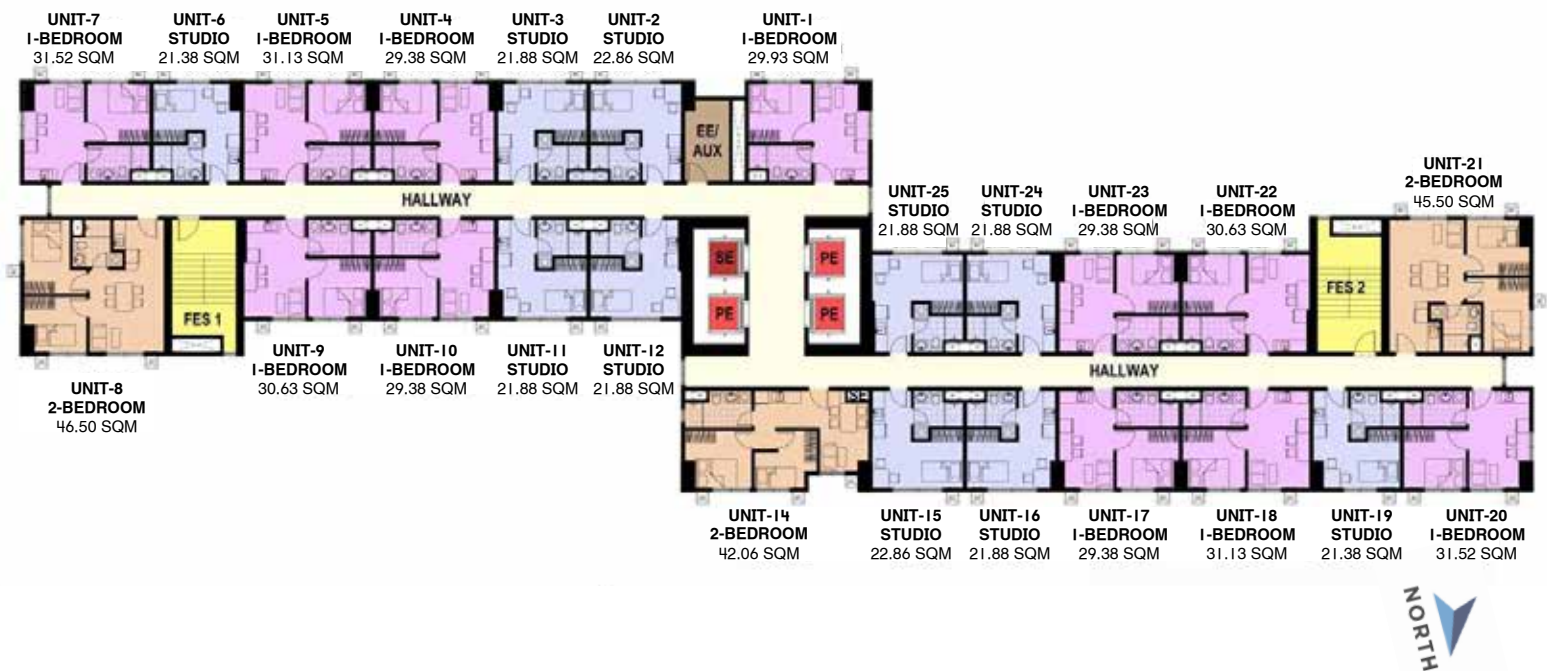
ARCADIA: TOWER 1 FLOOR PLAN



3rd to 6th Level

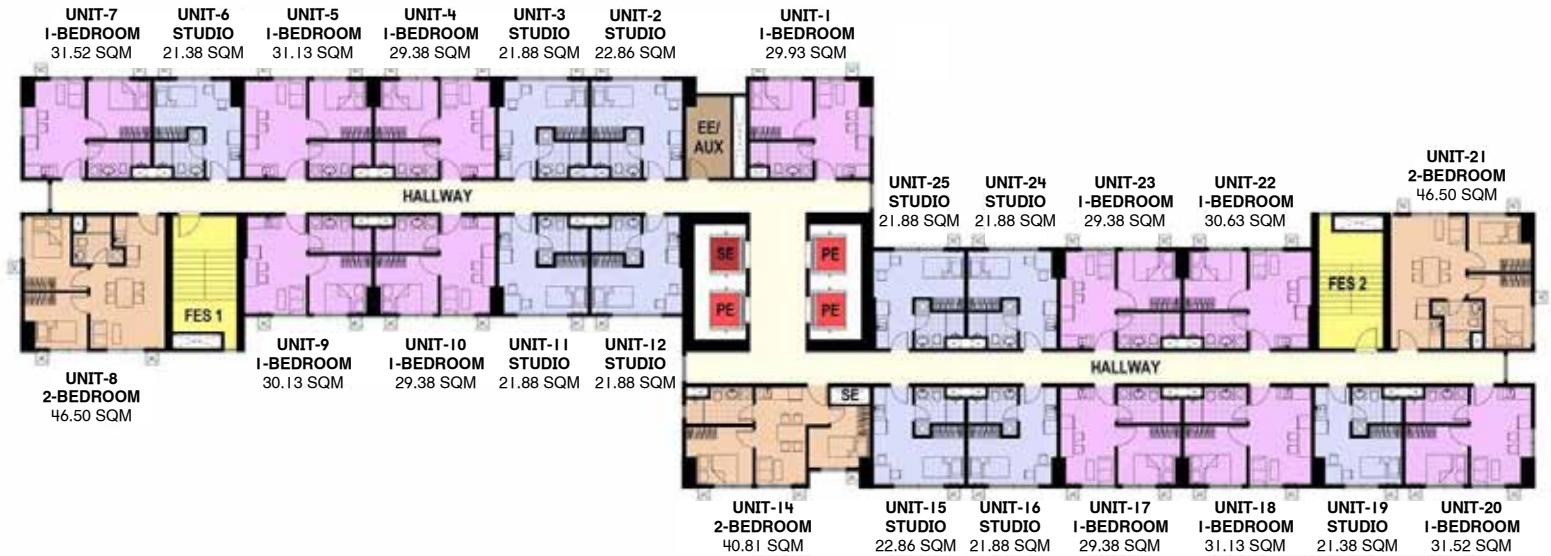
These renderings are based on the architect's perspective and do not form part of an offer or contract. Selling price is established principally on a per unit basis and not on the unit measurement or dimension. Empire East reserves the right to modify these illustrations without prior notice. Clients are invited to verify subsequent changes. As of April 2019. For reference and presentation purposes only.

ARCADIA: TOWER 1 FLOOR PLAN



7th to 9th Level
11th to 20th Level
22nd to 37th Level

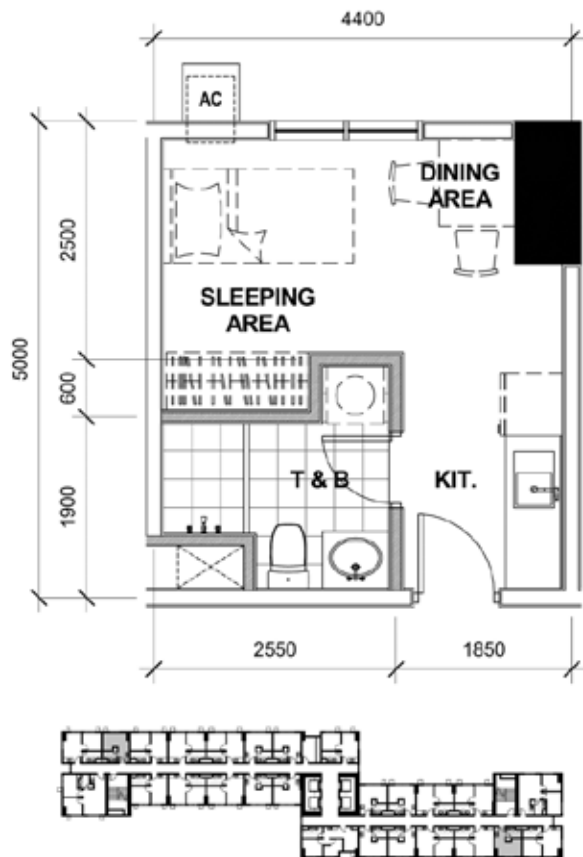
ARCADIA: TOWER 1 FLOOR PLAN



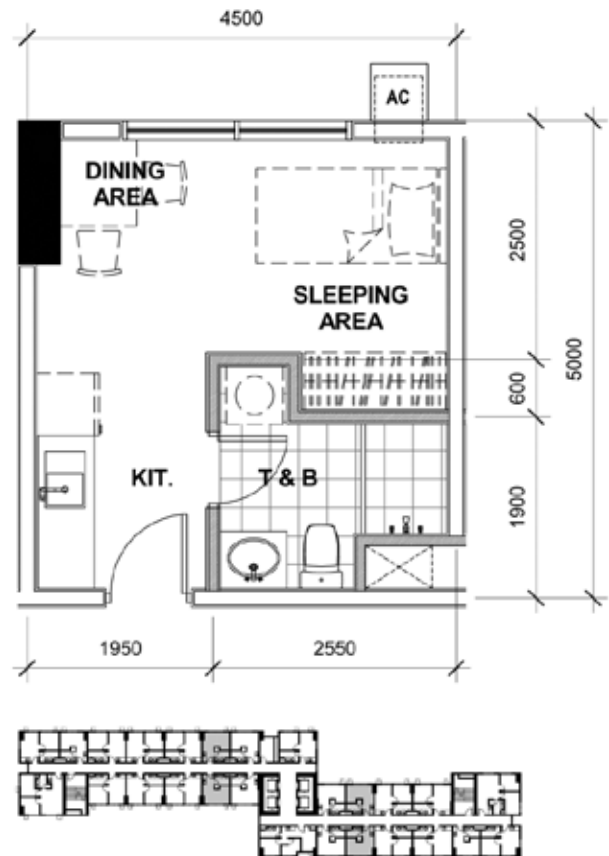
10th Level
21st Level

These renderings are based on the architect's perspective and do not form part of an offer or contract. Selling price is established principally on a per unit basis and not on the unit measurement or dimension. Empire East reserves the right to modify these illustrations without prior notice. Clients are invited to verify subsequent changes. As of April 2019. For reference and presentation purposes only.

ARCADIA: TOWER 1 - UNIT LAYOUT TYPICAL STUDIO UNITS



21.38 SQM
2nd to 37th Level
UNIT 6, 19



21.88 SQM
2nd to 37th Level
UNIT 3, 11, 16

2nd Level
UNIT 22

3rd to 37th Level
UNIT 24

These renderings are based on the architect's perspective and do not form part of an offer or contract. Selling price is established principally on a per unit basis and not on the unit measurement or dimension. Empire East reserves the right to modify these illustrations without prior notice. Clients are invited to verify subsequent changes. As of April 2019. For reference and presentation purposes only.

ARCADIA: TOWER 1 - UNIT LAYOUT TYPICAL STUDIO UNITS



21.88 SQM

2nd to 37th Level

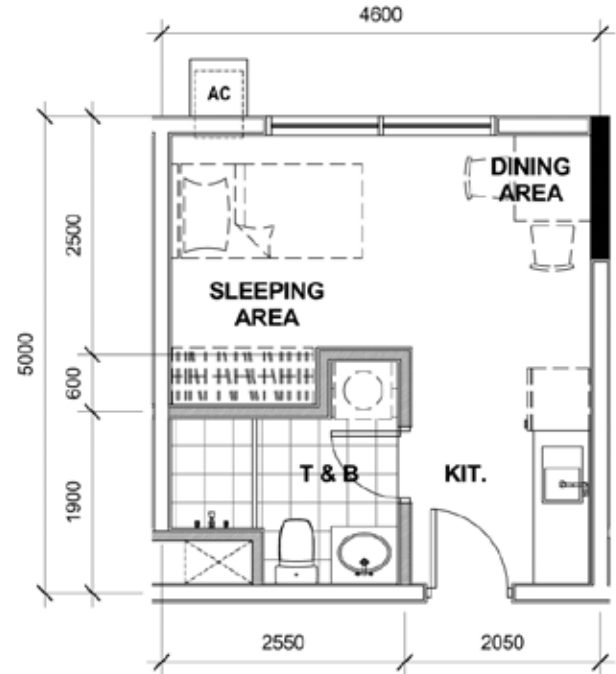
UNIT 12

2nd Level

UNIT 23

3rd to 37th Level

UNIT 25



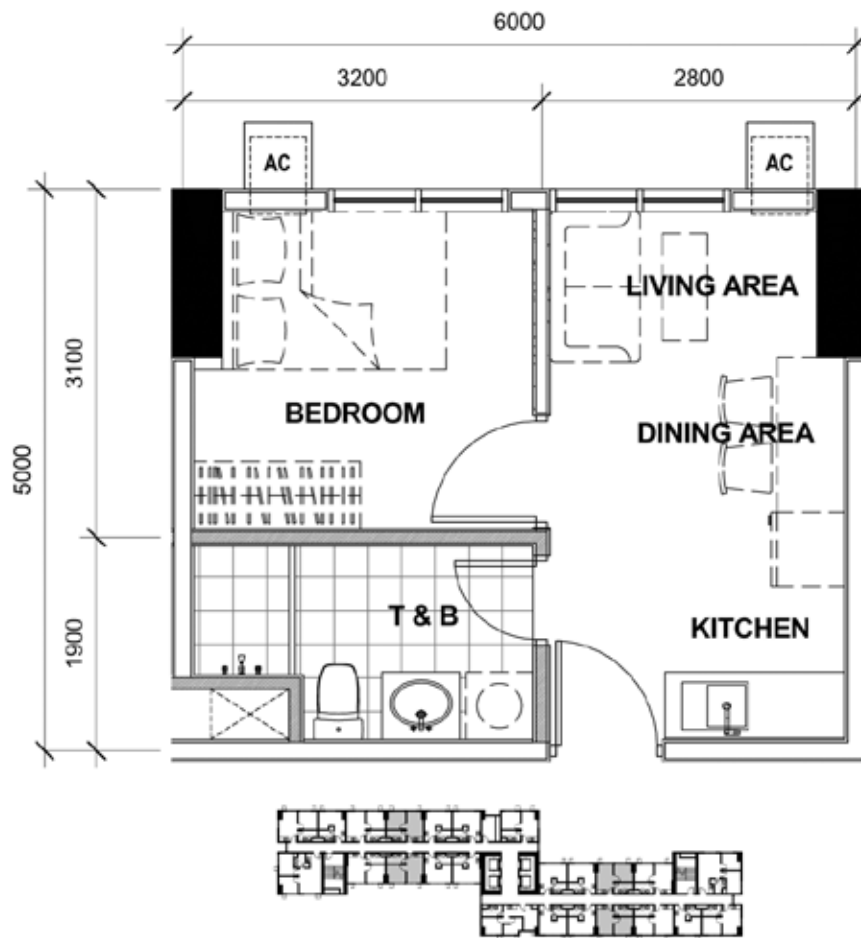
22.86 SQM

2nd to 37th Level

UNIT 2, 15

These renderings are based on the architect's perspective and do not form part of an offer or contract. Selling price is established principally on a per unit basis and not on the unit measurement or dimension. Empire East reserves the right to modify these illustrations without prior notice. Clients are invited to verify subsequent changes. As of April 2019. For reference and presentation purposes only.

ARCADIA: TOWER 1 - UNIT LAYOUT TYPICAL ONE BEDROOM UNIT



29.38 SQM

2nd Level

UNIT 21

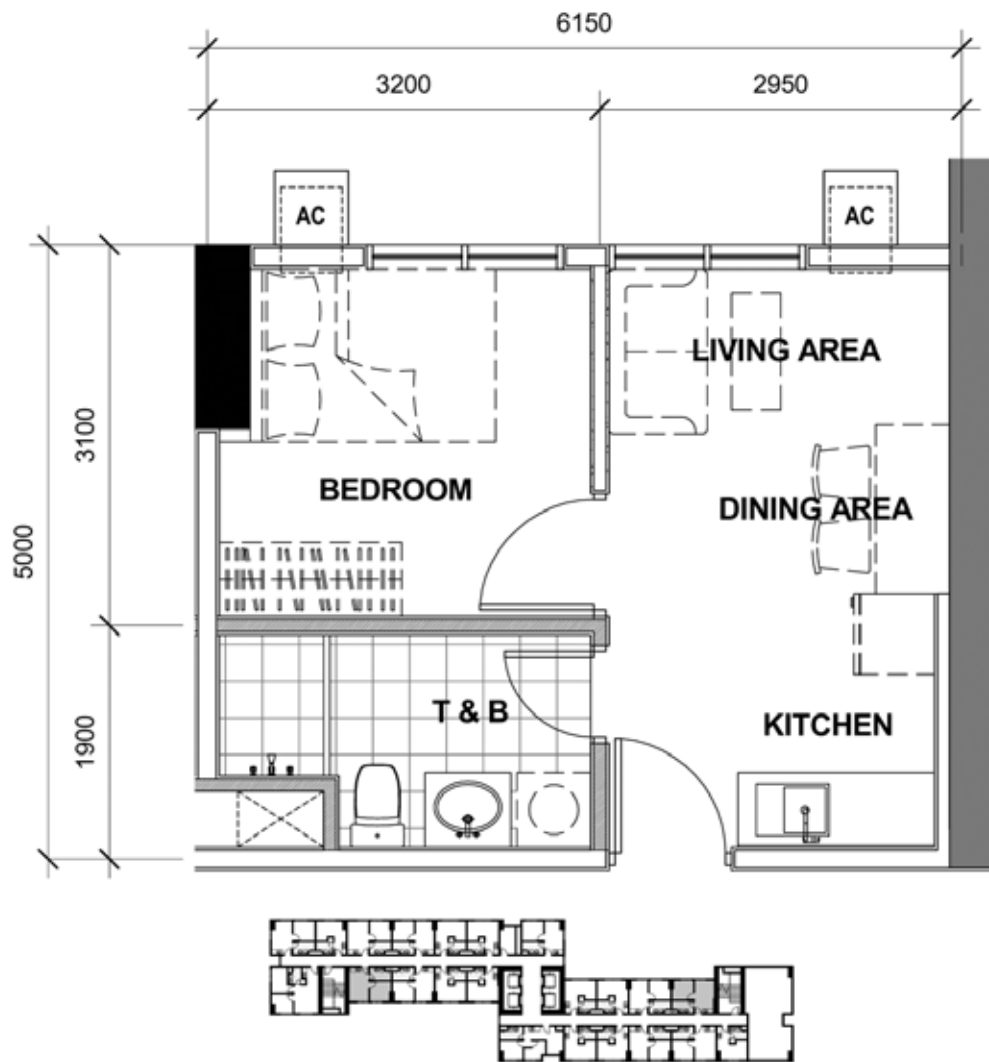
3rd to 37th Level

UNIT 23

2nd to 37th Level

UNIT 4, 10, 17

ARCADIA: TOWER 1 - UNIT LAYOUT TYPICAL ONE BEDROOM UNIT



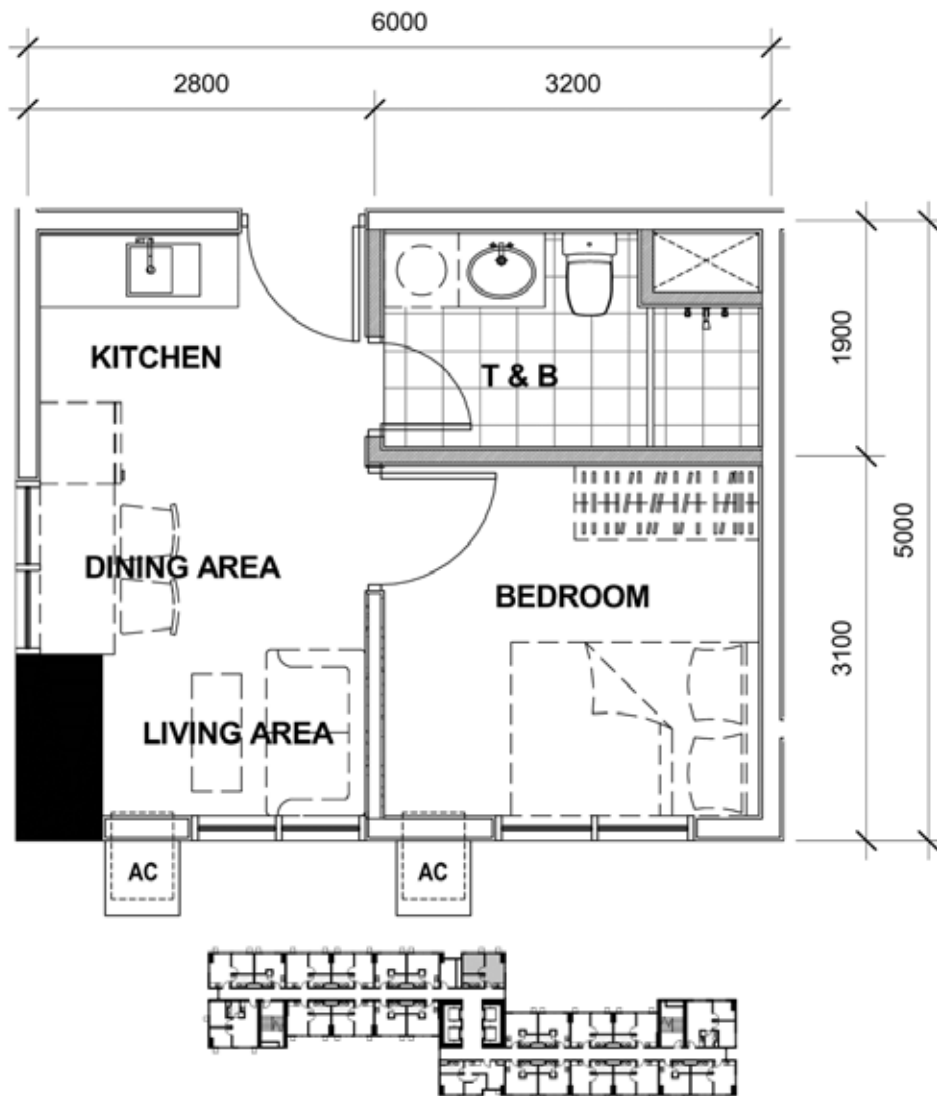
29.63 SQM

2nd Level

UNIT 9, 20

These renderings are based on the architect's perspective and do not form part of an offer or contract. Selling price is established principally on a per unit basis and not on the unit measurement or dimension. Empire East reserves the right to modify these illustrations without prior notice. Clients are invited to verify subsequent changes. As of April 2019. For reference and presentation purposes only.

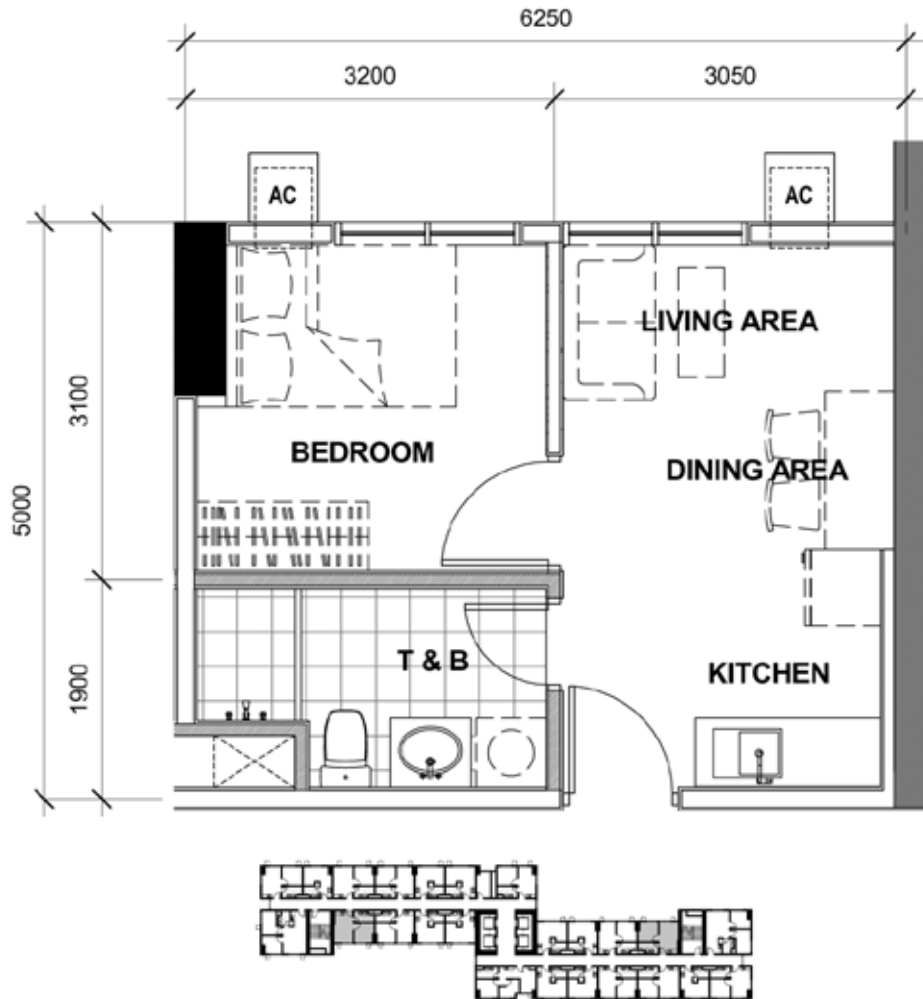
ARCADIA: TOWER 1 - UNIT LAYOUT TYPICAL ONE BEDROOM UNIT



29.93 SQM
2nd to 37th Level
UNIT 1

These renderings are based on the architect's perspective and do not form part of an offer or contract. Selling price is established principally on a per unit basis and not on the unit measurement or dimension. Empire East reserves the right to modify these illustrations without prior notice. Clients are invited to verify subsequent changes. As of April 2019. For reference and presentation purposes only.

ARCADIA: TOWER 1 - UNIT LAYOUT TYPICAL ONE BEDROOM UNIT



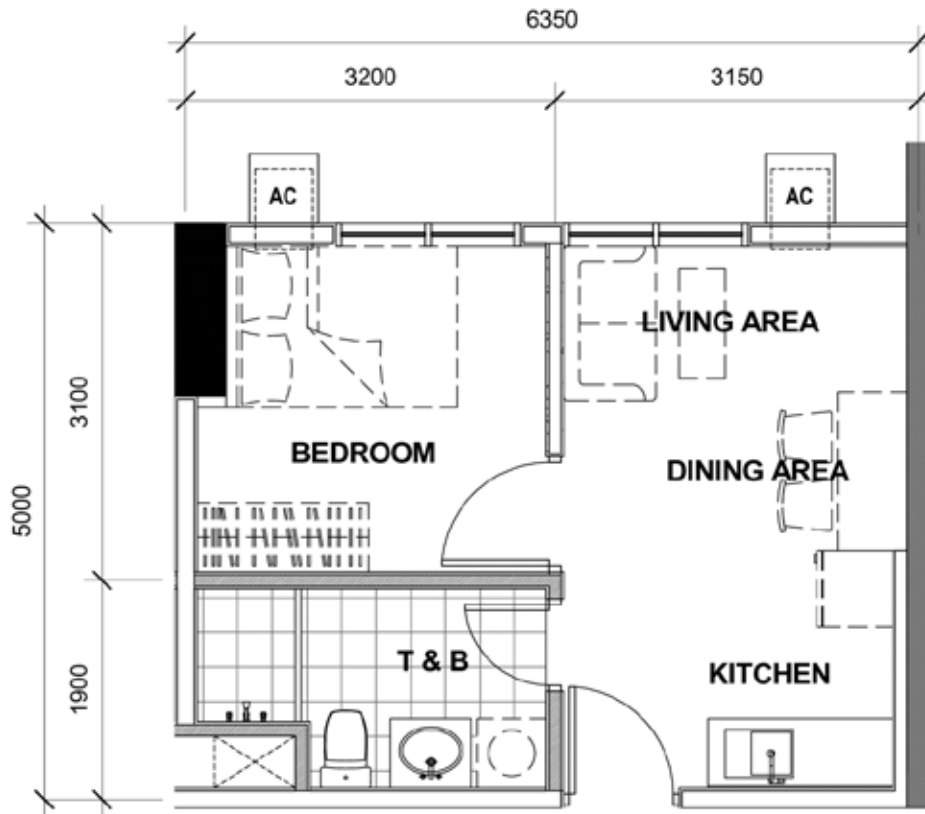
30.13 SQM

3rd to 6th Level

UNIT 9, 22

These renderings are based on the architect's perspective and do not form part of an offer or contract. Selling price is established principally on a per unit basis and not on the unit measurement or dimension. Empire East reserves the right to modify these illustrations without prior notice. Clients are invited to verify subsequent changes. As of April 2019. For reference and presentation purposes only.

ARCADIA: TOWER 1 - UNIT LAYOUT TYPICAL ONE BEDROOM UNIT



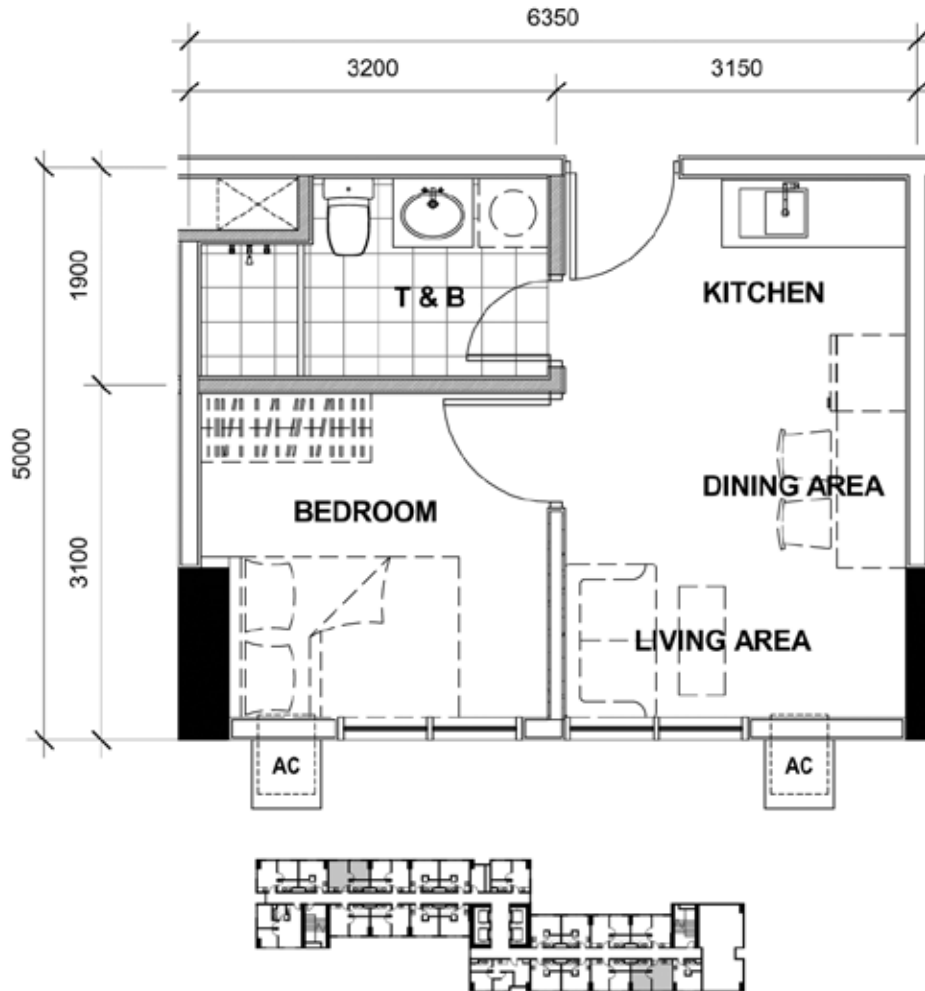
30.63 SQM

7th to 37th Level

UNIT 9, 22

These renderings are based on the architect's perspective and do not form part of an offer or contract. Selling price is established principally on a per unit basis and not on the unit measurement or dimension. Empire East reserves the right to modify these illustrations without prior notice. Clients are invited to verify subsequent changes. As of April 2019. For reference and presentation purposes only.

ARCADIA: TOWER 1 - UNIT LAYOUT TYPICAL ONE BEDROOM UNIT



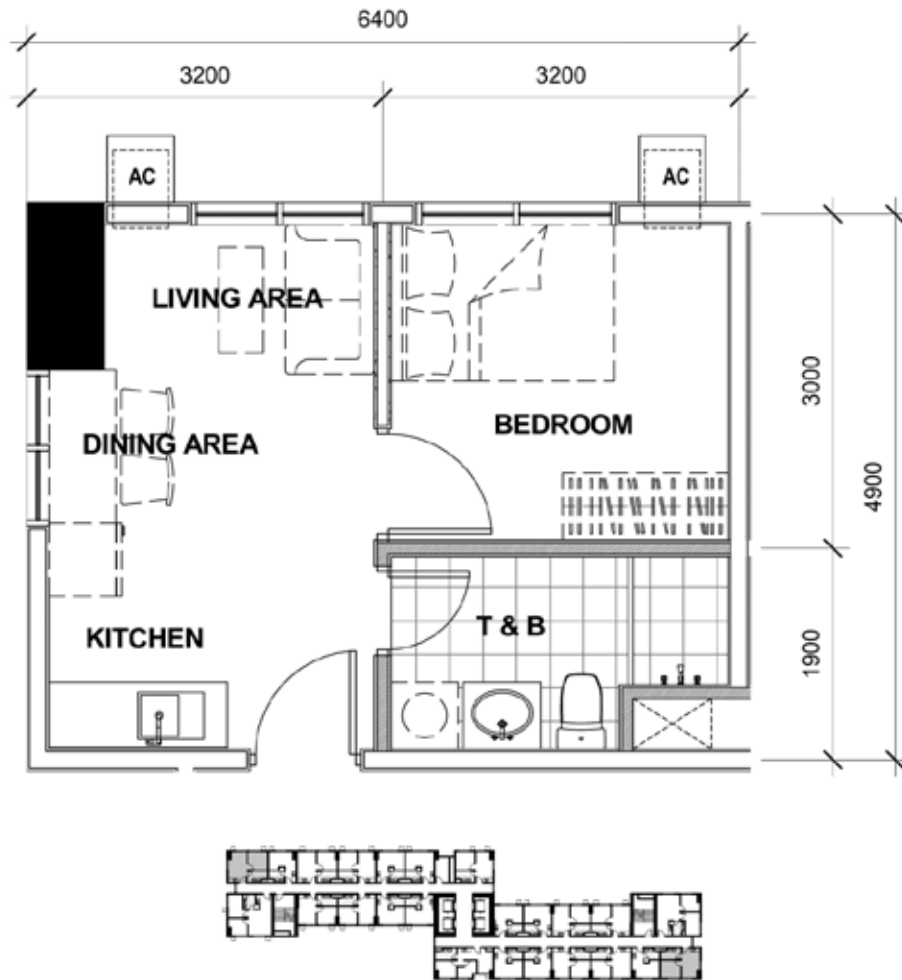
31.13 SQM

2nd to 37th Level

UNIT 5, 18

These renderings are based on the architect's perspective and do not form part of an offer or contract. Selling price is established principally on a per unit basis and not on the unit measurement or dimension. Empire East reserves the right to modify these illustrations without prior notice. Clients are invited to verify subsequent changes. As of April 2019. For reference and presentation purposes only.

ARCADIA: TOWER 1 - UNIT LAYOUT TYPICAL ONE BEDROOM UNIT



31.52 SQM

2nd to 37th Level

UNIT 7

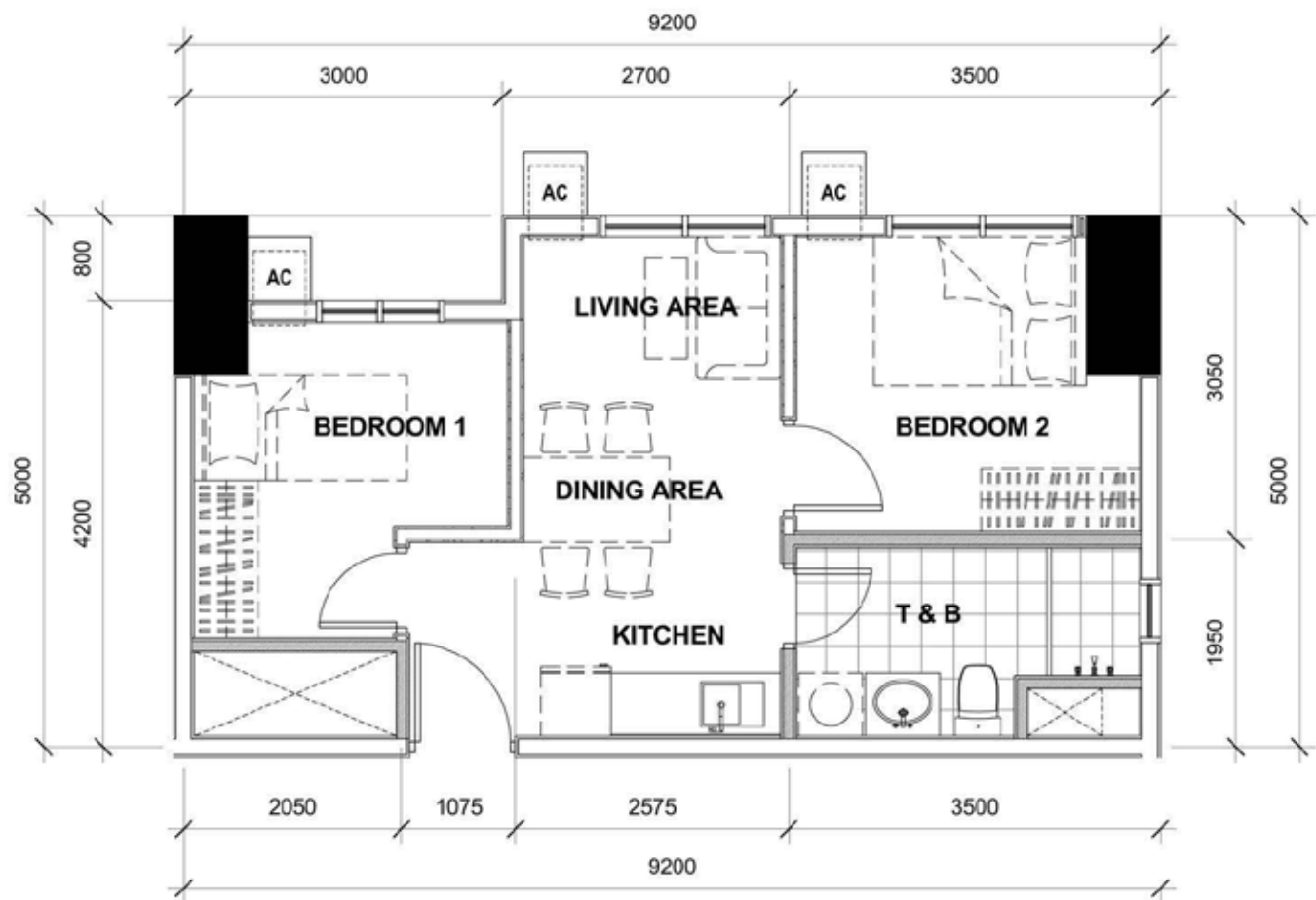
3rd to 37th Level

UNIT 20

These renderings are based on the architect's perspective and do not form part of an offer or contract. Selling price is established principally on a per unit basis and not on the unit measurement or dimension. Empire East reserves the right to modify these illustrations without prior notice. Clients are invited to verify subsequent changes.

As of April 2019. For reference and presentation purposes only.

ARCADIA: TOWER 1 - UNIT LAYOUT TYPICAL TWO BEDROOM UNIT



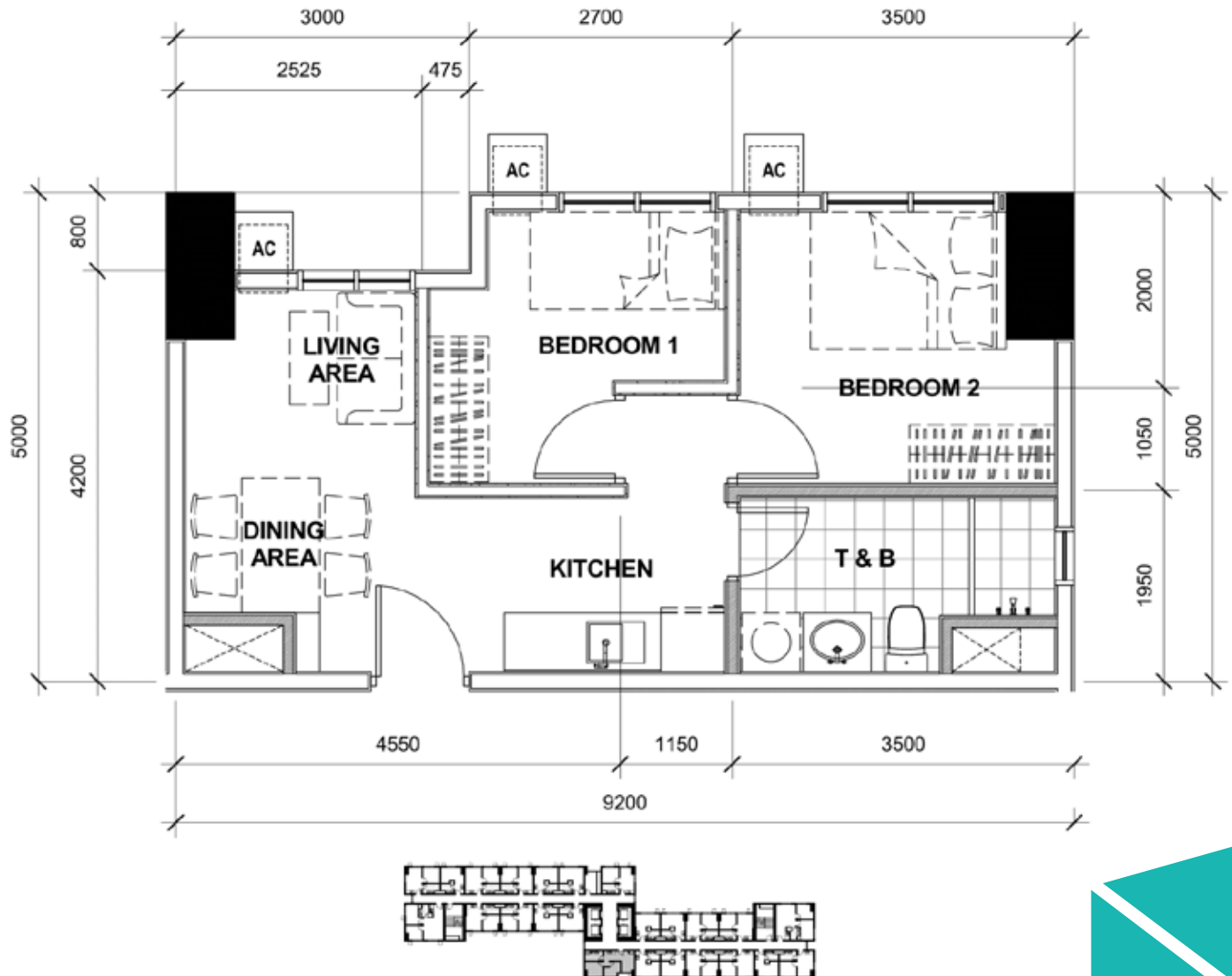
40.81 SQM

10th and 21st Level

UNIT 14

These renderings are based on the architect's perspective and do not form part of an offer or contract. Selling price is established principally on a per unit basis and not on the unit measurement or dimension. Empire East reserves the right to modify these illustrations without prior notice. Clients are invited to verify subsequent changes. As of April 2019. For reference and presentation purposes only.

ARCADIA: TOWER 1 - UNIT LAYOUT TYPICAL TWO BEDROOM UNIT



42.06 SQM

2nd to 9th Level

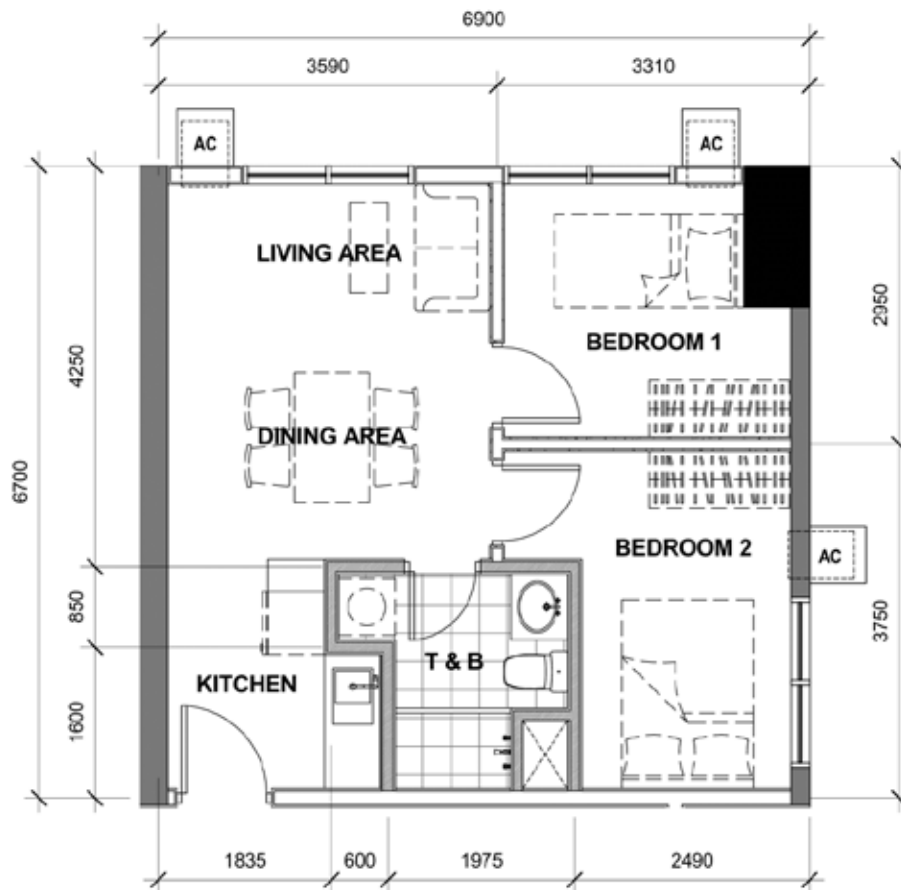
11th to 20th Level

22nd to 37th Level

UNIT 14

These renderings are based on the architect's perspective and do not form part of an offer or contract. Selling price is established principally on a per unit basis and not on the unit measurement or dimension. Empire East reserves the right to modify these illustrations without prior notice. Clients are invited to verify subsequent changes. As of April 2019. For reference and presentation purposes only.

ARCADIA: TOWER 1 - UNIT LAYOUT TYPICAL TWO BEDROOM UNIT



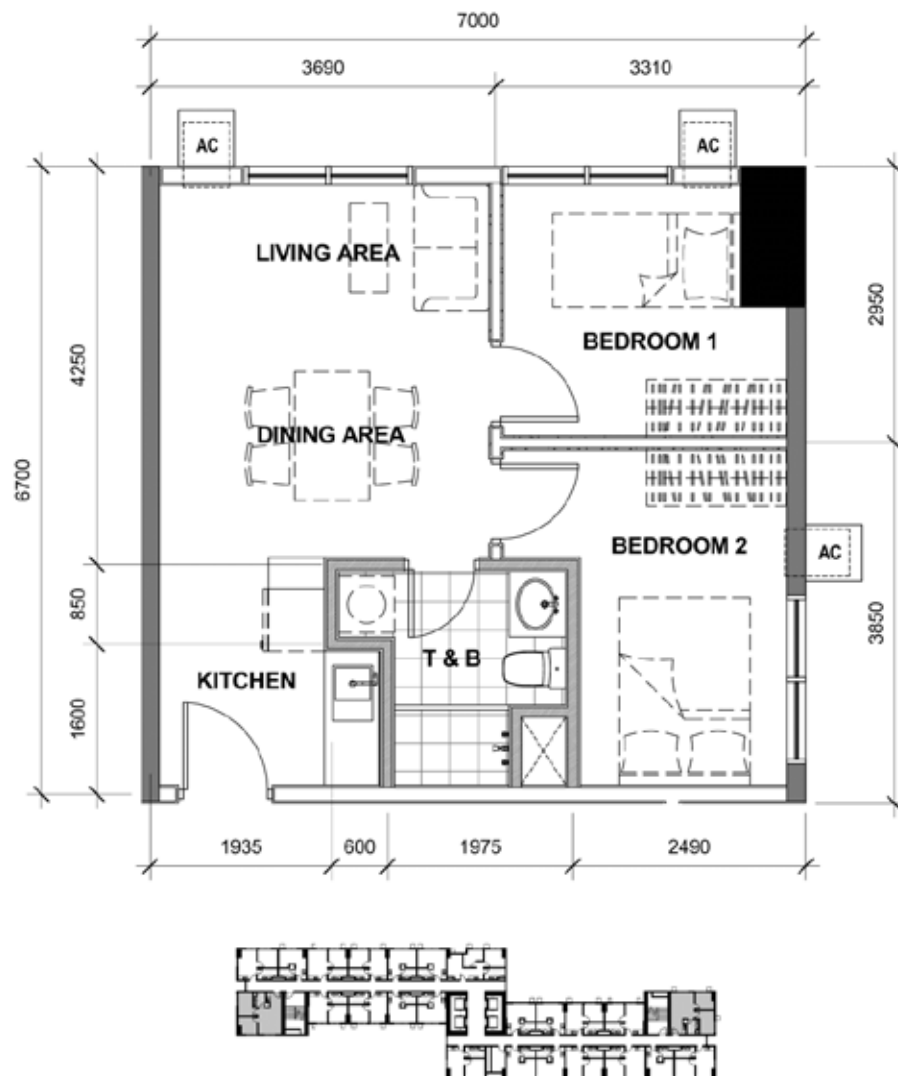
45.16 SQM

2nd Level

UNIT 8

These renderings are based on the architect's perspective and do not form part of an offer or contract. Selling price is established principally on a per unit basis and not on the unit measurement or dimension. Empire East reserves the right to modify these illustrations without prior notice. Clients are invited to verify subsequent changes. As of April 2019. For reference and presentation purposes only.

ARCADIA: TOWER 1 - UNIT LAYOUT TYPICAL TWO BEDROOM UNIT



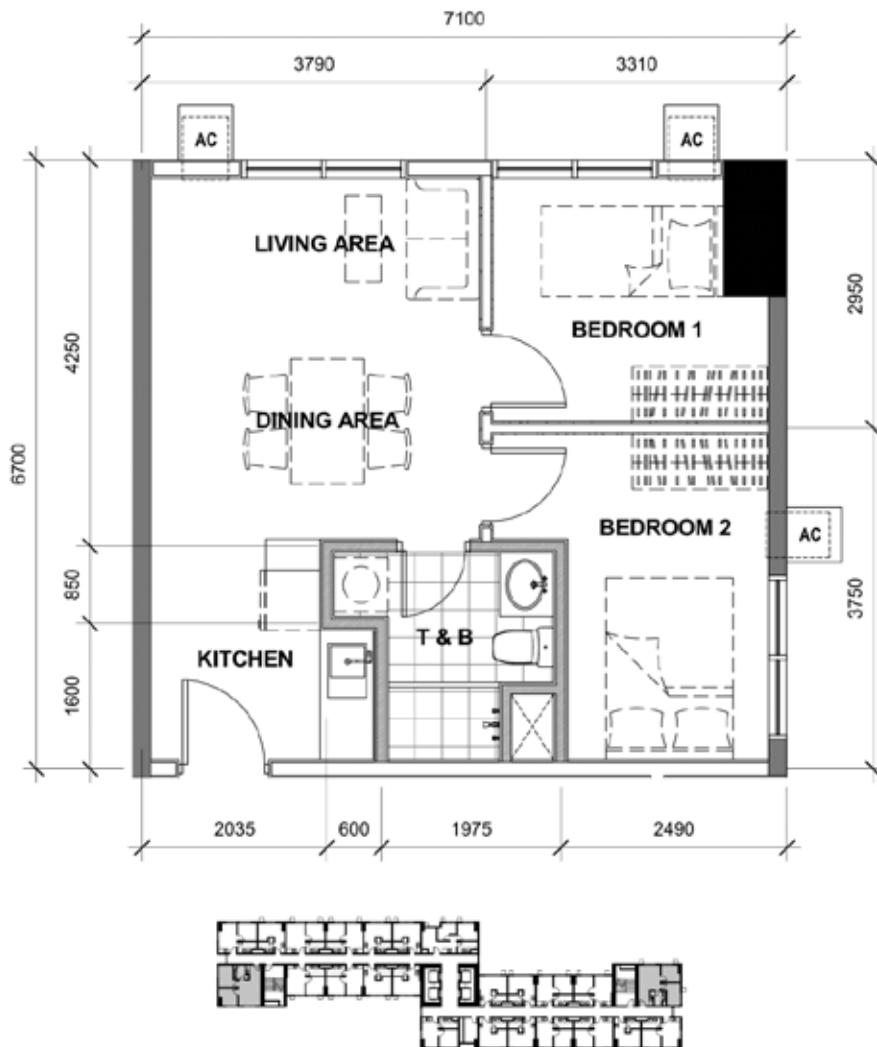
45.83 SQM

3rd to 6th Level

UNIT 8, 21

These renderings are based on the architect's perspective and do not form part of an offer or contract. Selling price is established principally on a per unit basis and not on the unit measurement or dimension. Empire East reserves the right to modify these illustrations without prior notice. Clients are invited to verify subsequent changes. As of April 2019. For reference and presentation purposes only.

ARCADIA: TOWER 1 - UNIT LAYOUT TYPICAL TWO BEDROOM UNIT



46.50 SQM

7th to 37th Level

UNIT 8, 21

These renderings are based on the architect's perspective and do not form part of an offer or contract. Selling price is established principally on a per unit basis and not on the unit measurement or dimension. Empire East reserves the right to modify these illustrations without prior notice. Clients are invited to verify subsequent changes. As of April 2019. For reference and presentation purposes only.

EMPIRE EAST
HIGHLAND CITY





Empire East

12th Floor Alliance Global Tower, 36th St. corner 11th Ave.
1634 Uptown Bonifacio, Taguig City
Tel: (632) 554 - 4800