

EMPIRE EAST

KASARA

**Eagle St. and P.E. Antonio, Brgy.
Ugong, Pasig City**



**MEGAWORLD
INTERNATIONAL**





WHY PASIG CITY?

- **Accessibility to key cities**
(Makati City, Quezon City, Mandaluyong, and Taguig City)
- **Known as “Green City”**
sustainable city doing clean air and safe water initiatives
- **Home to reputable educational & health institutions**



TOTAL LAND AREA: 1.8 has

SIX (6) HIGH RISE TOWERS

TURNOVER UPDATE:

Tower 1: RFO

Tower 2: RFO

Tower 3: RFO

Tower 4: DECEMBER 2028

Tower 5: DECEMBER 2025

Tower 6: DECEMBER 2028

LOCATION MAP



BUSINESS AND COMMERCE

Ortigas CBD (1.65 KM)

BGC (4.67 KM)

Tiendesitas (0.27 KM)

Arcovia City (3.5KM)

Eastwood City (3.5 KM)

SCHOOLS

University of Asia & the Pacific (1.93 KM)

St. Paul College Pasig(2 KM)

Reedley International School (0.33 KM)

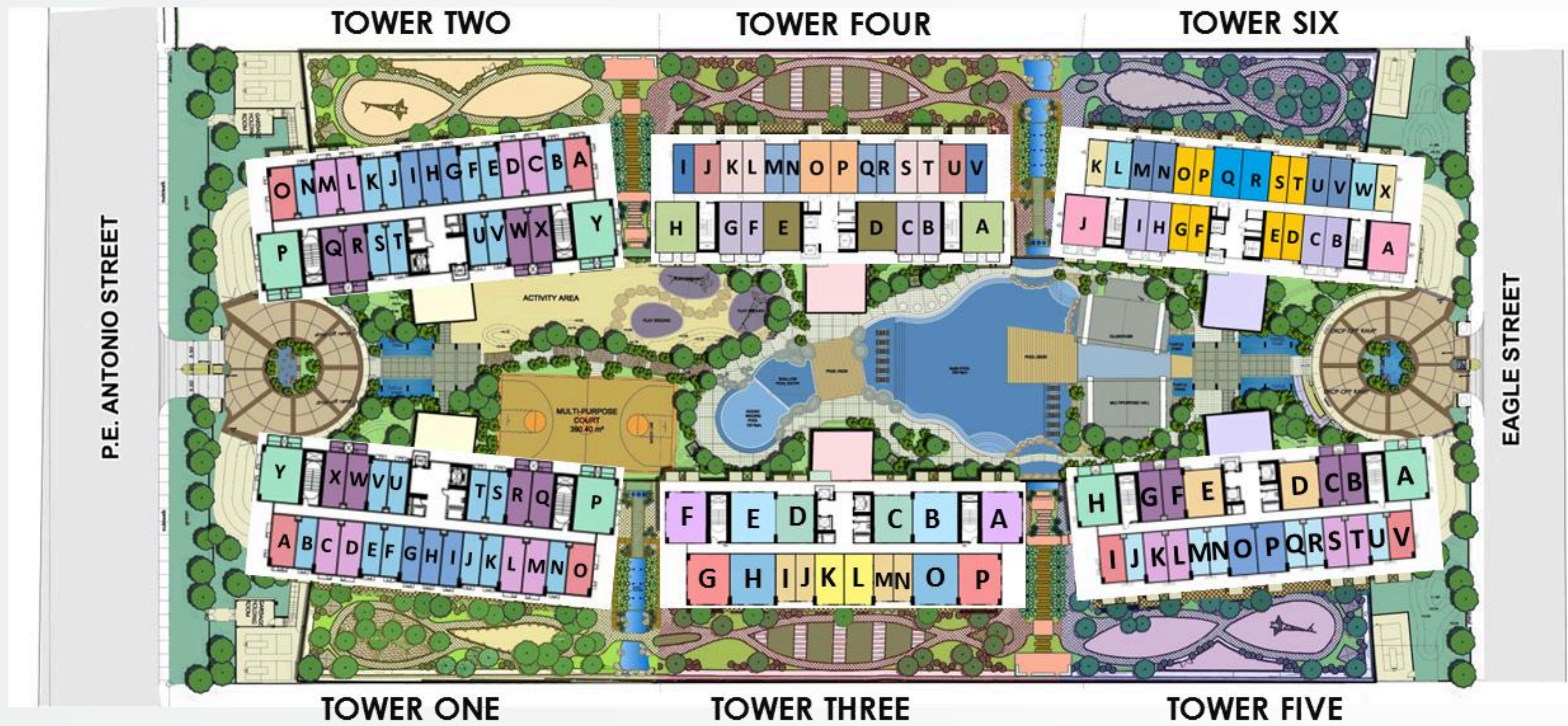
HOSPITALS

Medical City (1.26 KM),

Rizal Medical Center (2.41 KM)

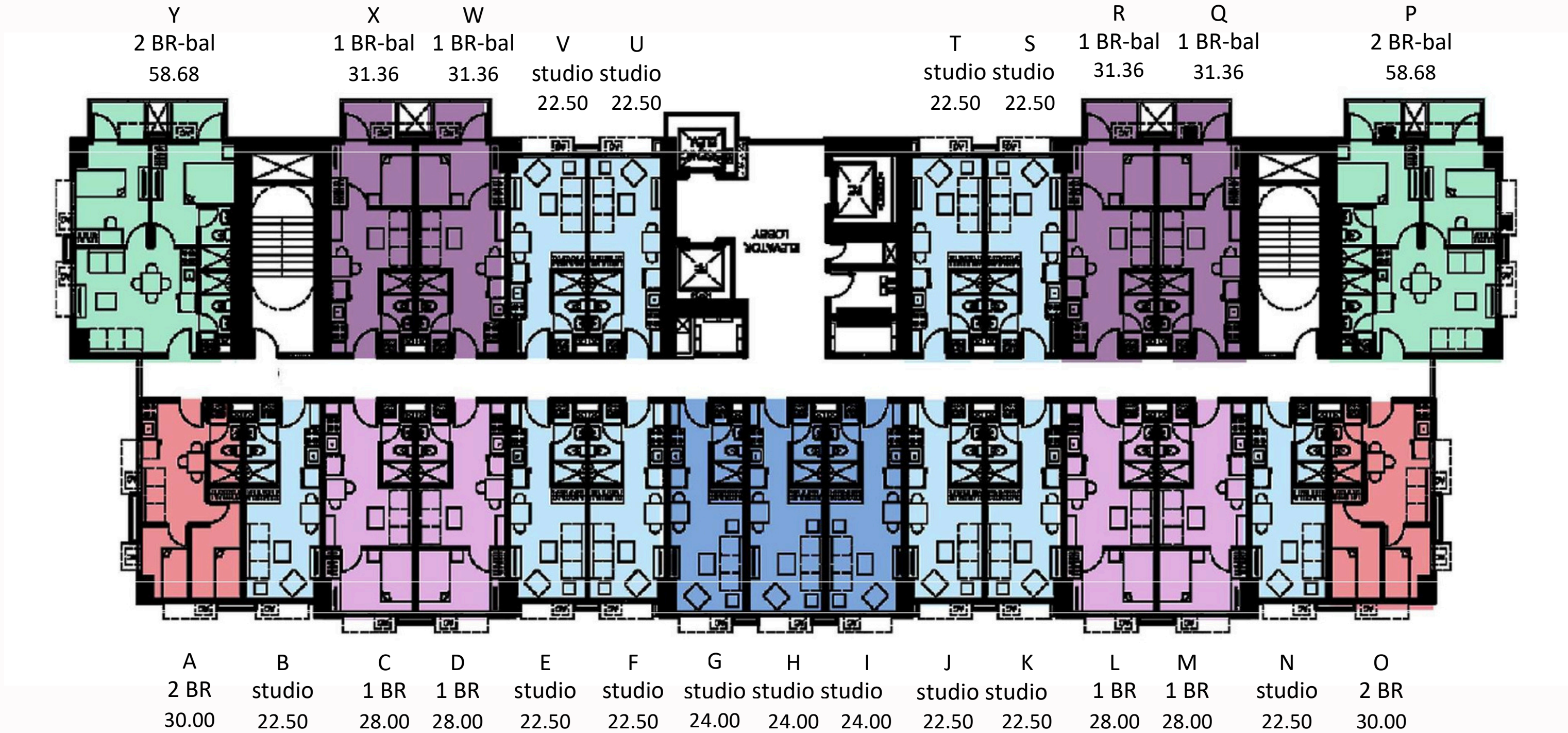


Site Development Plan

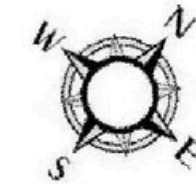


Floor Plan

TOWER ONE

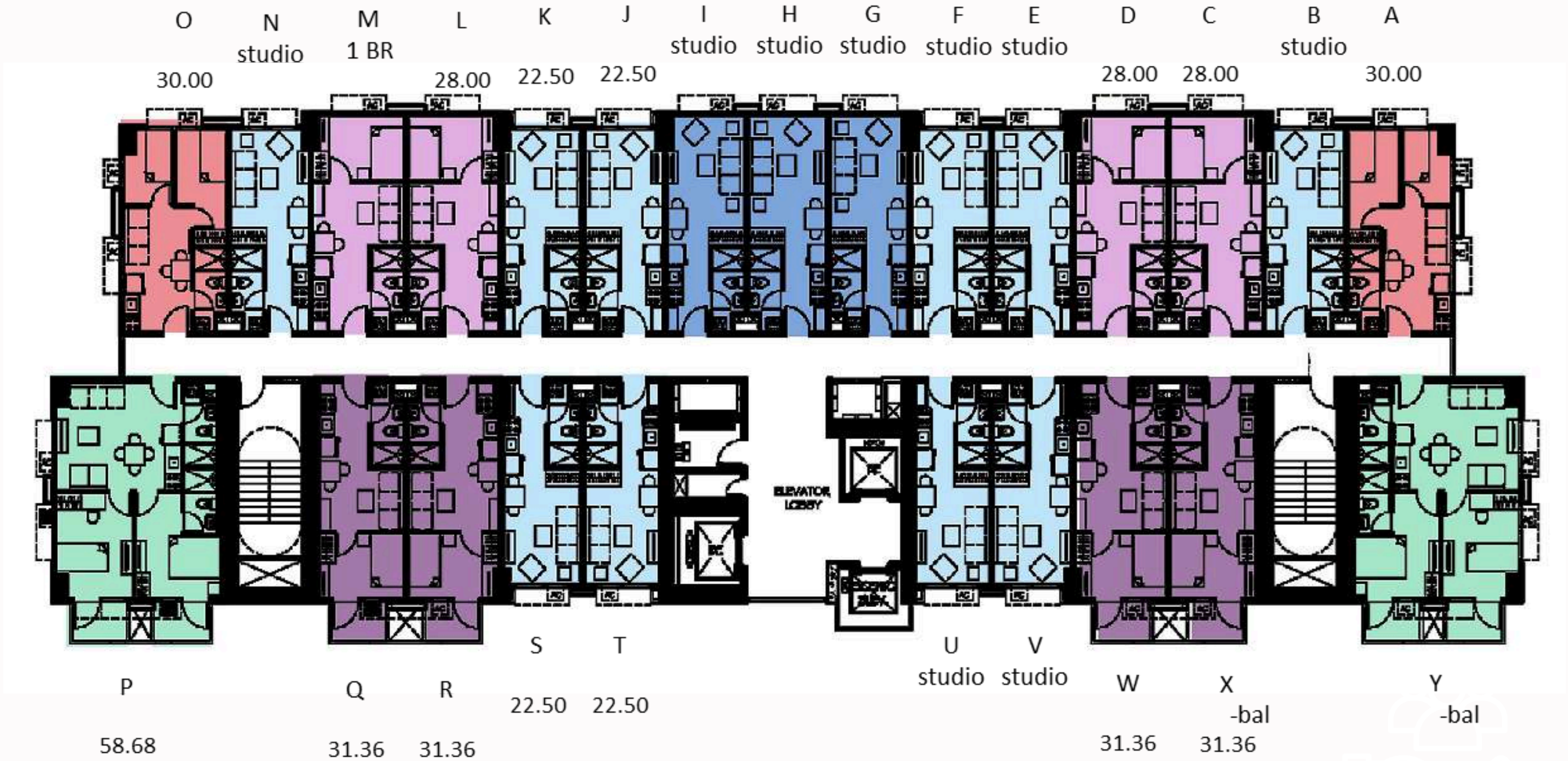


TYPICAL FLOOR PLAN 5th TO 27th LEVEL



Floor Plan

TOWER TWO

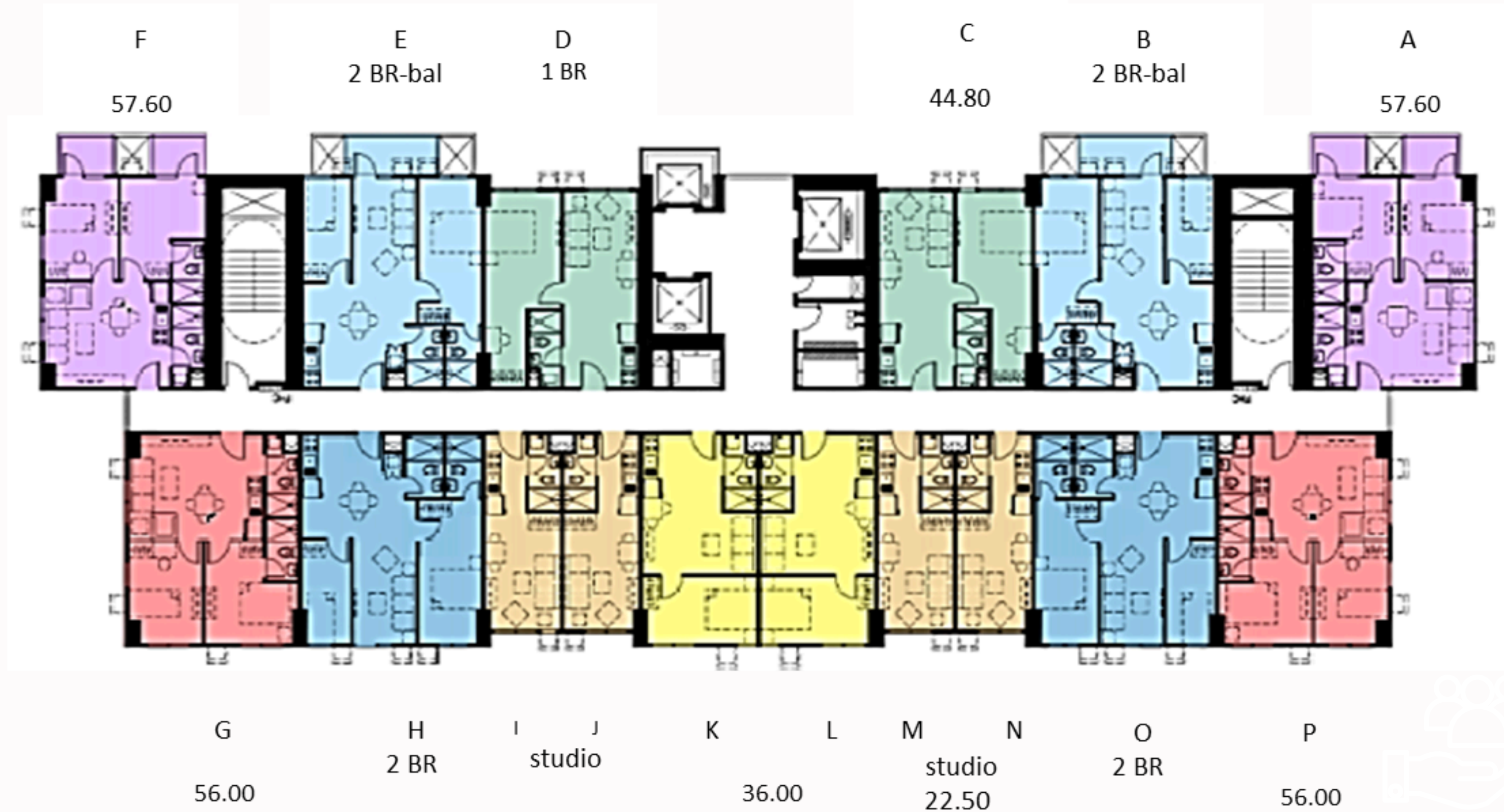


TYPICAL FLOOR PLAN 5th TO 25th LEVEL



Floor Plan

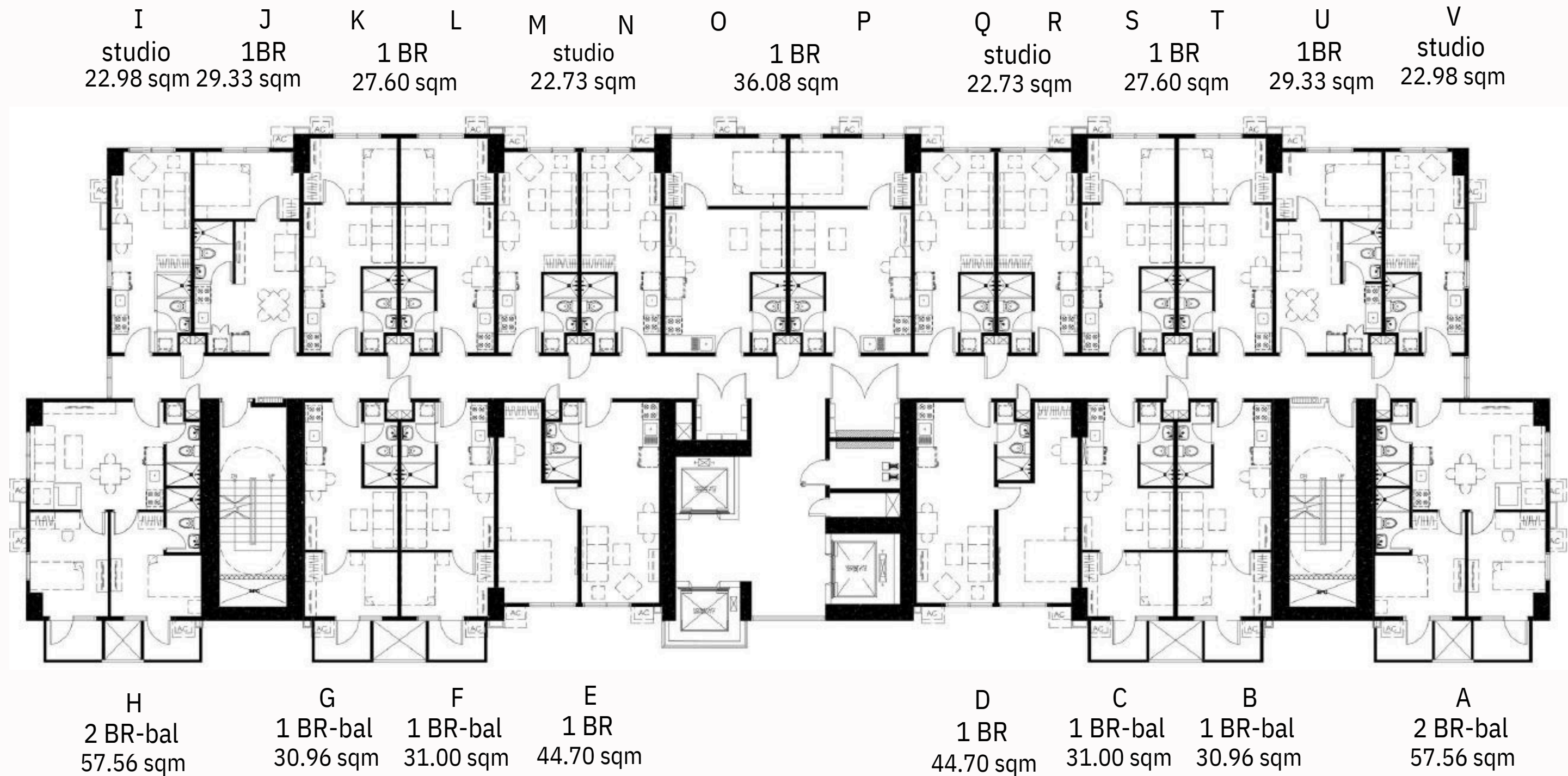
TOWER THREE



TYPICAL FLOOR PLAN 5th TO 31st LEVEL



TOWER FOUR

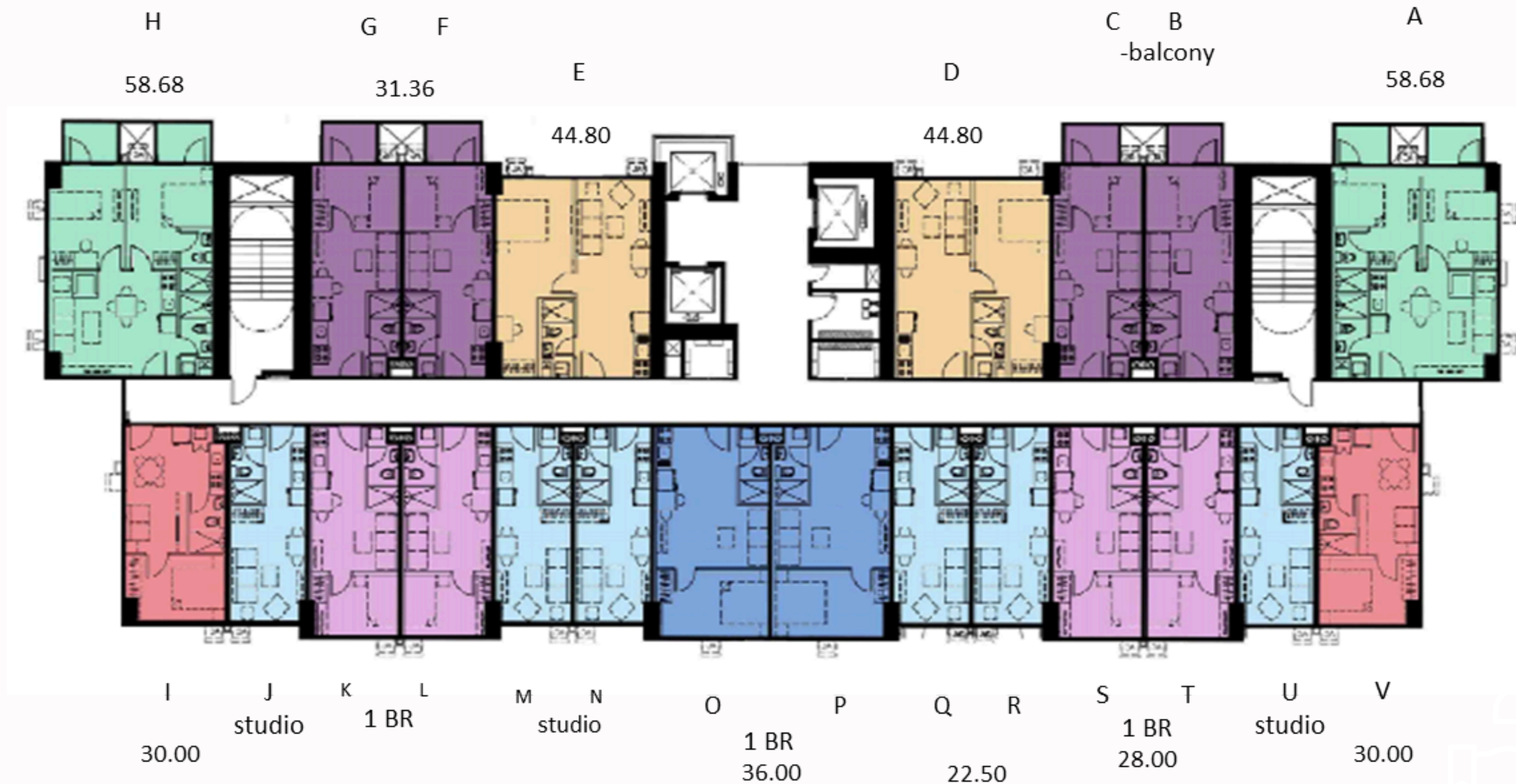


TYPICAL FLOOR PLAN 5th TO 29th LEVEL



Floor Plan

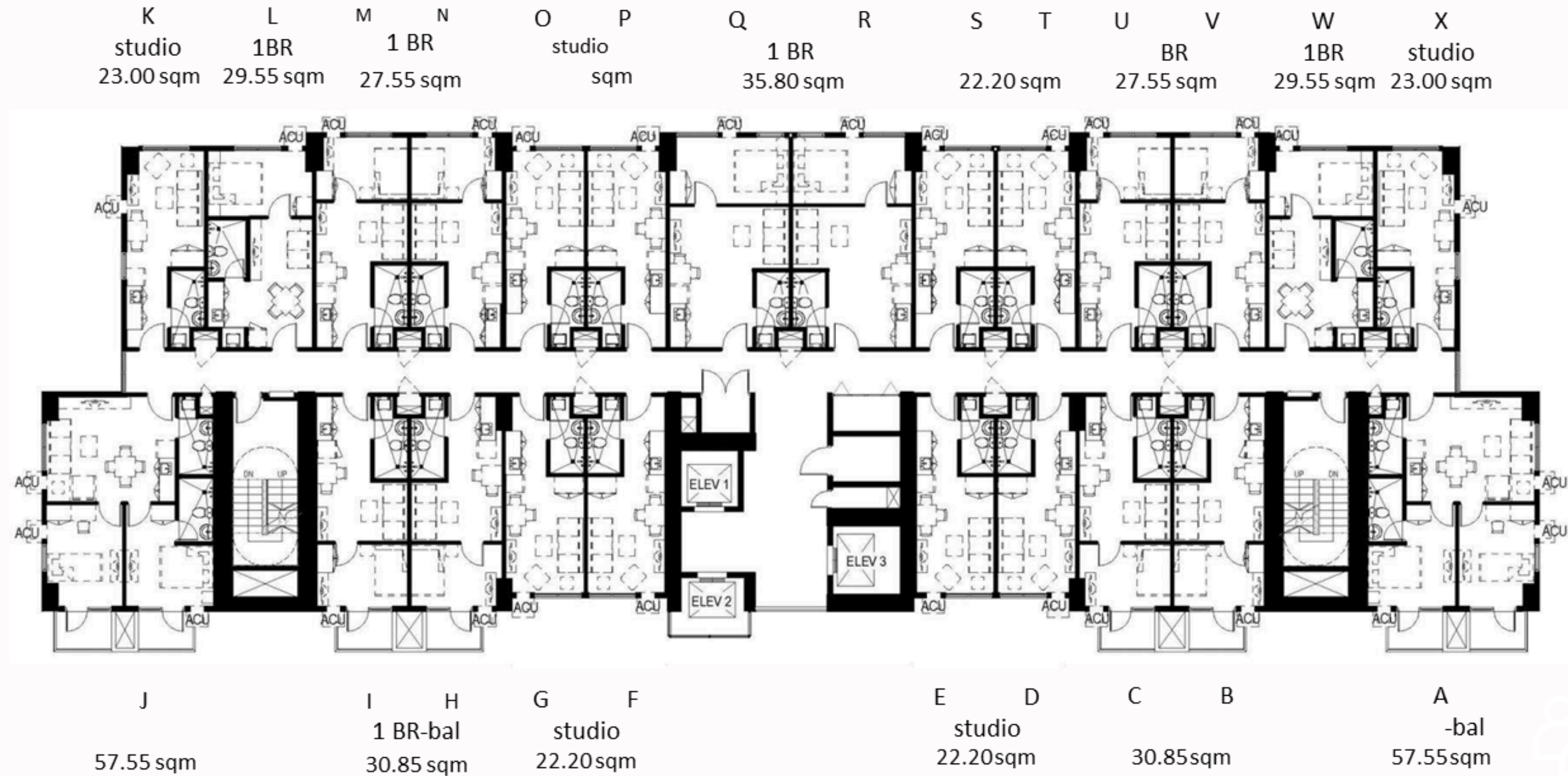
TOWER FIVE



TYPICAL FLOOR PLAN 5th TO 30th LEVEL



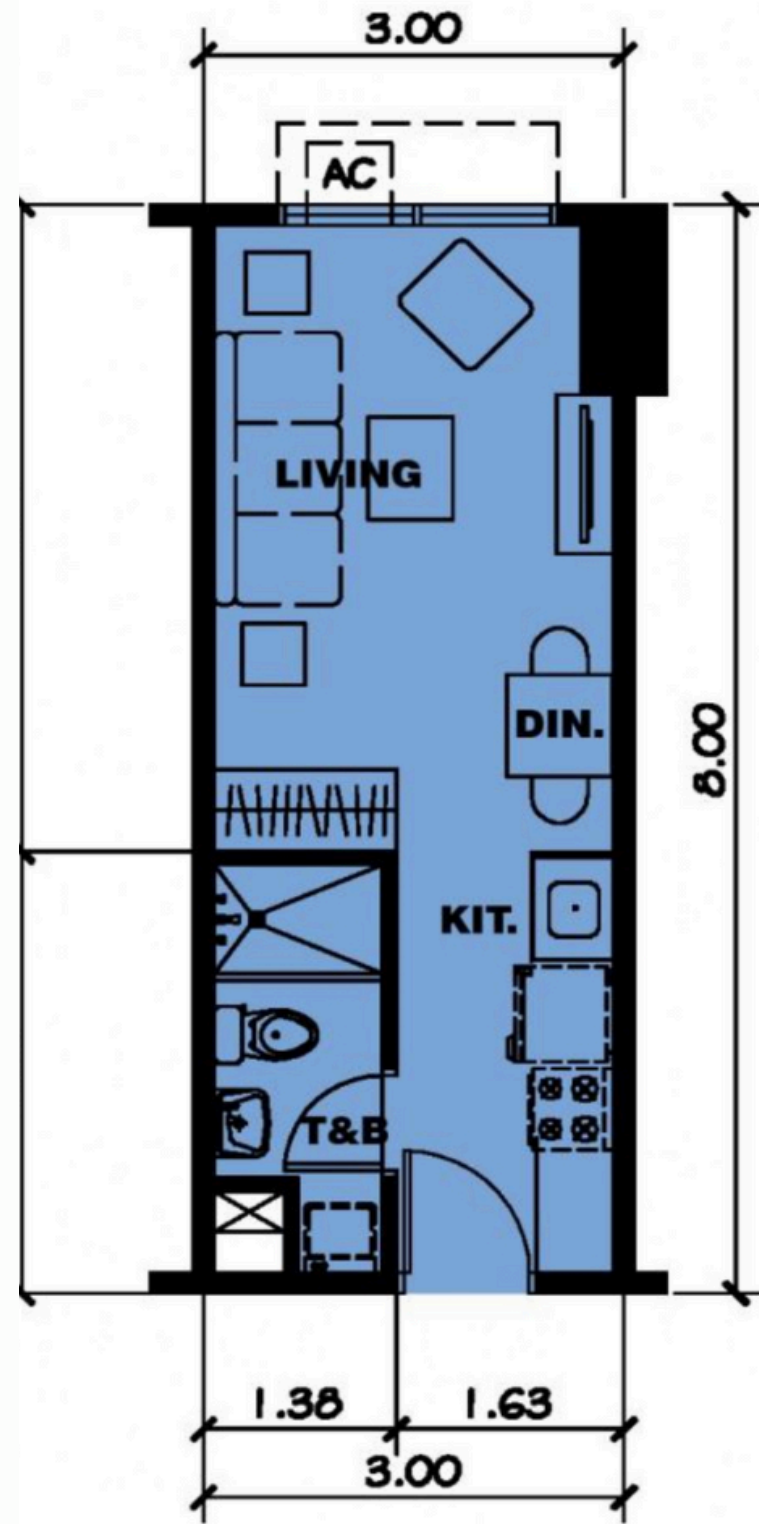
TOWER SIX



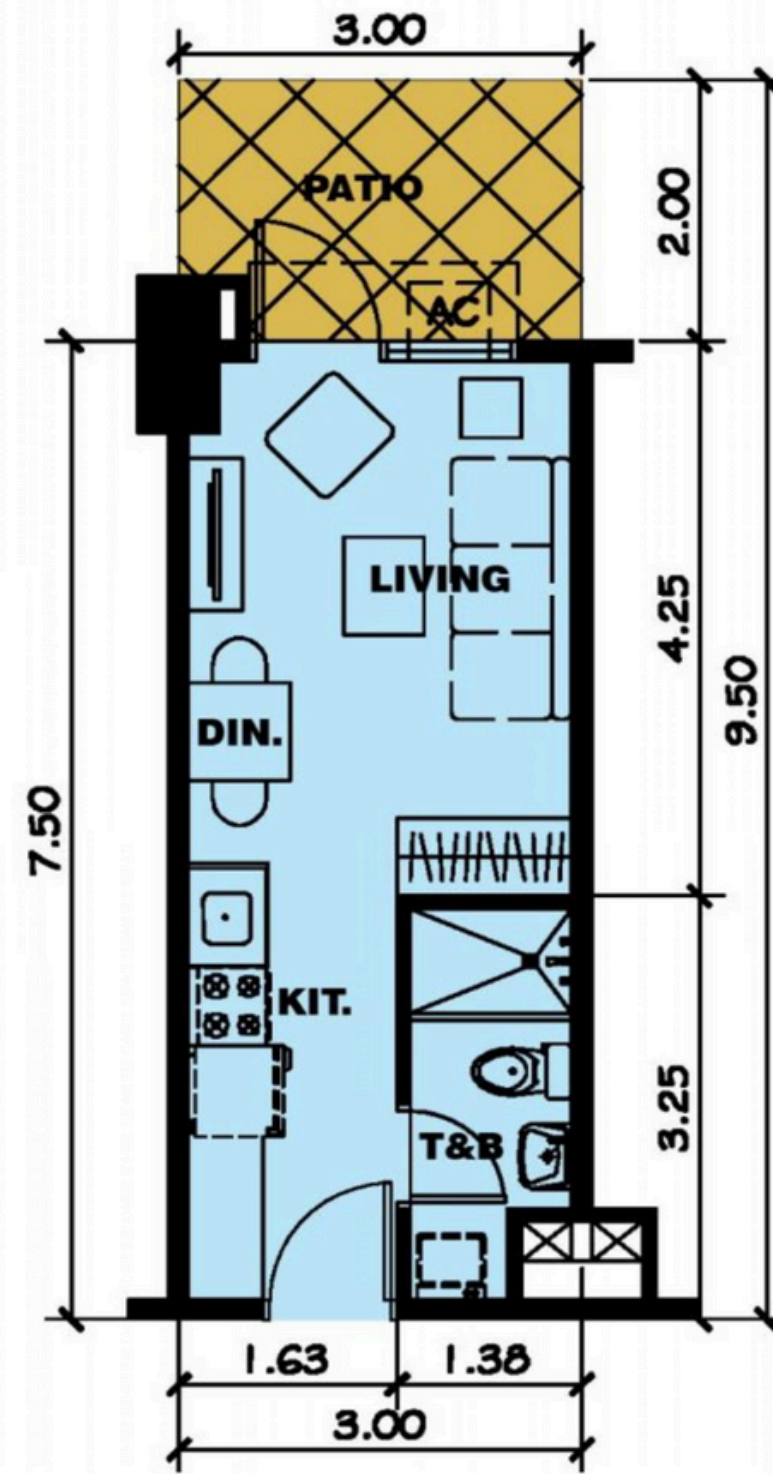
TYPICAL FLOOR PLAN 5th TO 30th LEVEL



UNIT LAYOUT

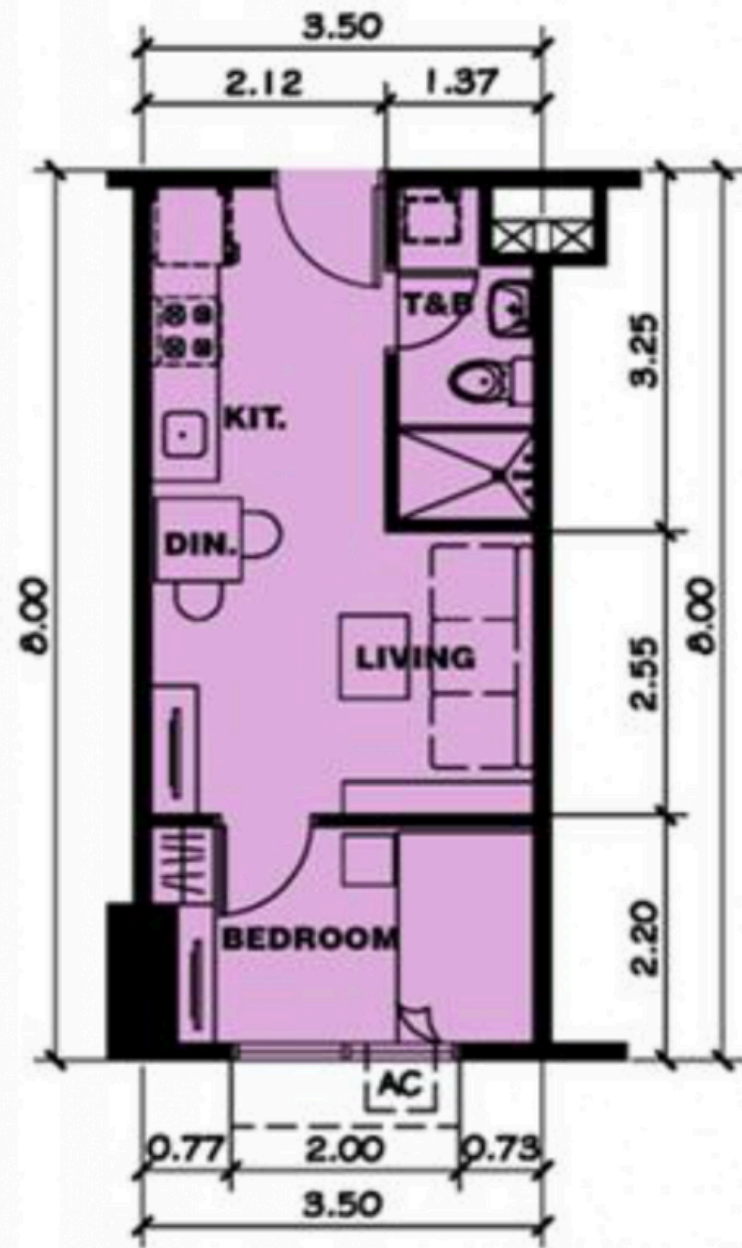


**EXECUTIVE
STUDIO
22 - 24 SQM**

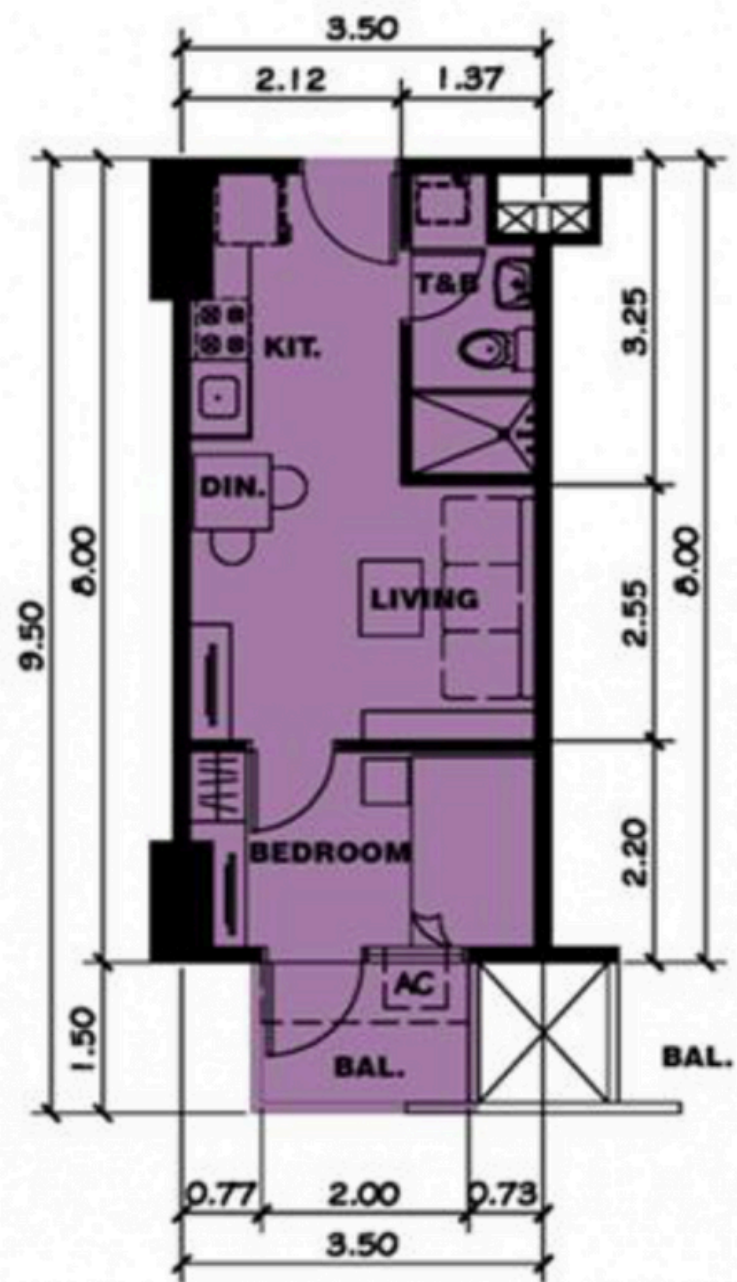


**EXECUTIVE STUDIO WITH PATIO
28.50 - 30 SQM**

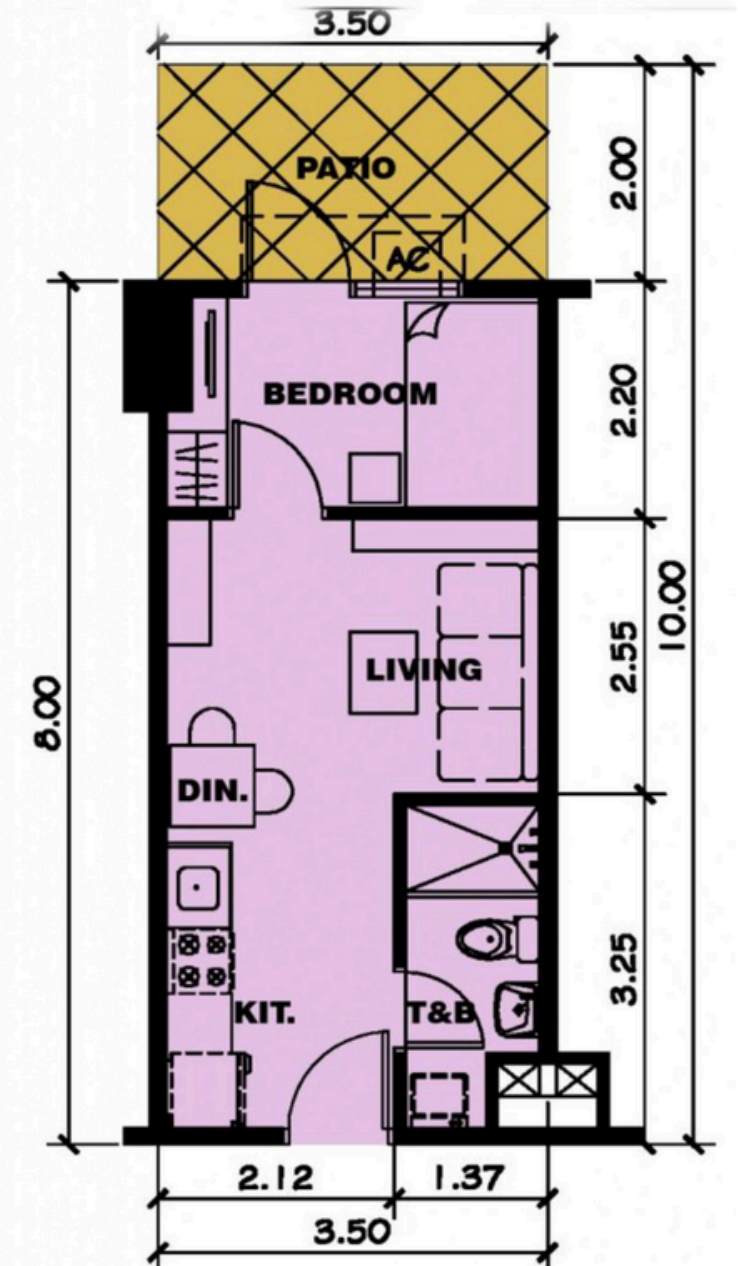
UNIT LAYOUT



ONE BEDROOM
27.55 – 35 sqm

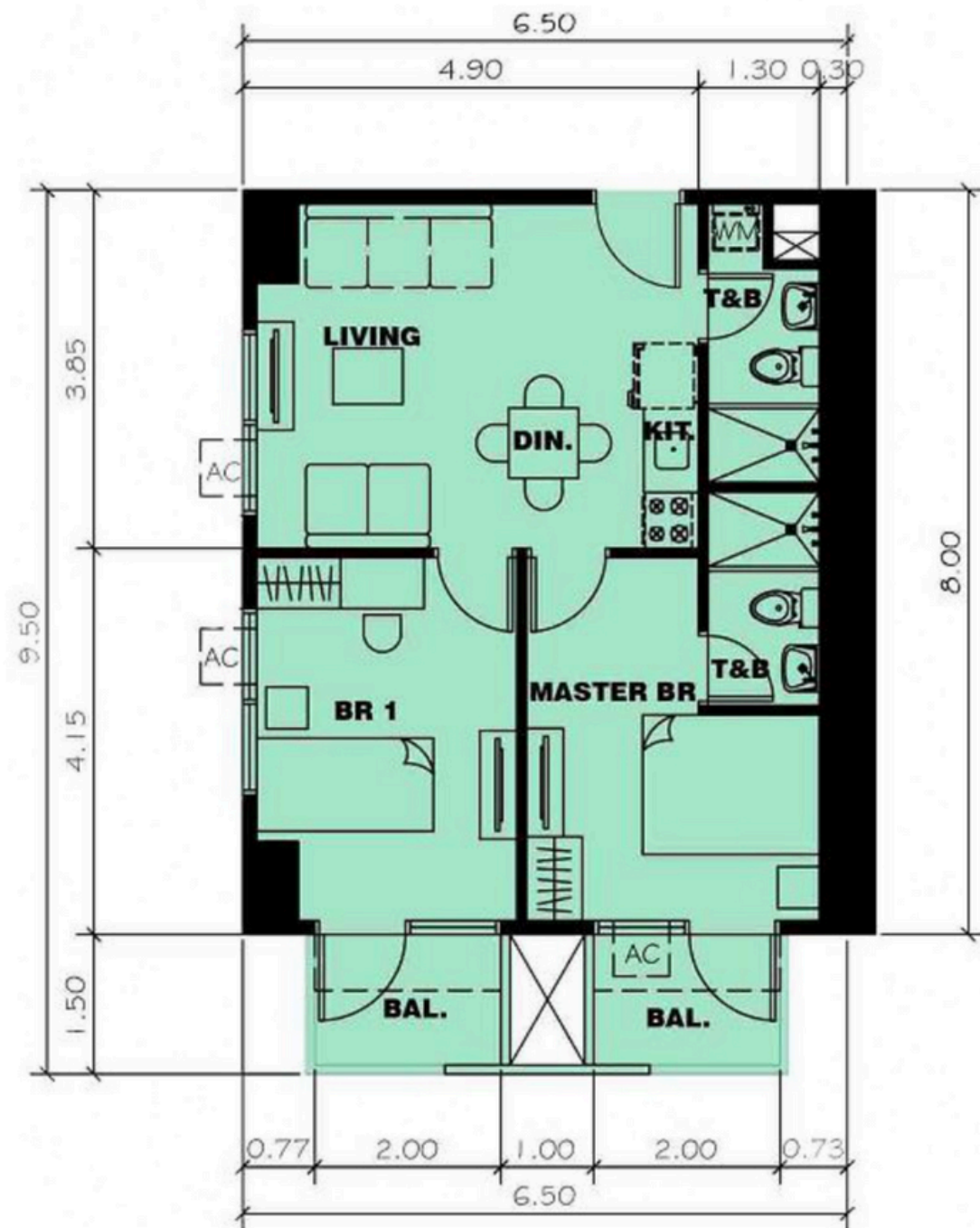


ONE BEDROOM WITH BALCONY
30 – 45 SQM

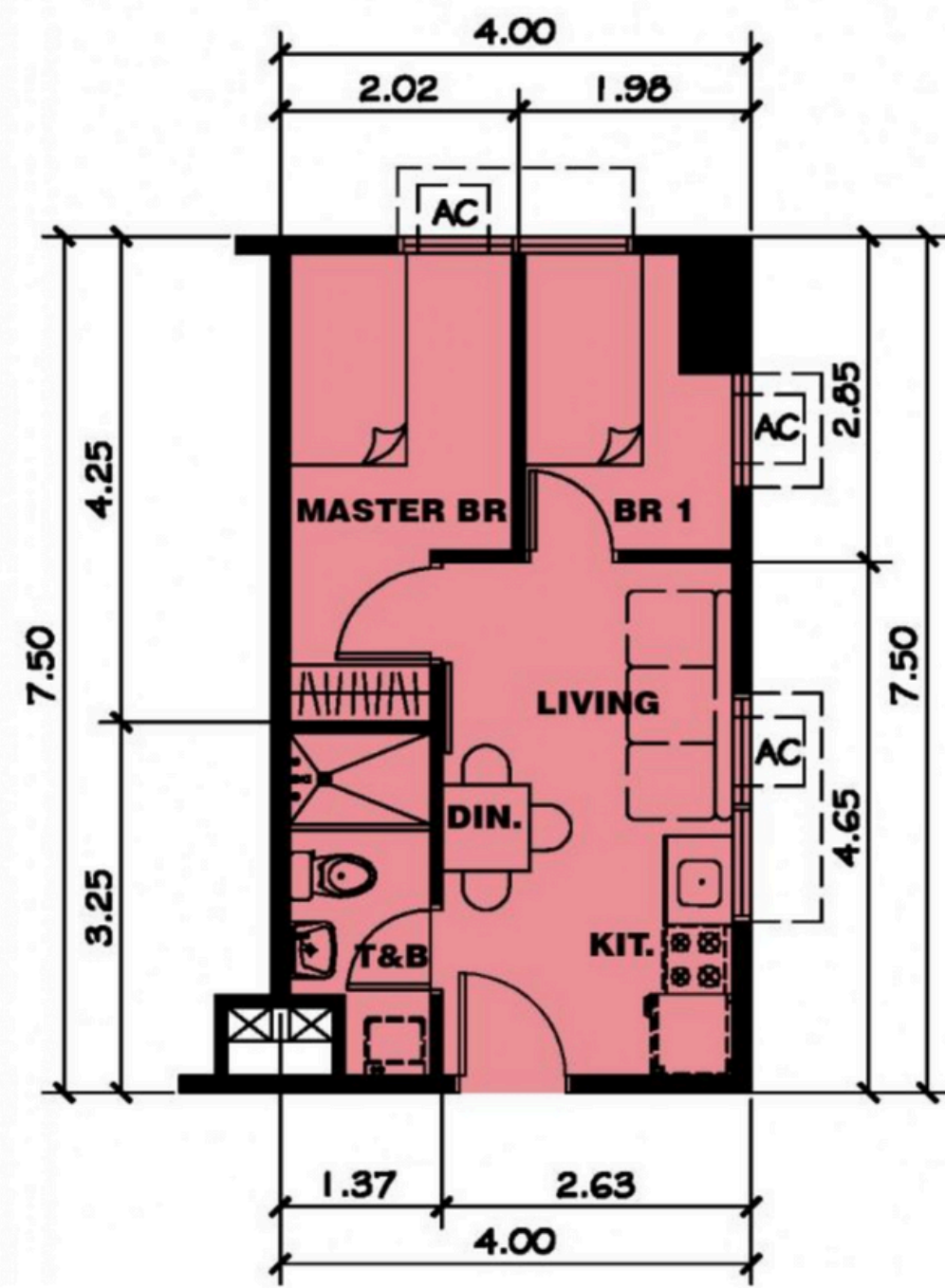


ONE BEDROOM WITH PATIO
35 – 45 SQM

UNIT LAYOUT



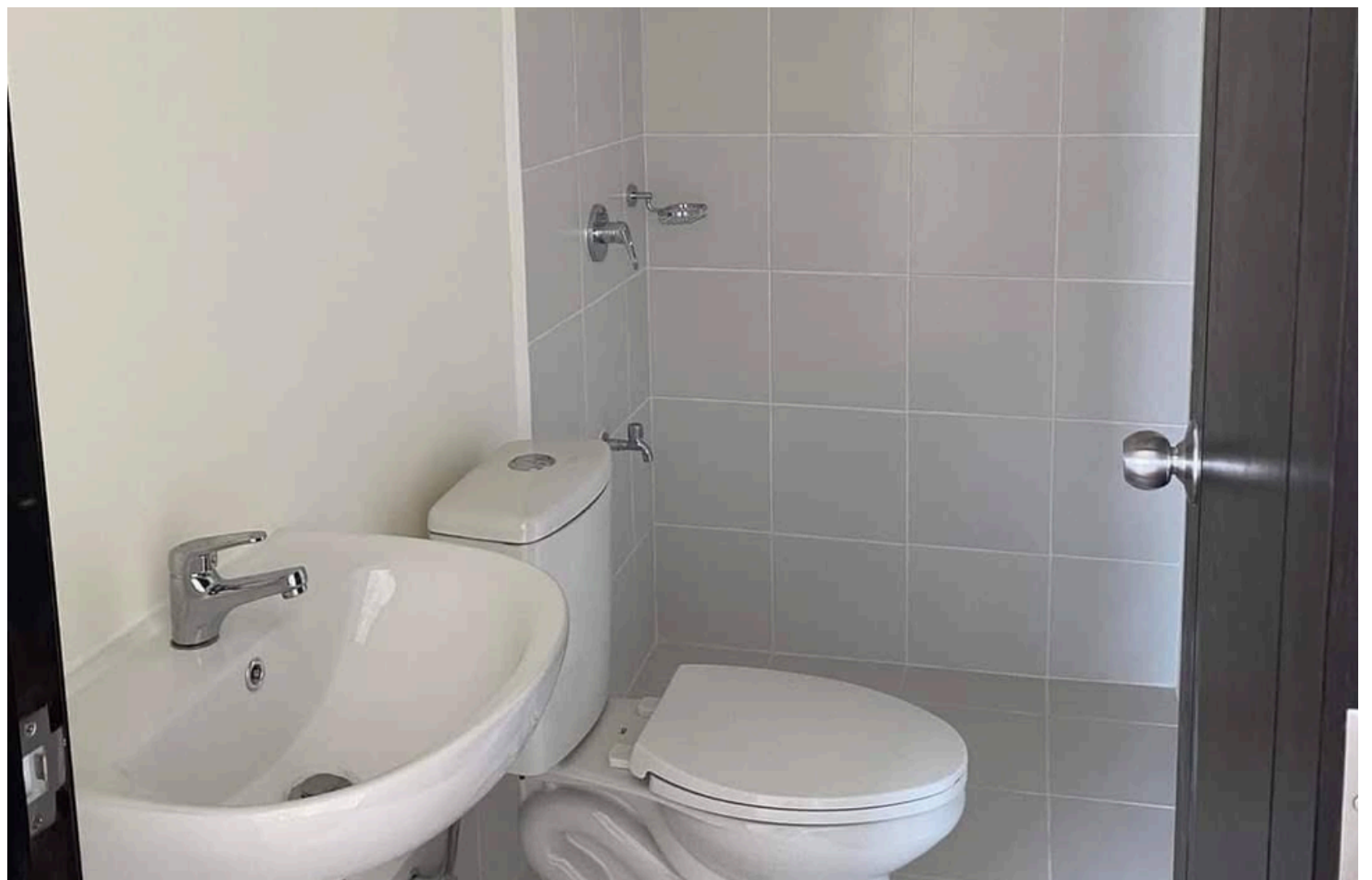
**TWO BEDROOM
58.68 SQM**



**TWO BEDROOM
30 SQM**

- **Flooring** - Porcelain tiles for living, dining, kitchen, balcony areas and toilet & bath.
- **Walls** - Painted finished.
- **Ceiling** - Suspended fiber cement board.
- **Doors** - Engineered wood for the main doors, flush doors for bedrooms, aluminum frame glass swing door for balconies.
- **Kitchen** - Granite countertop with stainless steel sink, overhead and undercounter cabinet, ventilation (owner supplied).
- **Toilet and bath** - Vessel type wash basin on granite countertop, tank type water closet, telephone type shower, ventilation (owner supplied), with soap holder and paper holder.

ACTUAL DELIVERABLES

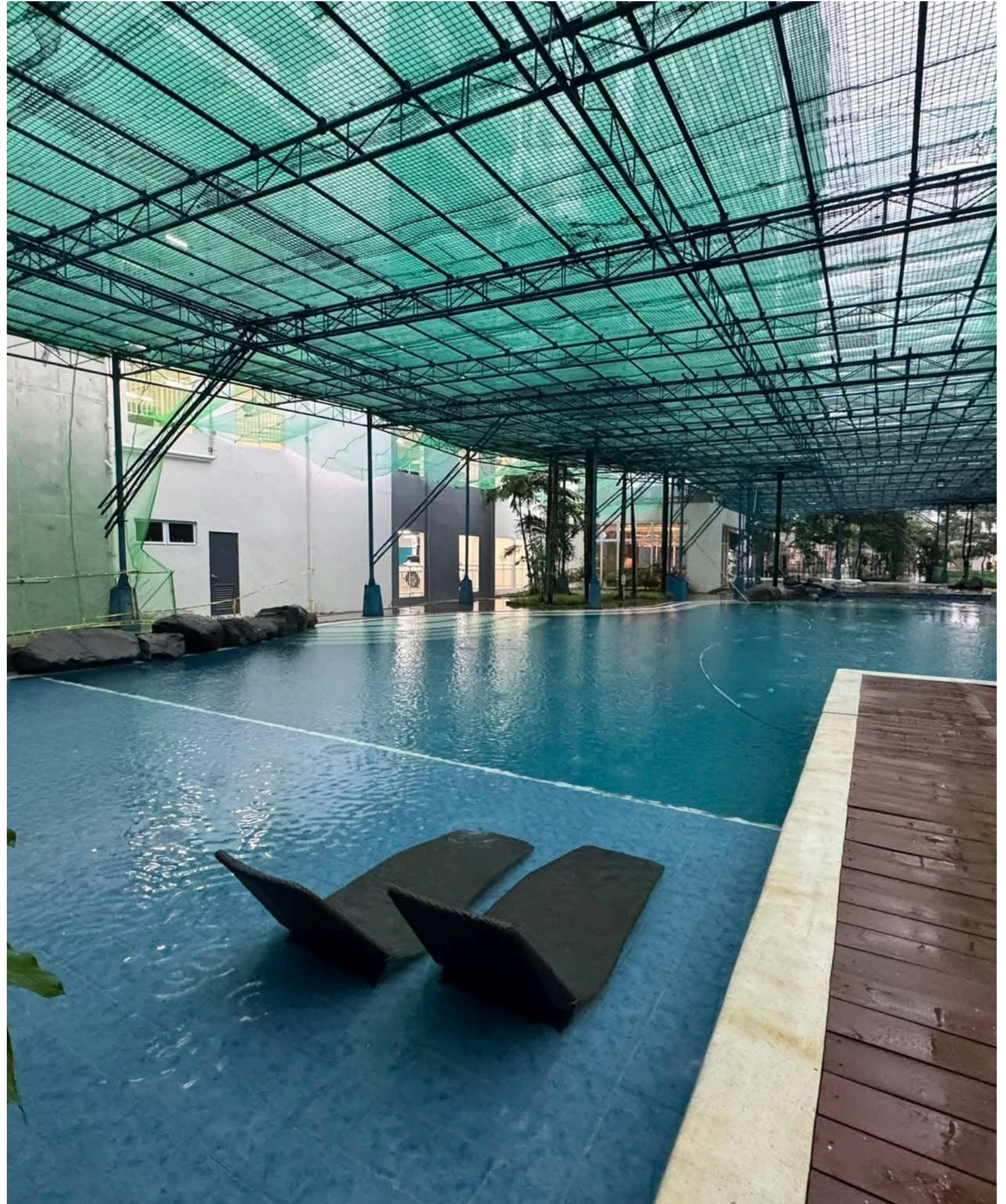
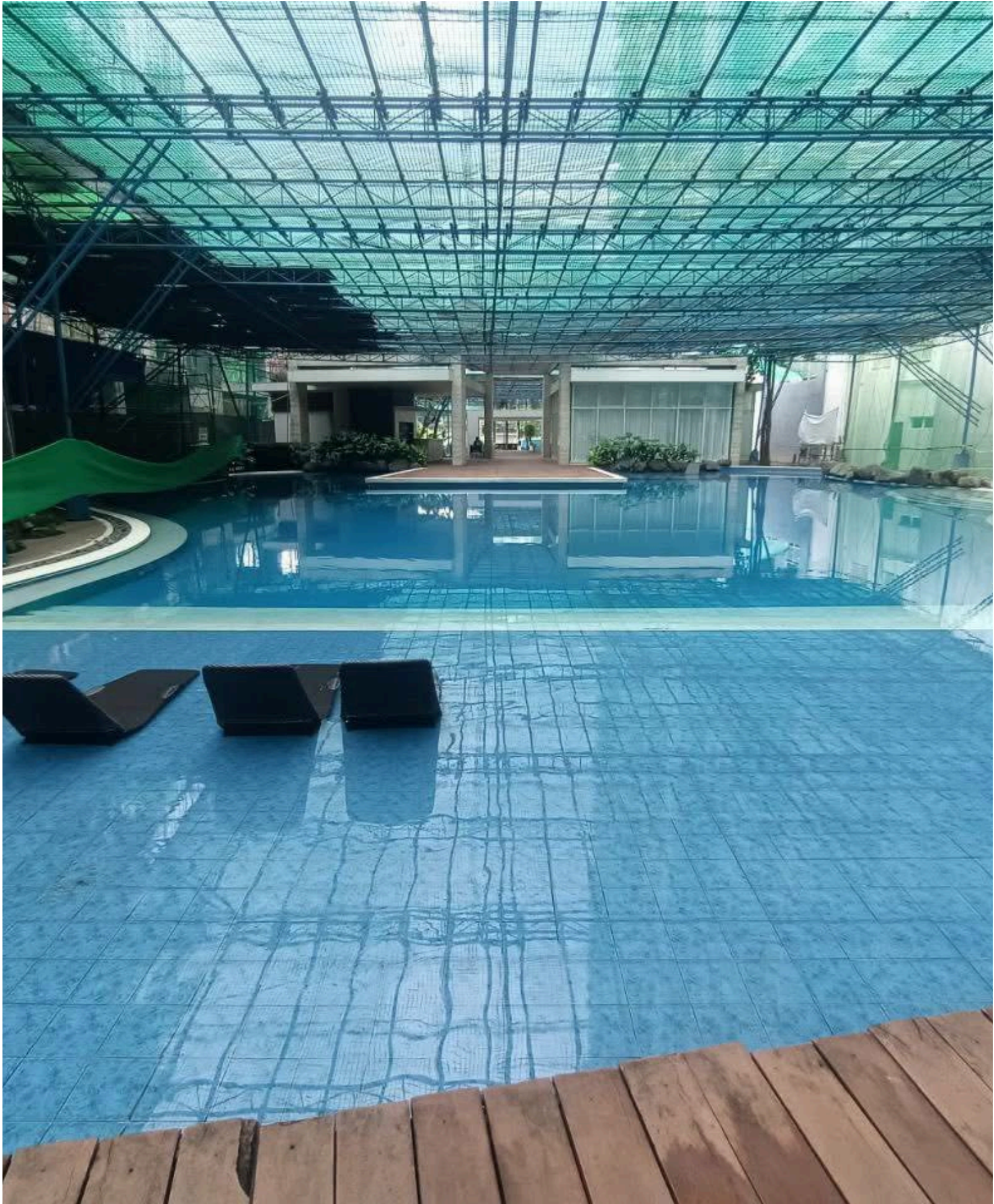


- **Smoke detectors**
- **Fire sprinkler**
- **Provision for fiber telecommunication lines**
- **CATV outlet**
- **Single-point water heater provision**
- **Exhaust fan at T&B**
- **Exhaust provision in Kitchen**
- **Provision for window-type aircon in Living Room and Bedroom**
- **Provision for washing machine**
- **Back-up power (1 outlet and 1 lighting)**

RECREATIONAL AMENITIES

- **Lake-Inspired Swimming pool**
- **Kiddie Pool**
- **Activity Area**
- **Multi-purpose Court**
- **Children's Playground**
- **Clubhouse Bar w/ Multi-purpose hall**
- **Jogging paths**
- **Water Feature**
- **Daycare Center**
- **Fitness Gym**
- **Indoor Gameroom**

POOL AREA



FITNESS GYM



BASKETBALL COURT



JOGGING PATHS



- **Interior-designed lobby and common areas**
- **Mailroom**
- **100% stand-by backup automatic generator system for common areas only**
- **24-hour security services and maintenance**
- **Fire alarm and smoke detection system**
- **Two fire exits per tower**
- **Centralized sanitary disposal system**
- **Automatic fire sprinkler system**
- **Allocated emergency load for residential units in case of a power outage**
- **Water reservoir with separate fire reserves**
- **CCTV cameras**

For inquiries, please email:

mwi.training@megaworld-marketing.com

Follow our social media accounts for more updates:



MWI Facebook
Page



MWI
Instagram



TBDG Viber
Group



TBDG
Recruitment



TBDG
Linked In