

WOODLAND PARK 4 PERSPECTIVE



These renderings are based on the architect's perspective and do not form part of an offer or contract. Selling price is established principally on a per unit basis and not on the unit measurement or dimension. Empire East reserves the right to modify these illustrations without prior notice. Clients are invited to verify subsequent changes. As of April 2017. For reference and presentation purposes only.



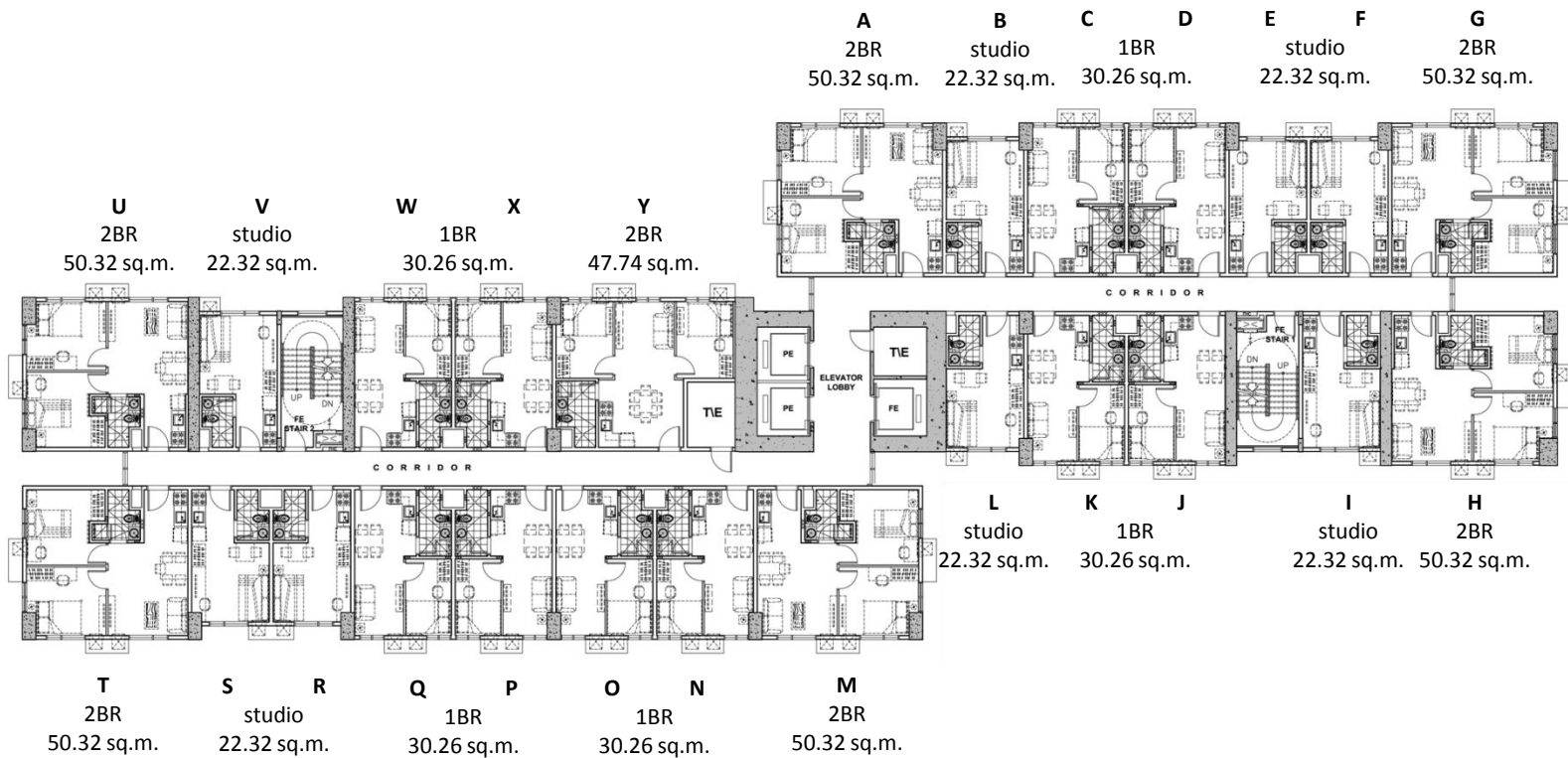
Pioneer
Woodlands

SITE DEVELOPMENT PLAN



These renderings are based on the architect's perspective and do not form part of an offer or contract. Selling price is established principally on a per unit basis and not on the unit measurement or dimension. Empire East reserves the right to modify these illustrations without prior notice. Clients are invited to verify subsequent changes. As of April 2017. For reference and presentation purposes only.

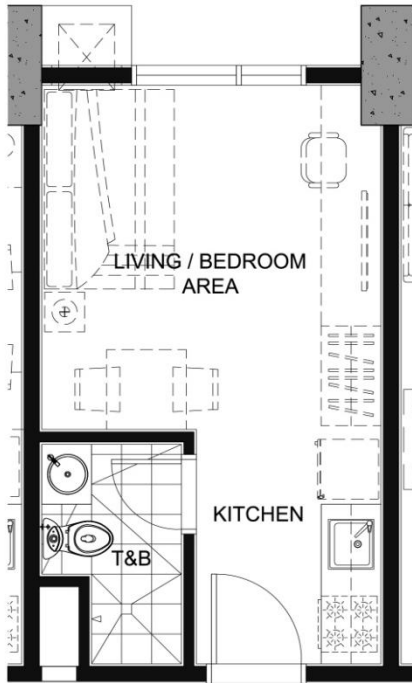
WOODLAND PARK 4



TYPICAL FLOOR PLAN 6th to 37th LEVEL

WOODLAND PARK 4 – UNIT LAYOUTS

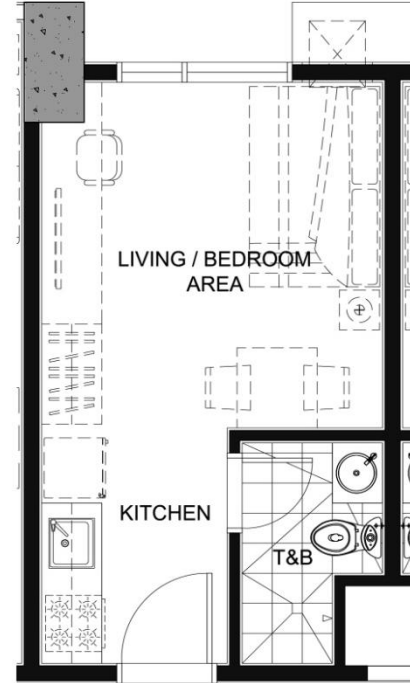
TYPICAL STUDIO UNITS



KEY PLAN



Unit B
22.32 SQ.M.

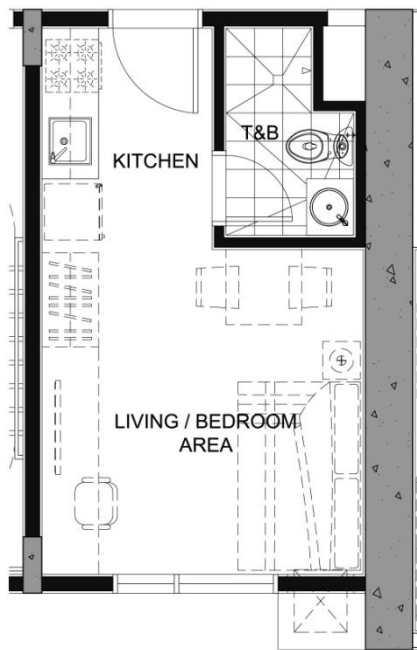


KEY PLAN



Unit E, F, R, S
22.32 SQ.M.

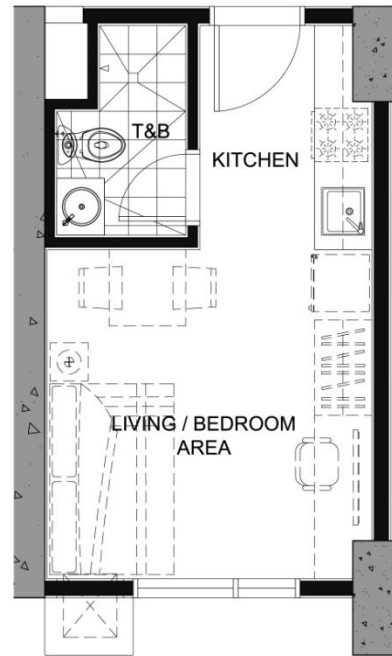
WOODLAND PARK 4 – UNIT LAYOUTS TYPICAL STUDIO UNITS



KEY PLAN



Unit I, V
22.32 SQ.M.



KEY PLAN



Unit L
22.32 SQ.M.

WOODLAND PARK 4 – UNIT LAYOUTS

TYPICAL ONE BEDROOM UNITS



KEY PLAN



Unit C, N, O, P
30.26 SQ.M.



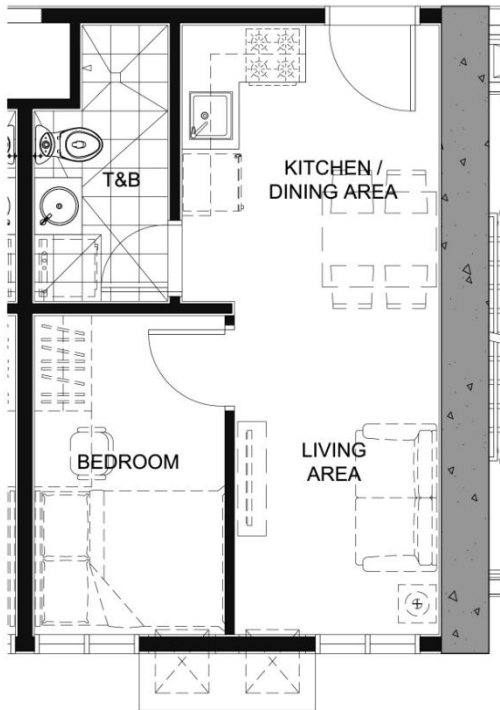
KEY PLAN



Unit D, Q
30.26 SQ.M.

WOODLAND PARK 4 – UNIT LAYOUTS

TYPICAL ONE BEDROOM UNITS



KEY PLAN



Unit J, W
30.26 SQ.M.



KEY PLAN



Unit K, X
30.26 SQ.M.

WOODLAND PARK 4 – UNIT LAYOUTS TYPICAL TWO BEDROOM UNITS



KEY PLAN



Unit Y
47.74 SQ.M.

WOODLAND PARK 4 – UNIT LAYOUTS TYPICAL TWO BEDROOM UNITS



Unit A
50.32 SQ.M.

WOODLAND PARK 4 – UNIT LAYOUTS TYPICAL TWO BEDROOM UNITS

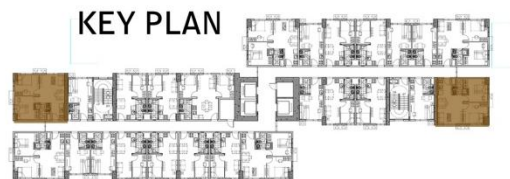


KEY PLAN



Unit G, T
50.32 SQ.M.

WOODLAND PARK 4 – UNIT LAYOUTS TYPICAL TWO BEDROOM UNITS

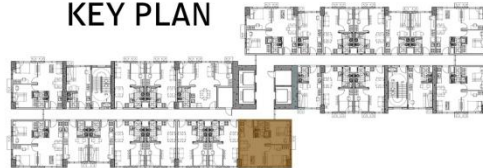


Unit B, U
50.32 SQ.M.

WOODLAND PARK 4 – UNIT LAYOUTS TYPICAL TWO BEDROOM UNITS



KEY PLAN



Unit M
50.32 SQ.M.