

AERIAL PERSPECTIVE



LOCATION MAP



SITE DEVELOPMENT PLAN



WOODLAND PARK II



WOODLAND PARK I AND II EXTERIOR PERSPECTIVE



These renderings are based on the architect's perspective and do not form part of an offer or contract. Selling price is established principally on a per unit basis and not on the unit measurement or dimension. Empire East reserves the right to modify these illustrations without prior notice. Clients are invited to verify subsequent changes. As of June 2013. For reference and presentation purposes only.

WOODLAND PARK AERIAL VIEW



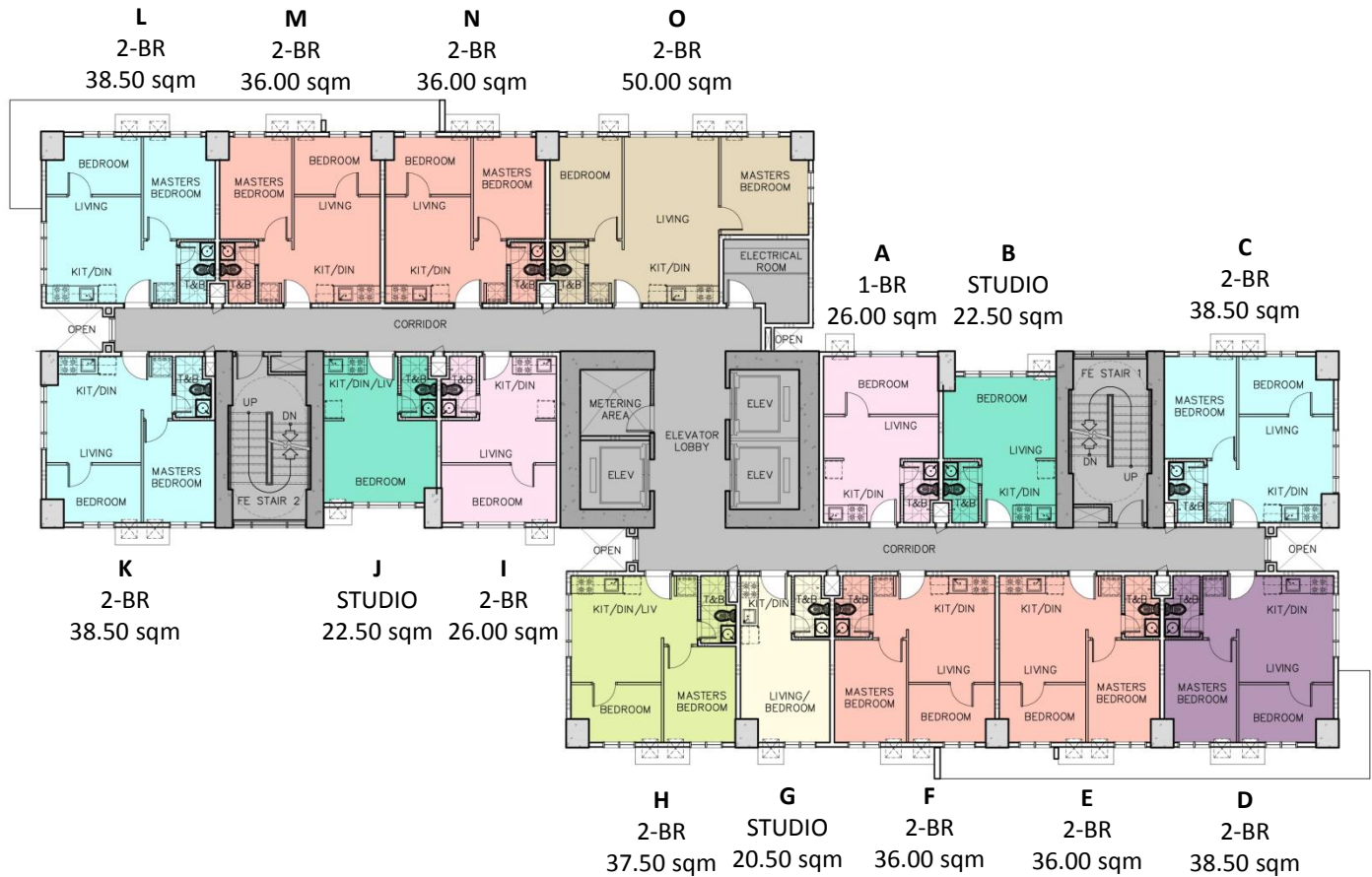


WOODLAND PARK SPOT PERSPECTIVE



These renderings are based on the architect's perspective and do not form part of an offer or contract. Selling price is established principally on a per unit basis and not on the unit measurement or dimension. Empire East reserves the right to modify these illustrations without prior notice. Clients are invited to verify subsequent changes. As of June 2013. For reference and presentation purposes only.

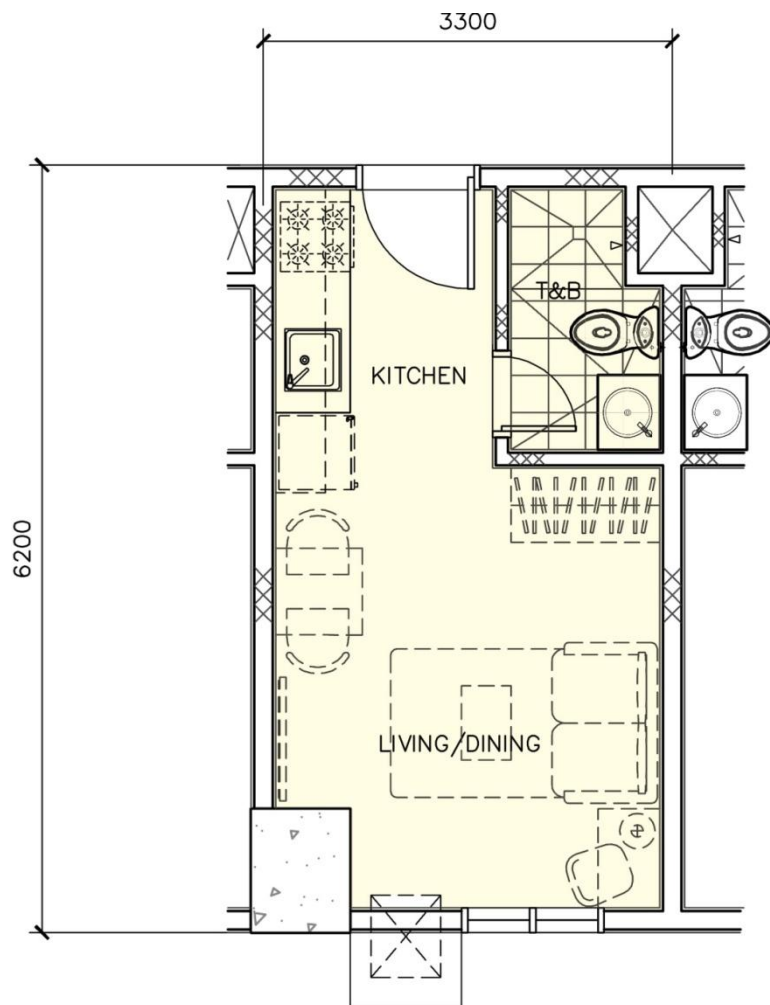
WOODLAND PARK I



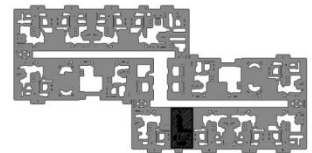
TYPICAL FLOOR PLAN 6th to 36th LEVEL



WOODLAND PARK I – UNIT LAYOUTS EXECUTIVE STUDIO UNIT

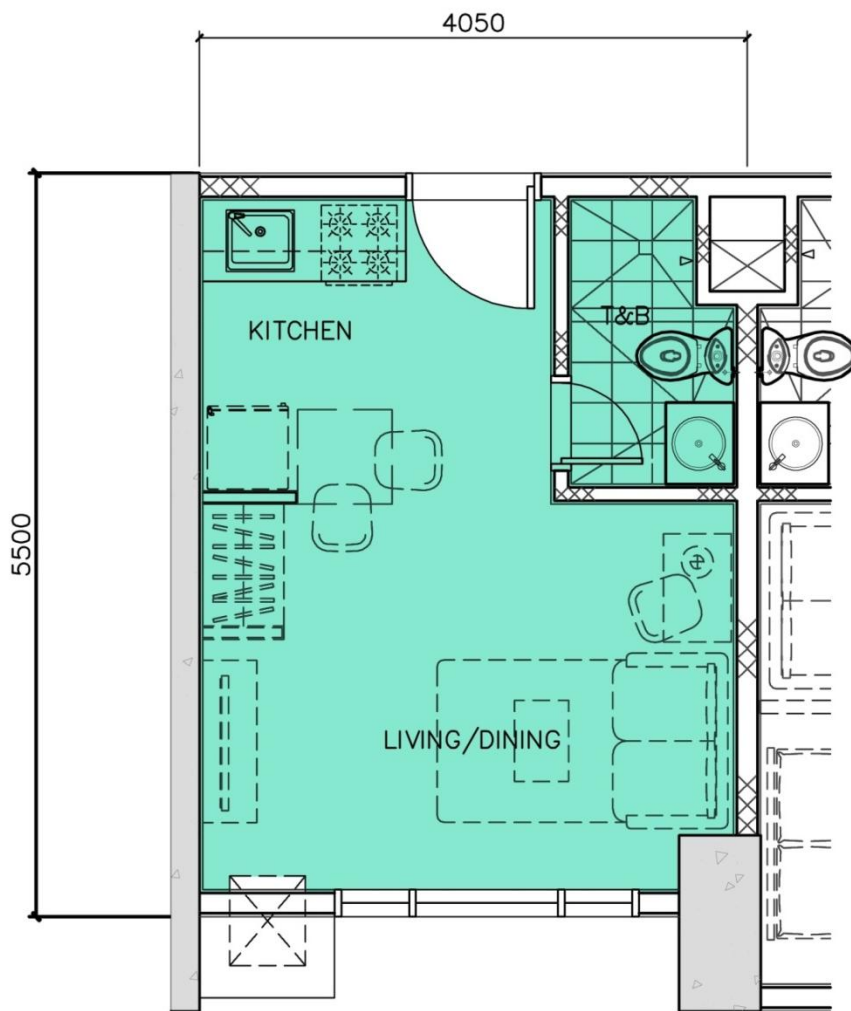


KEY

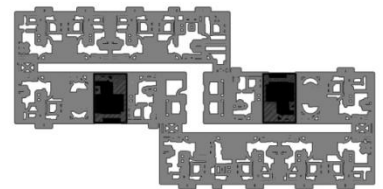


Unit G
20.5 SQ.M.

WOODLAND PARK I – UNIT LAYOUTS EXECUTIVE STUDIO UNIT

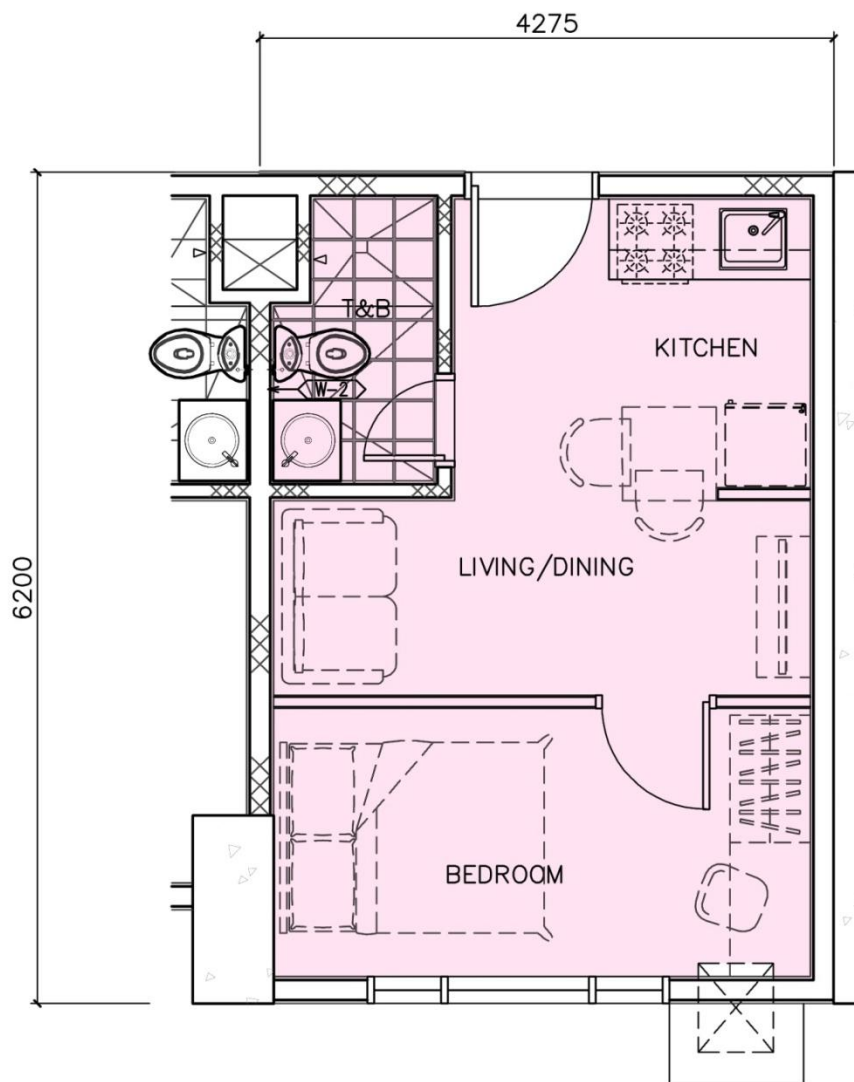


KEY PLAN

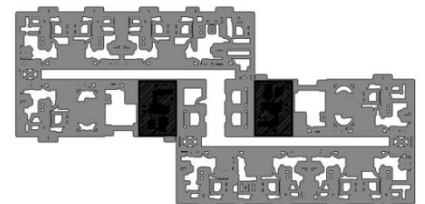


Unit B, J
22.5 SQ.M.

WOODLAND PARK I – UNIT LAYOUTS TYPICAL ONE BEDROOM UNIT

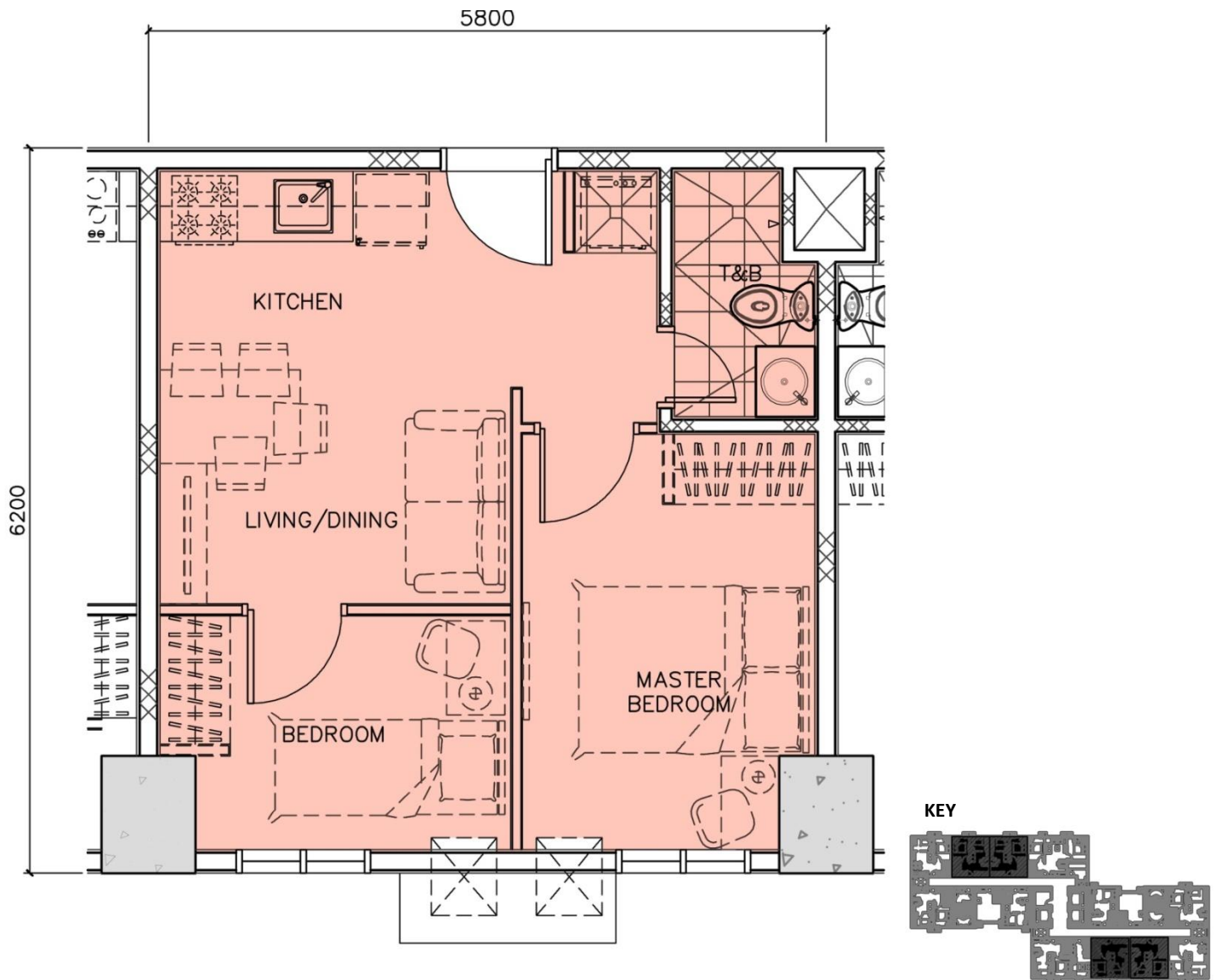


KEY PLAN



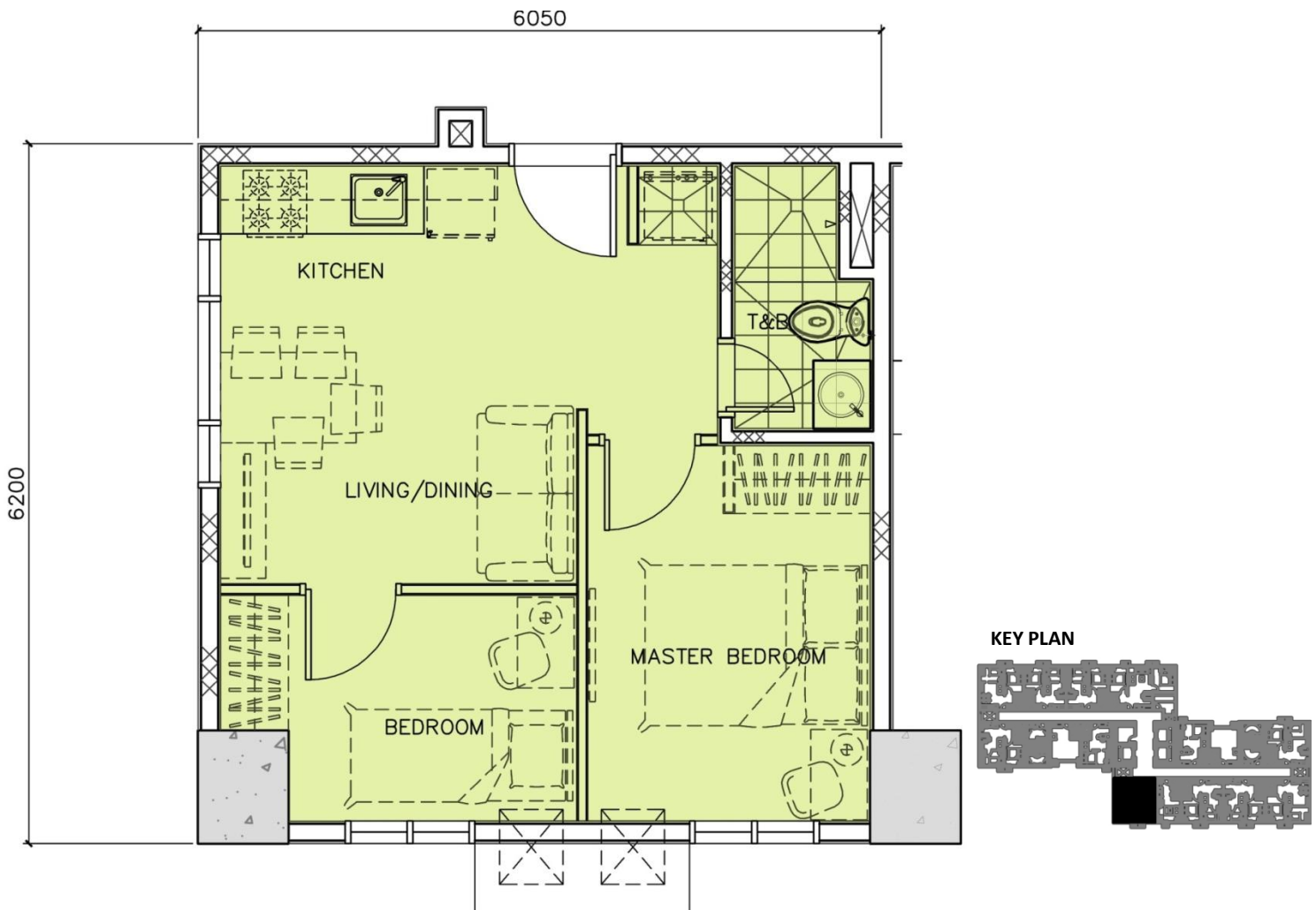
Unit A, I
26.0 SQ.M.

WOODLAND PARK I – UNIT LAYOUTS TYPICAL TWO BEDROOM UNIT



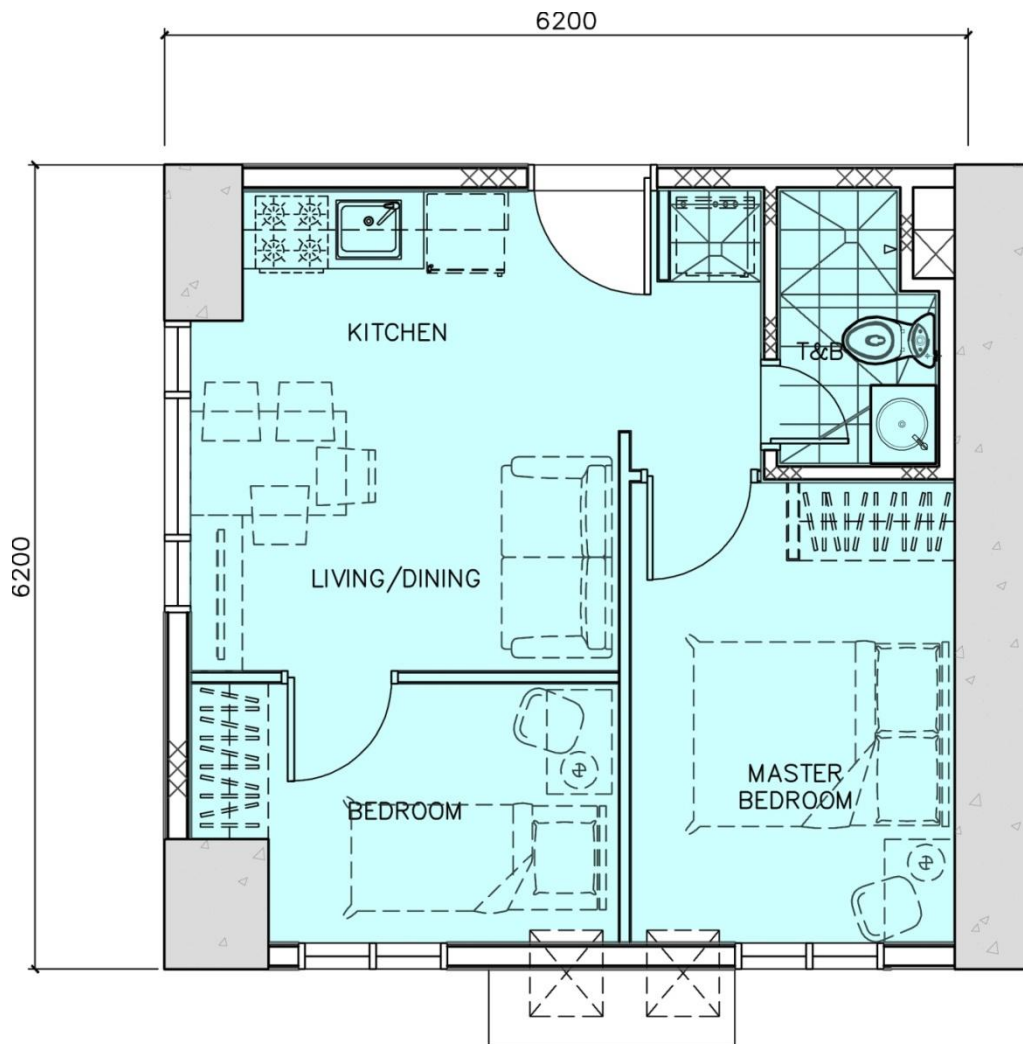
Unit E, F, M, N
36.0 SQ.M.

WOODLAND PARK I – UNIT LAYOUTS TYPICAL TWO BEDROOM UNIT

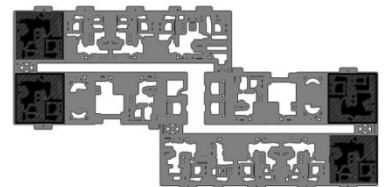


Unit H
37.5 SQ.M.

WOODLAND PARK I – UNIT LAYOUTS TYPICAL TWO BEDROOM UNIT

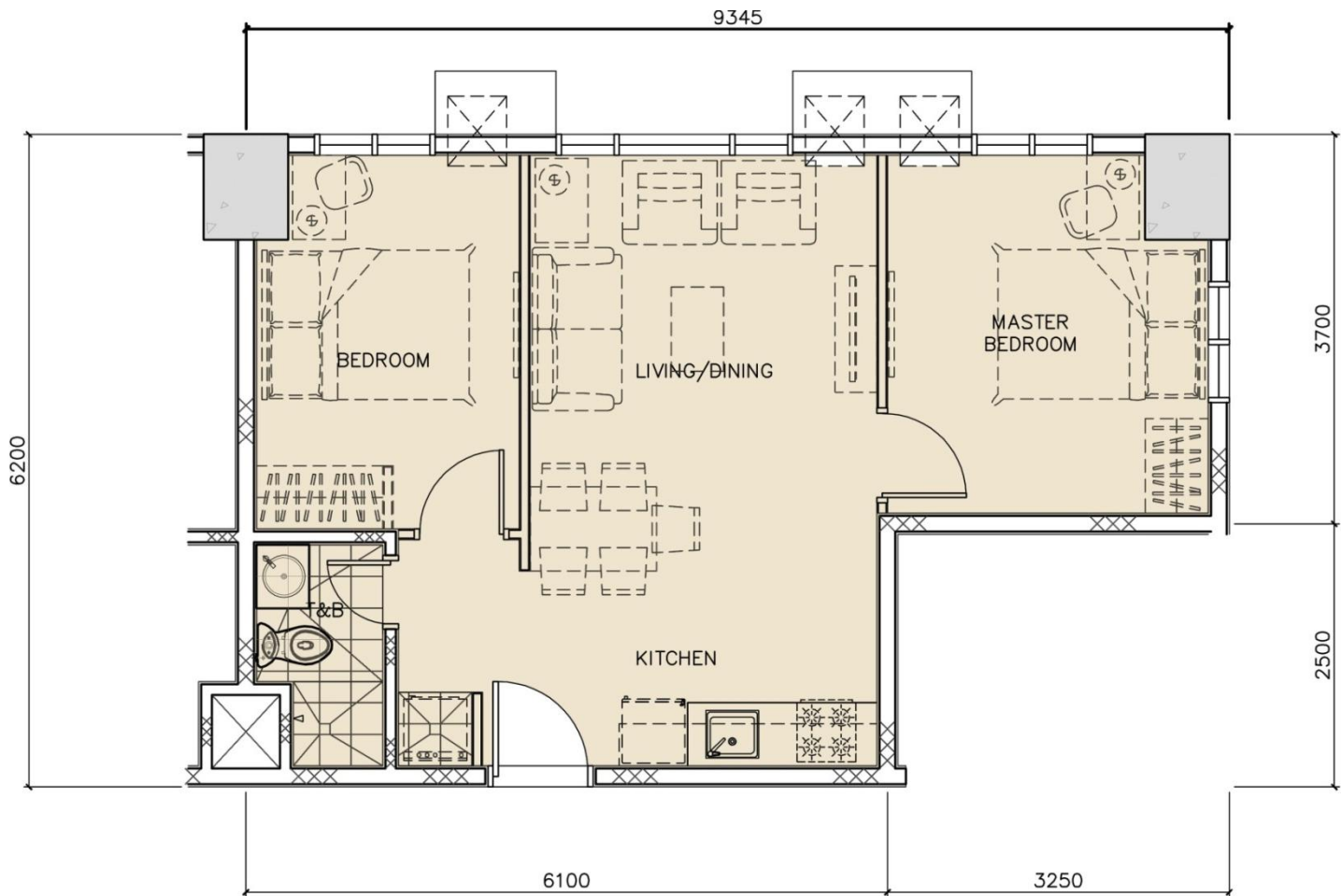


KEY PLAN



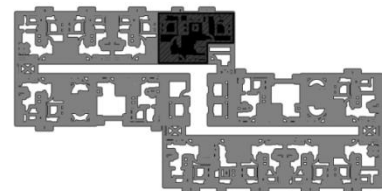
Unit C, D, K, L
38.5 SQ.M.

WOODLAND PARK I – UNIT LAYOUTS TYPICAL TWO BEDROOM UNIT



Unit O
50.0 SQ.M.

KEY PLAN



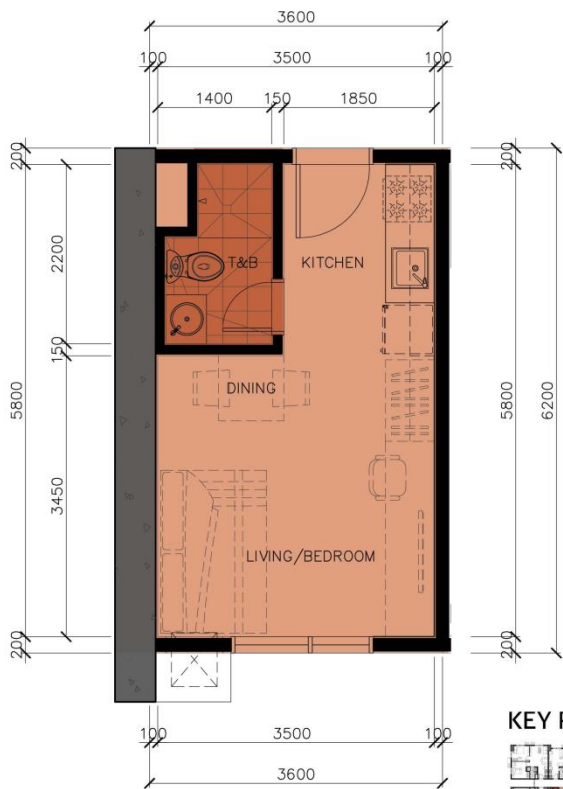
WOODLAND PARK II



TYPICAL FLOOR PLAN 6th to 36th LEVEL

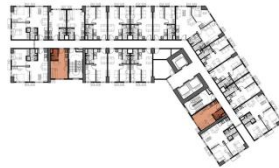
WOODLAND PARK II – UNIT LAYOUTS

TYPICAL STUDIO UNIT



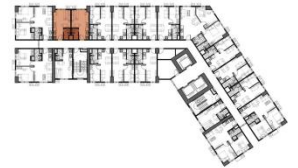
Unit D, S

KEY PLAN



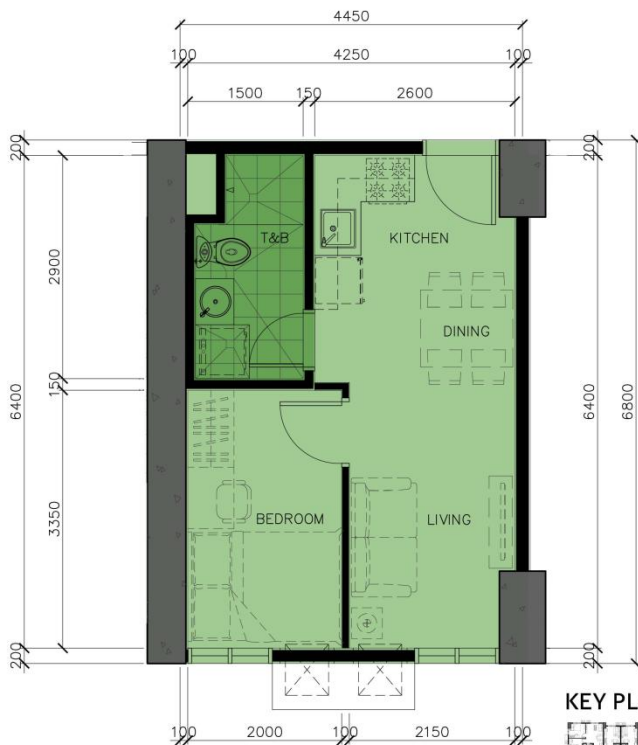
Unit G, H

KEY PLAN



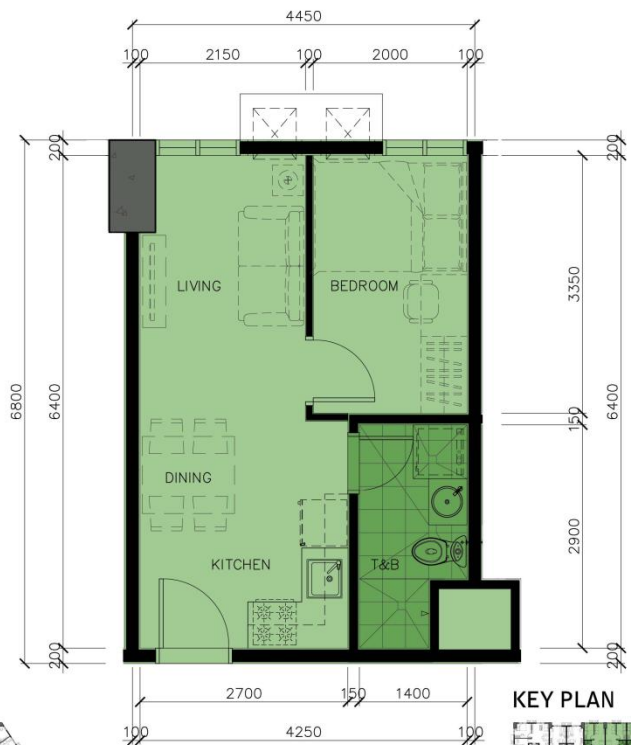
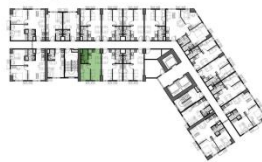
22.32 SQ.M.

WOODLAND PARK II – UNIT LAYOUTS TYPICAL ONE BEDROOM UNIT



Unit C

KEY PLAN



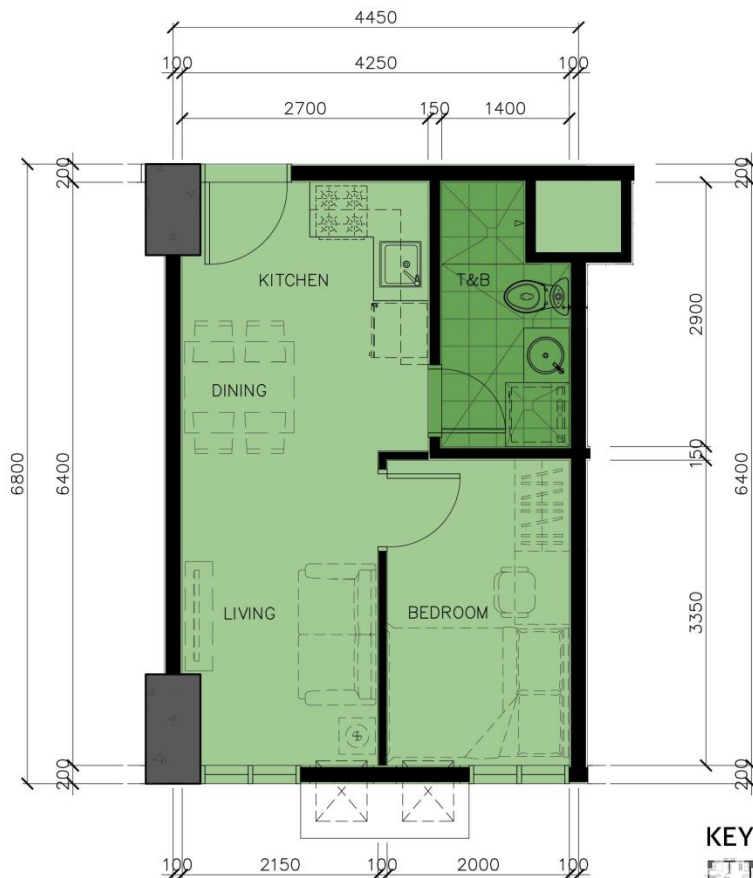
Unit I, J, K, L, N, O

KEY PLAN



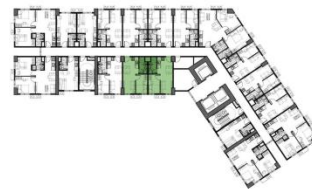
30.26 SQ.M.

WOODLAND PARK II – UNIT LAYOUTS TYPICAL ONE BEDROOM UNIT



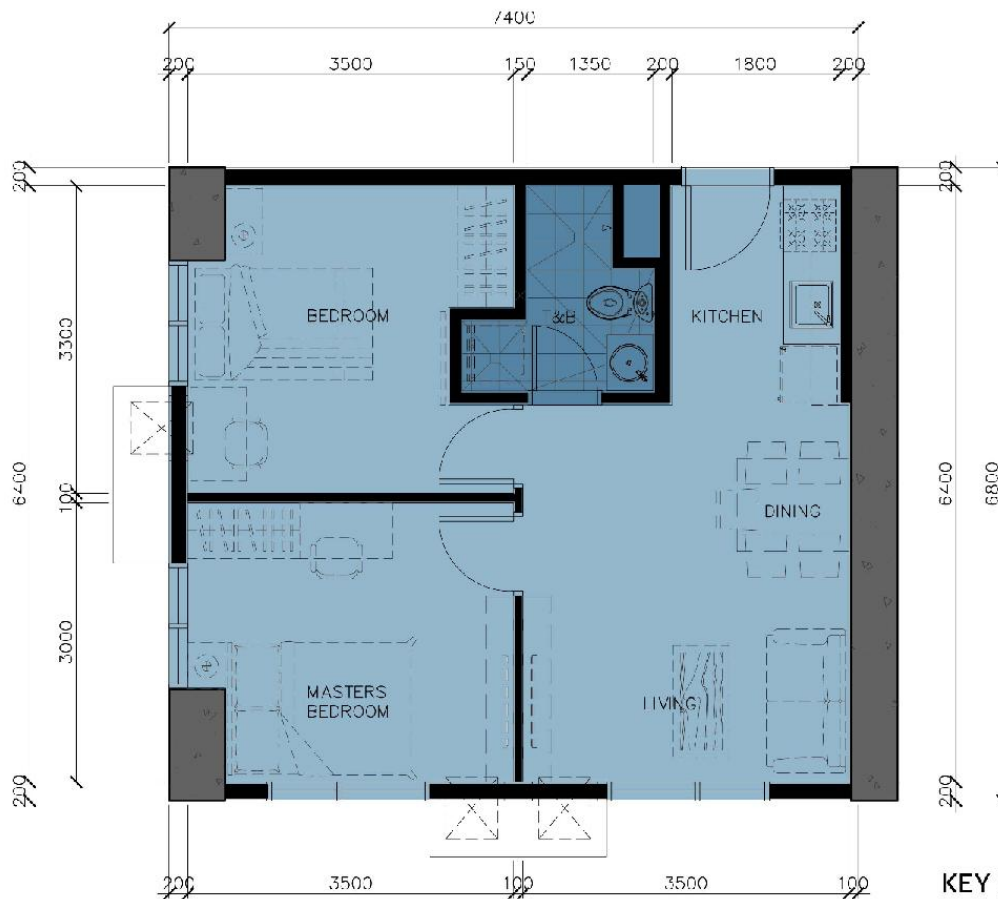
Unit A, B

KEY PLAN



30.26 SQ.M.

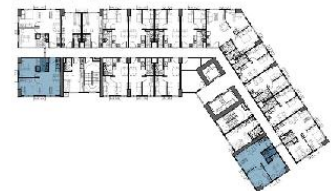
WOODLAND PARK II – UNIT LAYOUTS TYPICAL TWO BEDROOM UNIT



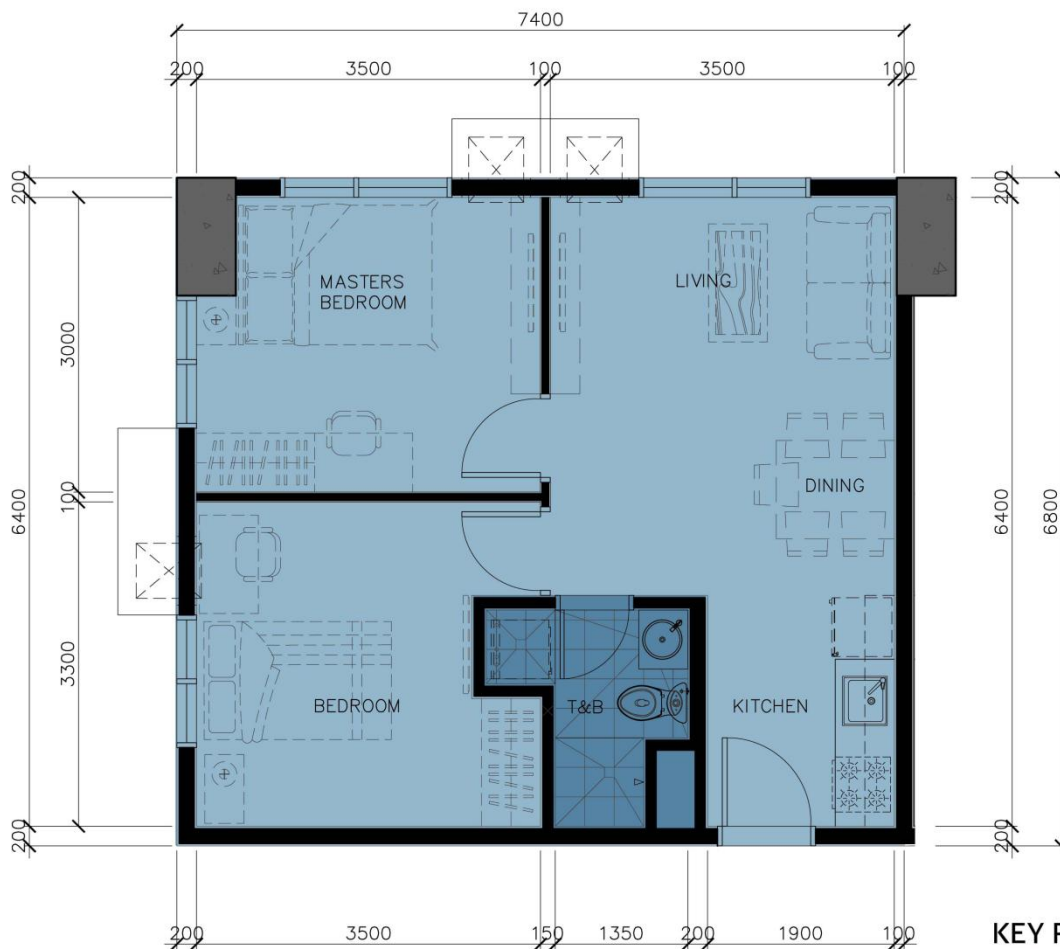
Unit E, R

50.32 SQ.M.

KEY PLAN



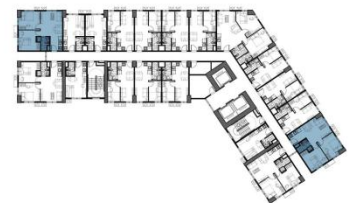
WOODLAND PARK II- UNIT LAYOUTS TYPICAL TWO BEDROOM UNIT



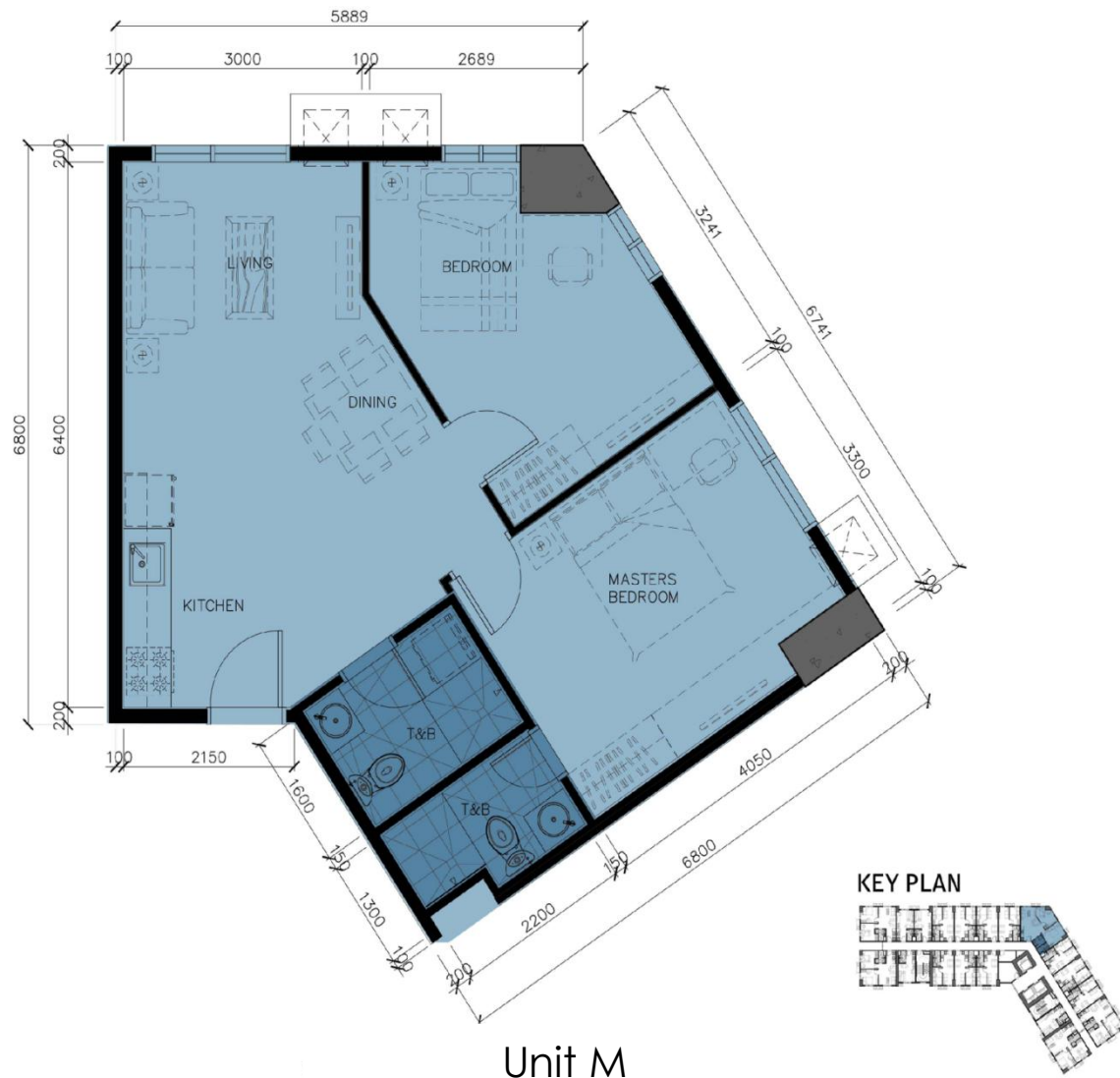
Unit F, Q

50.32 SQ.M.

KEY PLAN



WOODLAND PARK II – UNIT LAYOUTS TYPICAL TWO BEDROOM UNIT



61.14 SQ.M.

DEVELOPMENT FEATURES AND HIGHLIGHTS

- **TWO- BEDROOM, ONE- BEDROOM UNITS AND STUDIO UNITS**

- Ceramic tiles in living and dining areas, kitchen and bedroom/sleeping den
 - Ceramic tiles in toilet and bath
 - Custom-built kitchen cabinets
 - Provision for mechanical ventilation
 - Toilet provision for mechanical ventilation
 - Provision for air-conditioning unit opening for bedroom/sleeping den

- **TYPICAL RESIDENTIAL FEATURES**

- Individual electric and water meter
 - Provision for telephone lines/CATV/ internet per unit
 - Individual Condominium Certificate of Title (CCT)

- **GROUND FLOOR**

- Residential lobby with reception area and lounge
 - High-speed, interior-finished passenger elevators
 - Centralized mailroom per tower
 - Individual mail boxes with keys

- **RECREATIONAL AMENITIES/ FACILITIES**

- Commercial shops at the ground and second levels in Tower 1 and 2
 - Lap pool, wading pool, and paved sunbathing deck
 - Children's playground
 - Changing rooms with showers
 - Day care center, fitness gym and outdoor fitness station
 - Jogging paths

- **BUILDING FACILITIES/ SERVICES**

- Automatic fire sprinkler system for all units
 - Overhead water tank and underground cistern for ample water supply
 - Standby power generator for selected common areas
 - Building administration/security office

- **MULTI- LEVEL PARKING**

- Two- level podium parking